



FORTUNE & COATES

The People's Estate Agent



18 Charters Cross, Harlow, CM18 6UG

Guide price £270,000

Guide Price: £270,000 - £280,000

Fortune and Coates are pleased to offer for sale this well presented two bedroom bungalow situated in the popular location of Charters Cross, Harlow.

This home has a lot to offer with most rooms overlooking the rear garden, laid out over one level, the property comprises a spacious entrance hallway which has storage and leads to the dining room/study with double doors that lead to the rear garden, bright and spacious lounge with steps up to the open plan kitchen with a range of wall and base units and some integrated appliances. Both bedrooms are double in size and there is further storage and a family bathroom. Externally, the rear garden is low maintenance and offers a large patio area, perfect for entertaining.

Charters Cross is close to local junior and Senior schools, Staple Tye Shopping precinct with a supermarket and local shops. Harlow Town centre is easy to reach and offers an array of amenities such as restaurants, shops and supermarkets, leisure facilities and Harlow Town Train station with direct links to London.

Lounge 14'0" x 14'7" (4.29 x 4.47)

Kitchen 14'0" x 9'2" (4.29 x 2.8)

Bedroom 9'1" x 13'4" (2.77 x 4.07)

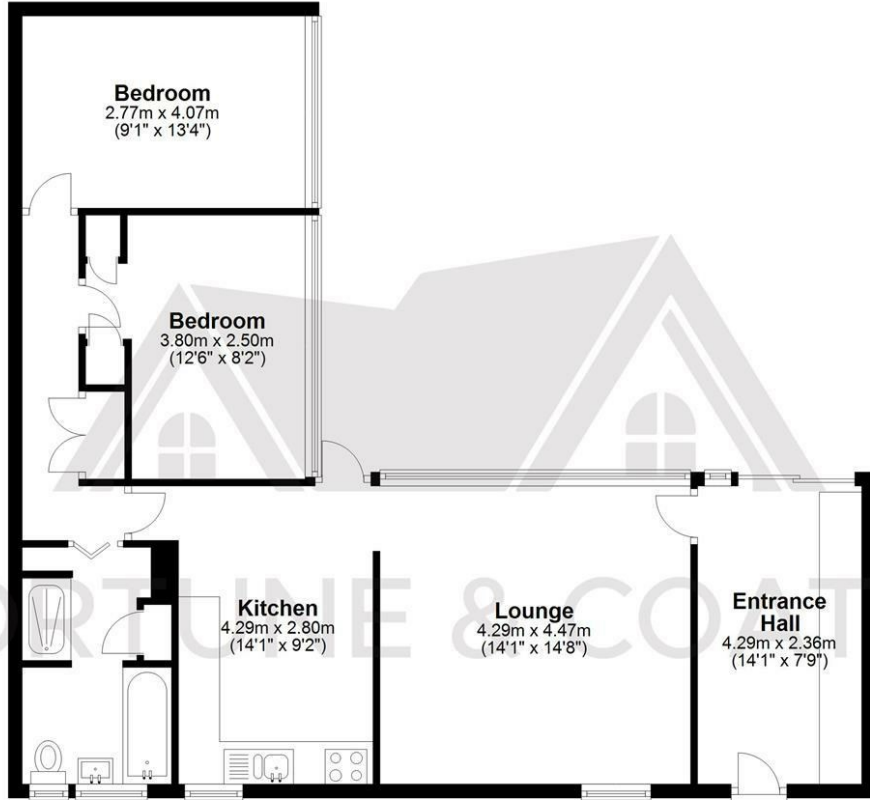
Bedroom 12'5" x 8'2" (3.8 x 2.5)

AGENT NOTE: The information provided about this property does not constitute or form part of an offer or contract, nor may it be regarded as representations. All interested parties must verify accuracy and your solicitor must verify tenure/lease information, fixtures & fittings and, where the property has been extended/converted, planning/building regulation consents. All dimensions are approximate and quoted for guidance only as are floor plans which are not to scale and their accuracy cannot be confirmed. Reference to appliances and/or services does not imply that they are necessarily in working order or fit for the purpose

Floor Plan

Ground Floor

Approx. 79.4 sq. metres (854.6 sq. feet)

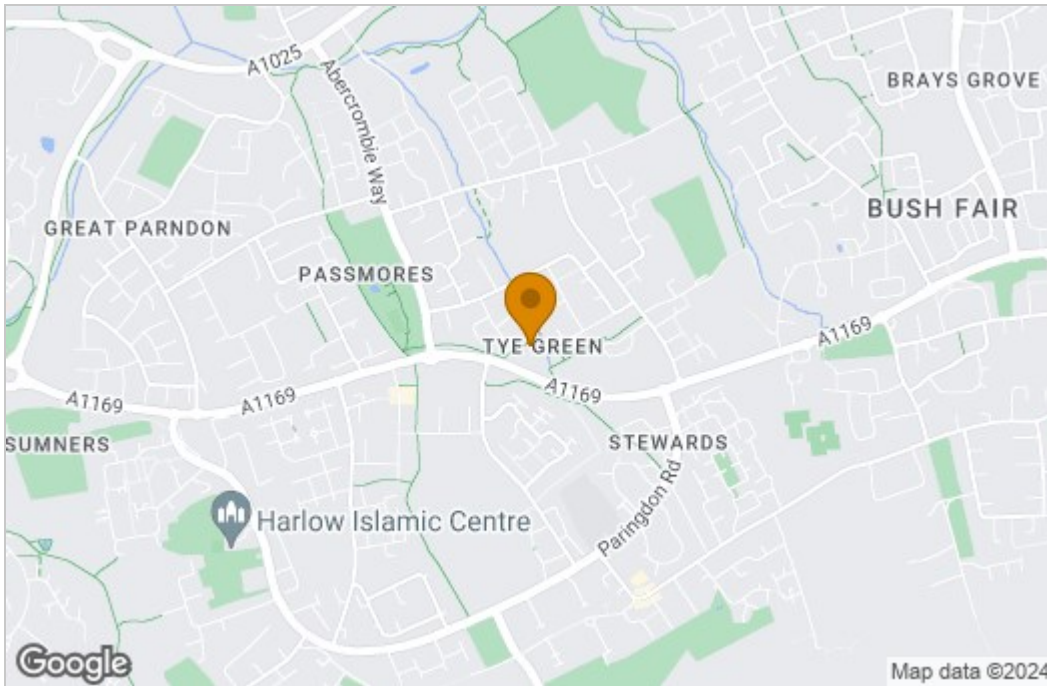


Total area: approx. 79.4 sq. metres (854.6 sq. feet)

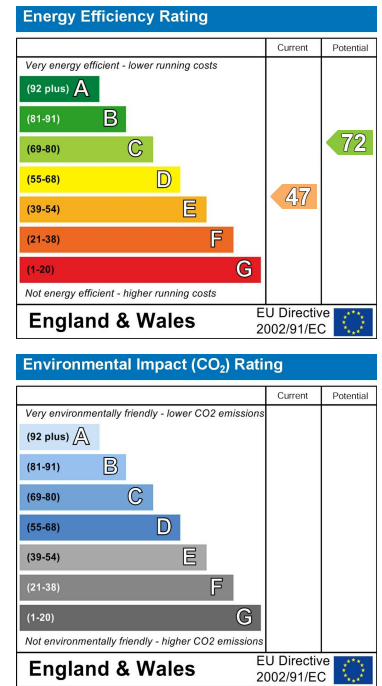
FOR ILLUSTRATIVE PURPOSES ONLY. NOT TO SCALE. Whilst every attempt had been made to ensure the accuracy of the floor plan shown, all measurements, positioning, fixtures, features, fittings and any other data shown are an approximate interpretation for illustrative purposes only and are not to scale. No responsibility is taken for any error, omission, miss-statement or use of data shown.

Property marketing provided by www.fotomarketing.co.uk

Area Map



Energy Efficiency Graph



These particulars, whilst believed to be accurate are set out as a general outline only for guidance and do not constitute any part of an offer or contract. Intending purchasers should not rely on them as statements of representation of fact, but must satisfy themselves by inspection or otherwise as to their accuracy. No person in this firm's employment has the authority to make or give any representation or warranty in respect of the property.