



FORTUNE & COATES

The People's Estate Agent

<https://www.fortuneandcoates.co.uk>



FORTUNE & COATES



29 Myrtle Close, Harlow, CM17 0GA

£172,500

Shared Ownership 75%.

Fortune and Coates are pleased to offer to the market this exceptionally presented one bedroom second floor flat situated in the sought after location of Myrtle Close, Harlow which is on the new development of Gilden Park, Harlow, which is close to Churchgate street and Old Harlow High street with an array of shops, pubs and restaurants, M11 7a Junction, walking distance to Harlow Mill train station with direct links to London, Cambridge and Stansted Airport, within easy reach of Harlow Town, Sawbridgeworth, Bishops Stortford and Epping. The home comprises a secure entry system and stairs to the second floor, entrance hallway, open plan living/dining and modern kitchen with range of wall and base units and some integrated appliances, access to a spacious balcony, double bedroom and a family bathroom. Outside, the home benefits allocated parking for one vehicle. This will make a fabulous first time home and advise an early viewing.

Lounge/Kitchen/Diner 22'7" x 18'8" (6.89 x 5.71)

Bedroom 12'6" x 10'7" (3.82 x 3.23)

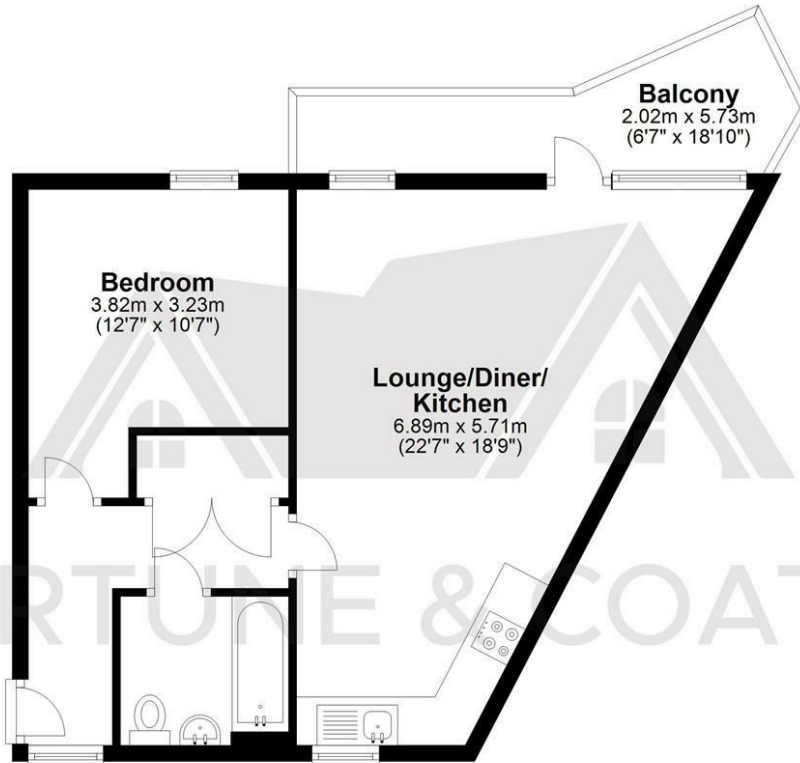
Balcony 6'7" x 18'9" (2.02 x 5.73)

Please note that these particulars do not form part of any offer or contract. All descriptions, photographs and plans are for guidance only and should not be relied upon as statements or representations of fact. All measurements are approximate.

Floor Plan

Apartment

Approx. 49.7 sq. metres (534.8 sq. feet)

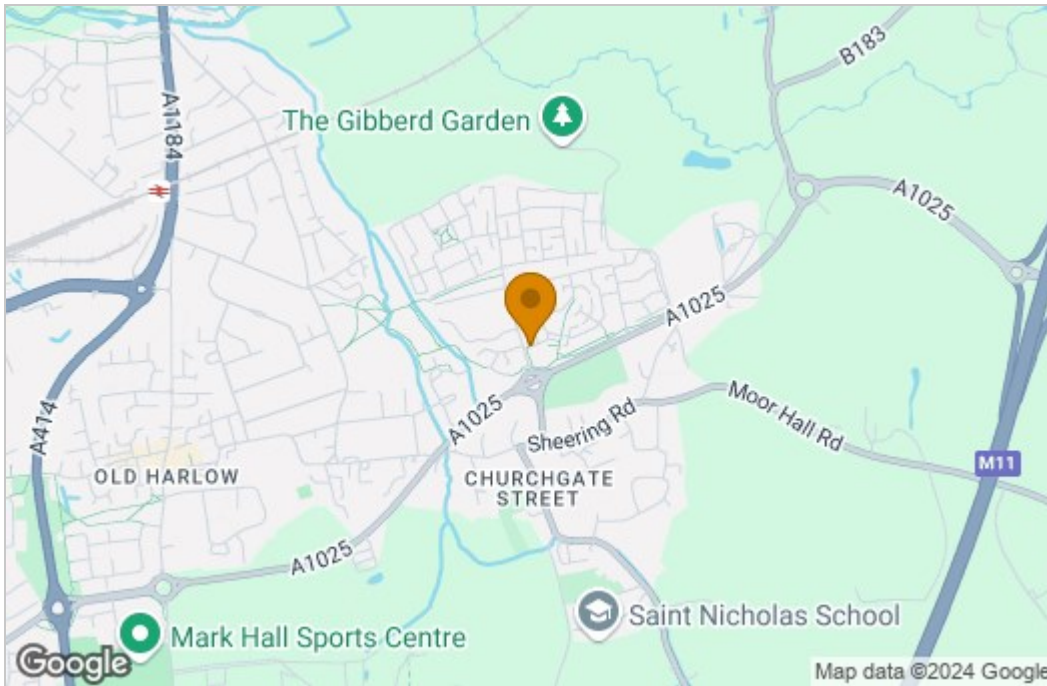


Total area: approx. 49.7 sq. metres (534.8 sq. feet)

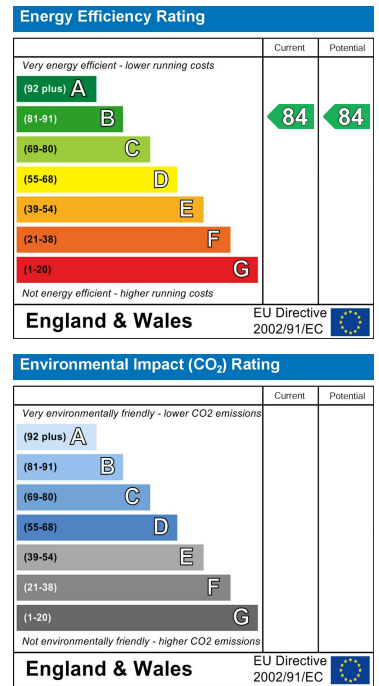
FOR ILLUSTRATIVE PURPOSES ONLY. NOT TO SCALE. Whilst every attempt had been made to ensure the accuracy of the floor plan shown, all measurements, positioning, fixtures, features, fittings and any other data shown are an approximate interpretation for illustrative purposes only and are not to scale. No responsibility is taken for any error, omission, miss-statement or use of data shown.

Property marketing provided by www.fotomarketing.co.uk

Area Map



Energy Efficiency Graph



These particulars, whilst believed to be accurate are set out as a general outline only for guidance and do not constitute any part of an offer or contract. Intending purchasers should not rely on them as statements of representation of fact, but must satisfy themselves by inspection or otherwise as to their accuracy. No person in this firm's employment has the authority to make or give any representation or warranty in respect of the property.