



FORTUNE & COATES

The People's Estate Agent



FORTUNE & COATES



51 Tithelands, Harlow, CM19 5NB

Asking price £350,000

Fortune and Coates are delighted to present to the market this vibrant three bedroom mid-terrace family home situated in the popular location of Tithelands, Harlow which is close to local shops and schools and within close proximity to the Crooked Mile which provides great access to London. The property is situated in a cul-de-sac and comprises entrance hall, cloakroom/W.C, large kitchen/dining room with range of wall and base units, some integrated appliances, and a bright and airy lounge with doors that lead to the rear garden. Upstairs boasts three well proportioned bedrooms and a family shower room. Outside, the rear garden is west facing and low maintenance with a decked area for entertaining, and to the front is a garage complete with power and a block paved driveway for two vehicles. This is a beautiful property and would be a fabulous family home.

Lounge 20'6" x 10'0" (6.25 x 3.05)

Kitchen 14'4" x 13'5" (4.37 x 4.09)

Downstairs Cloakroom/W.C

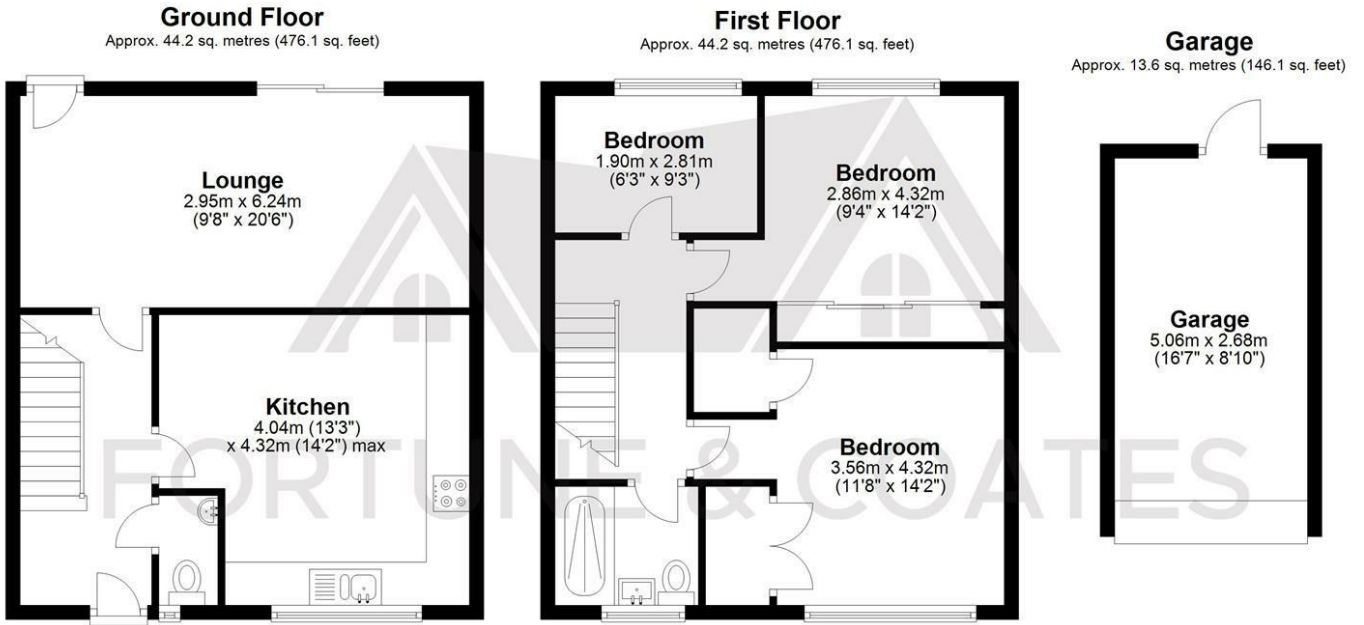
Bedroom 12'0" x 10'11" (3.66 x 3.35)

Bedroom 10'9" x 9'4" (3.3 x 2.87)

Bedroom 9'10" x 6'5" (3.0 x 1.96)

Please note that these particulars do not form part of any offer or contract. All descriptions, photographs and plans are for guidance only and should not be relied upon as statements or representations of fact. All measurements are approximate.

Floor Plan

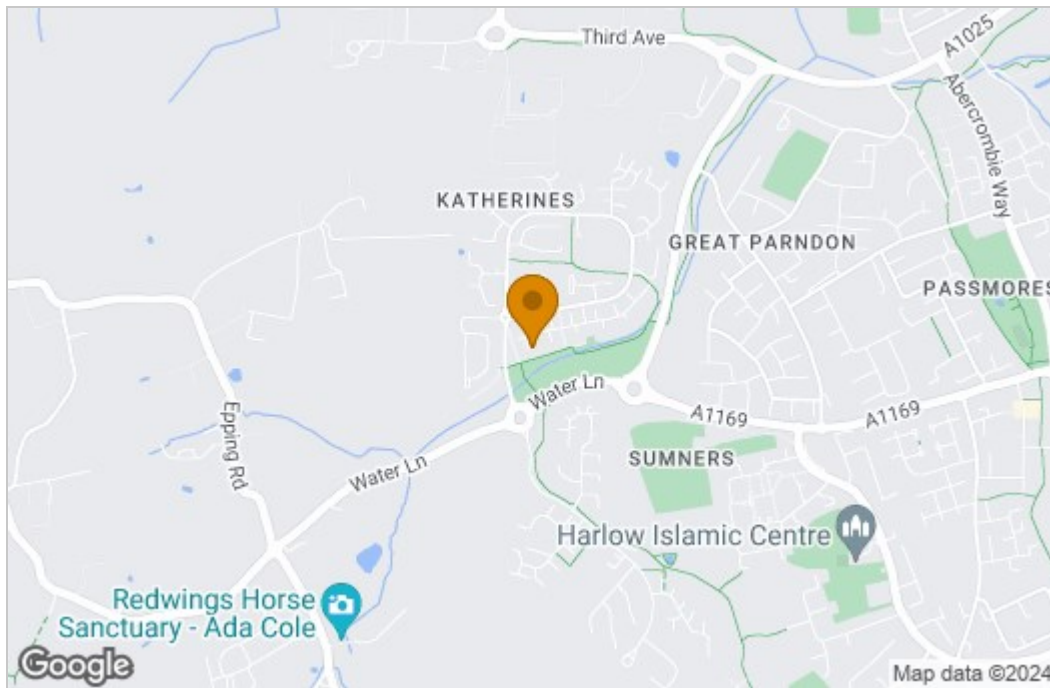


Total area: approx. 102.0 sq. metres (1098.3 sq. feet)

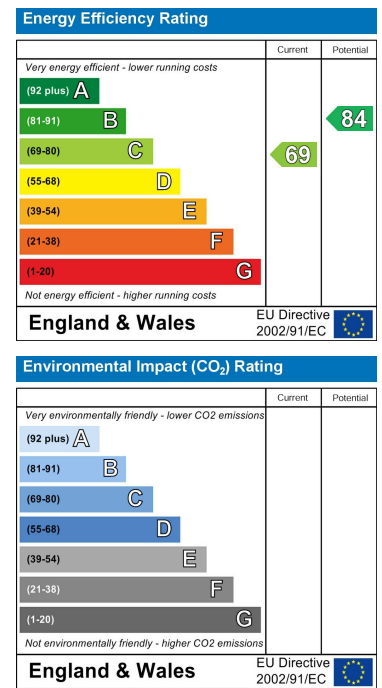
FOR ILLUSTRATIVE PURPOSES ONLY, NOT TO SCALE. Whilst every attempt had been made to ensure the accuracy of the floor plan shown, all measurements, positioning, fixtures, features, fittings and any other data shown are an approximate interpretation for illustrative purposes only and are not to scale. No responsibility is taken for any error, omission, miss-statement or use of data shown.

Property marketing provided by www.fotomarketing.co.uk

Area Map



Energy Efficiency Graph



These particulars, whilst believed to be accurate are set out as a general outline only for guidance and do not constitute any part of an offer or contract. Intending purchasers should not rely on them as statements of representation of fact, but must satisfy themselves by inspection or otherwise as to their accuracy. No person in this firm's employment has the authority to make or give any representation or warranty in respect of the property.