



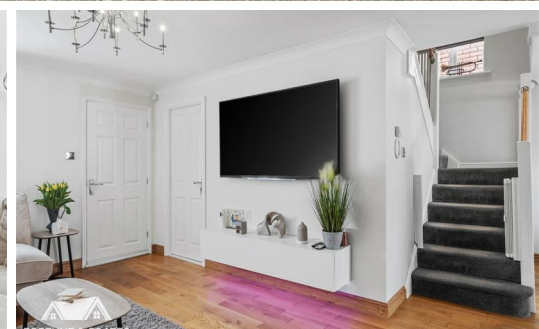
**FORTUNE & COATES**

The People's Estate Agent

<https://www.fortuneandcoates.co.uk>



FORTUNE & COATES



**35 Elwood, Harlow, CM17 9QJ**

**£525,000**

Fortune and Coates are delighted to offer to the market this immaculately presented four bedroom detached family home situated in the sought after location of Elwood, Church Langley, Harlow which is close to local junior and senior schools, supermarkets, amenities and within easy reach of Harlow Town and Harlow Mill Train stations and the M11. The property comprises front door that opens into the bright and spacious lounge with feature fireplace and lots of natural light, dining room with patio doors that lead to the rear garden, modern fitted kitchen with range of wall and base units, some integrated appliances and stylish metro tiles. The garage has been tastefully converted into a fourth bedroom and boasts lots of space. Upstairs, the three bedrooms are of a generous size with bedrooms one and two having a "Jack and Jill" shower room in addition to a luxury family bathroom. Outside, the rear garden is low maintenance with artificial grass and decked area and has a fabulous summer house for entertaining. To the front is blocked paved and has off street parking for two vehicles.

Lounge 15'5" x 11'1" (4.71 x 3.40)

Dining Room 13'5" x 7'8" (4.11 x 2.34)

Kitchen 8'0" (max) x 11'1" (2.45 (max) x 3.4 )

Bedroom (Downstairs) 16'7" x 7'8" (5.07 x 2.34)

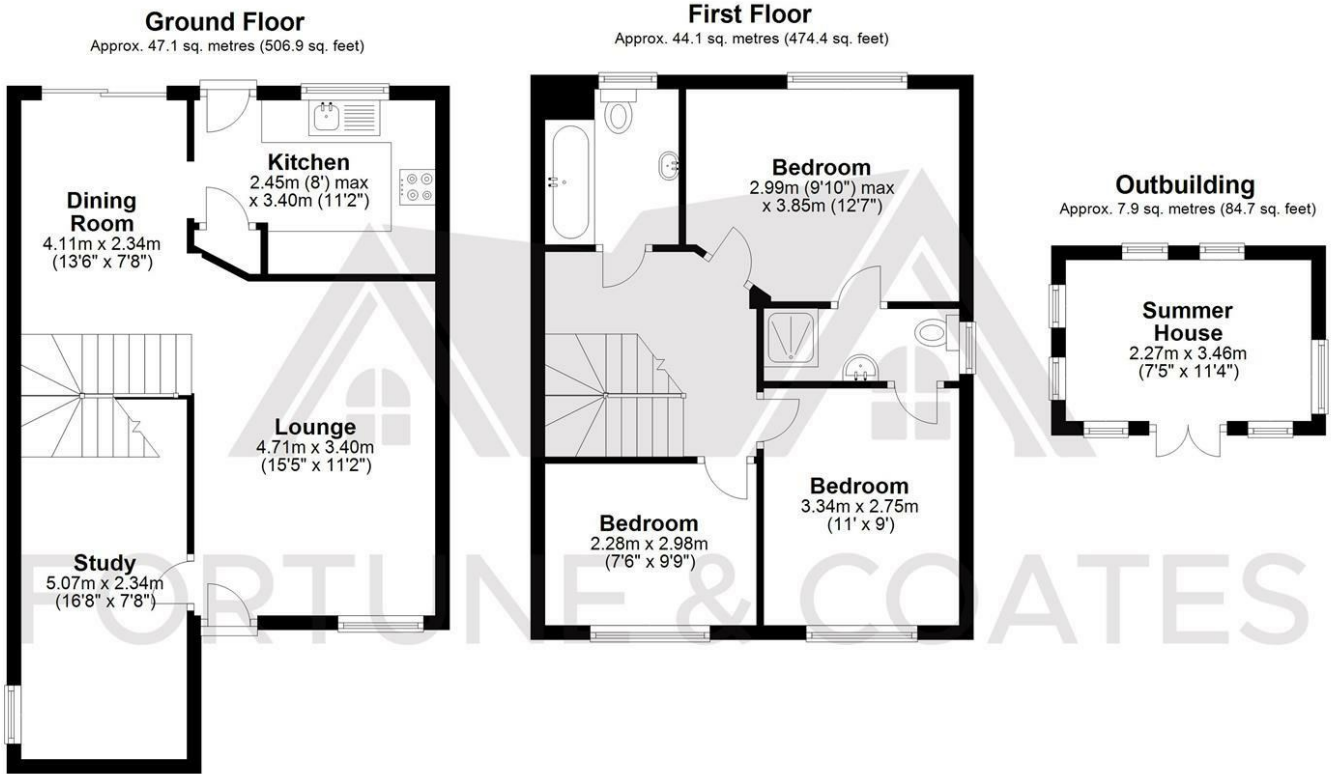
Bedroom 9'9" max) x 12'7" (2.99 max) x 3.85)

Bedroom 10'11" x 9'0" (3.34 x 2.75)

Bedroom 7'5" x 9'9" (2.28 x 2.98)

Summer House 7'5" x 11'4" (2.27 x 3.46)

## Floor Plan



Total area: approx. 99.0 sq. metres (1066.0 sq. feet)

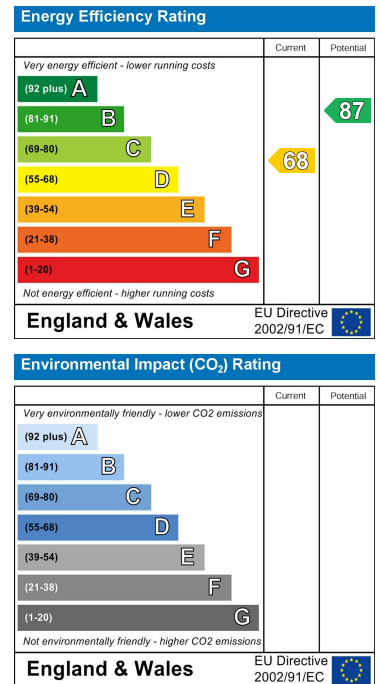
FOR ILLUSTRATIVE PURPOSES ONLY. NOT TO SCALE. Whilst every attempt had been made to ensure the accuracy of the floor plan shown, all measurements, positioning, fixtures, features, fittings and any other data shown are an approximate interpretation for illustrative purposes only and are not to scale. No responsibility is taken for any error, omission, miss-statement or use of data shown.

Property marketing provided by [www.fotomarketing.co.uk](http://www.fotomarketing.co.uk)  
Plan produced using PlanUp.

## Area Map



## Energy Efficiency Graph



These particulars, whilst believed to be accurate are set out as a general outline only for guidance and do not constitute any part of an offer or contract. Intending purchasers should not rely on them as statements of representation of fact, but must satisfy themselves by inspection or otherwise as to their accuracy. No person in this firm's employment has the authority to make or give any representation or warranty in respect of the property.