



FORTUNE & COATES

The People's Estate Agent

<https://www.fortuneandcoates.co.uk>



9 Eve Drive, Harlow, CM18 7FJ

Guide price £380,000

Guide Price £380,000-£400,000. Situated in this private development, we present this three bedroom mid terrace house in Eve Drive. This recently built home is modern throughout, making this a perfect first time buy or family home. To the ground floor, entering via the spacious hall, you are offered a downstairs W.C, utility cupboard, spacious open-plan lounge/diner and fitted kitchen. To the first floor, this family home comprises three well presented bedrooms and a family bathroom with a three piece suite. Externally, you have an ideal rear garden with the perfect ratio of lawn to patio area, as well as gated rear access. To the front of the property, you have allocated parking spaces for two cars. This also falls in a great catchment area for both primary and secondary schools, as well as being just a short distance to all local amenities.

Entrance Hall

Utility Room

WC 6'6" x 3'11" (2m x 1.2m)

Kitchen 9'4 x 8'2 (2.84m x 2.49m)

Lounge/Diner 19'0" x 11'5" (5.8m x 3.5m)

Landing

Bedroom One 13'4 x 8'9 (4.06m x 2.67m)

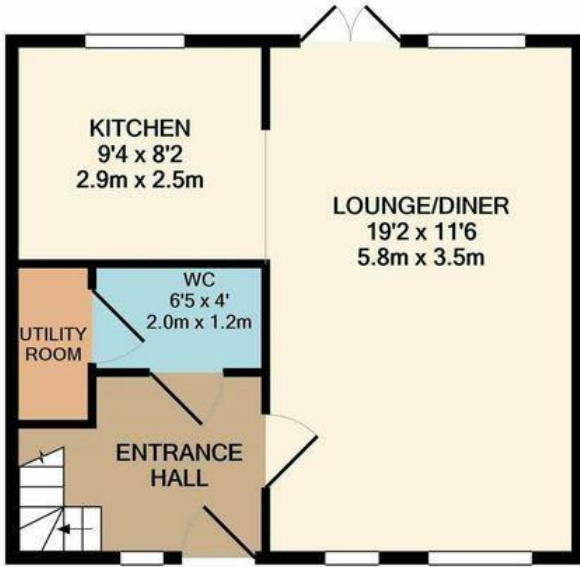
Bedroom Two 10'2" x 9'6" (3.1m x 2.9m)

Bedroom Three 7'6" x 6'10" (2.3m x 2.1m)

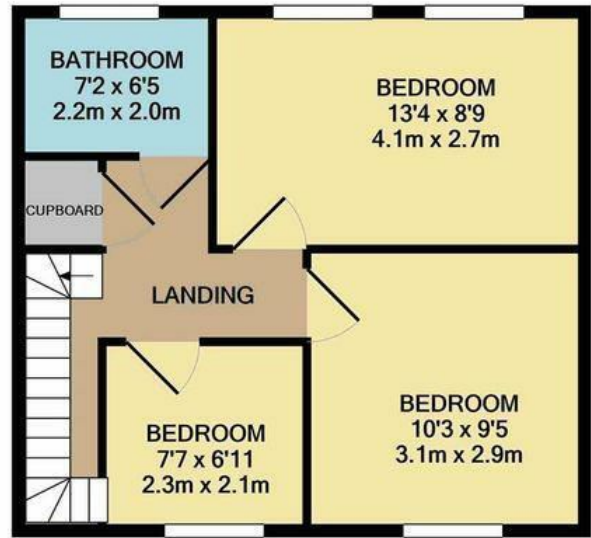
Bathroom 7'2" x 6'6" (2.2m x 2.0m)

Please note that these particulars do not form part of any offer or contract. All descriptions, photographs and plans are for guidance only and should not be relied upon as statements or representations of fact. All measurements are approximate.

Floor Plan



GROUND FLOOR
APPROX. FLOOR
AREA 397 SQ.FT.
(36.9 SQ.M.)

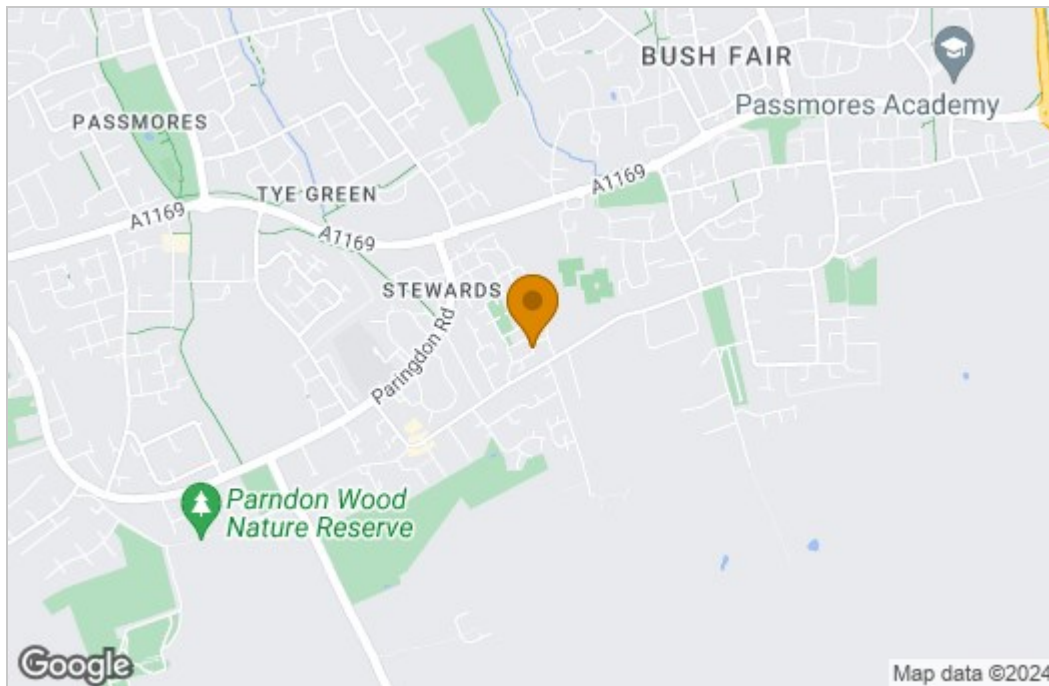


1ST FLOOR
APPROX. FLOOR
AREA 398 SQ.FT.
(37.0 SQ.M.)

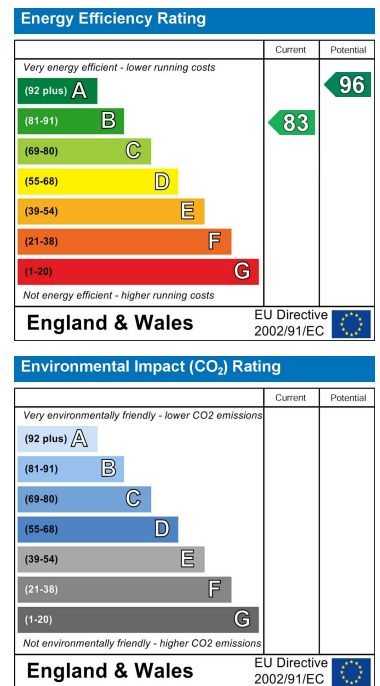
REYLANDJOHNSON/ED
TOTAL APPROX. FLOOR AREA 796 SQ.FT. (73.9 SQ.M.)

Whilst every attempt has been made to ensure the accuracy of the floor plan contained here, measurements of doors, windows, rooms and any other items are approximate and no responsibility is taken for any error, omission, or mis-statement. This plan is for illustrative purposes only and should be used as such by any prospective purchaser. The services, systems and appliances shown have not been tested and no guarantee as to their operability or efficiency can be given
Made with Metropix ©2021

Area Map



Energy Efficiency Graph



These particulars, whilst believed to be accurate are set out as a general outline only for guidance and do not constitute any part of an offer or contract. Intending purchasers should not rely on them as statements of representation of fact, but must satisfy themselves by inspection or otherwise as to their accuracy. No person in this firm's employment has the authority to make or give any representation or warranty in respect of the property.