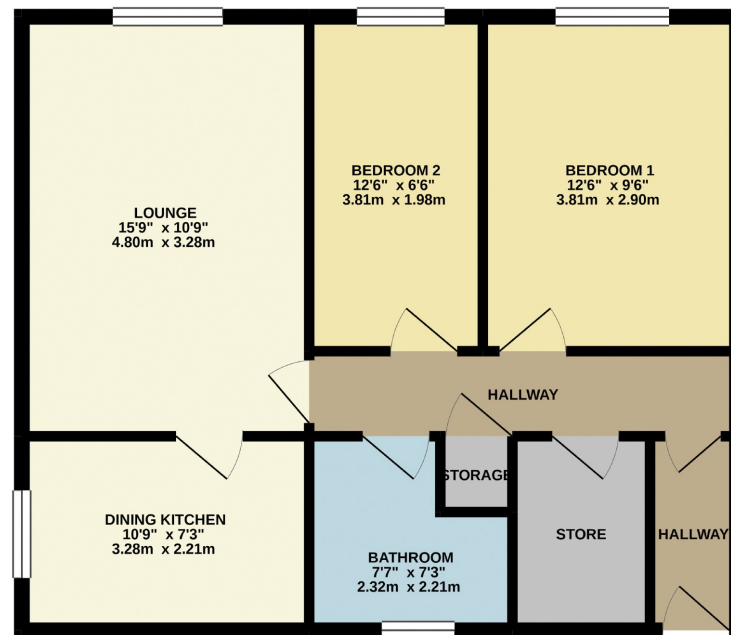


Floor Plan

GROUND FLOOR
615 sq.ft. (57.2 sq.m.) approx.



TOTAL FLOOR AREA - 615 sq.ft. (57.2 sq.m.) approx.

Energy Performance Certificates



£130,000

Flat 11, Colebrooke Meadows, Knaresborough, North
Yorkshire, HG5 0PT

2 Bedroom Apartment

A well presented two bedroomed first floor apartment with allocated parking located close to amenities in the popular market town of Knaresborough.

Directions

Council Tax Band

Tenure Leasehold



Agents Notes

We do not set out to avoid our civil and criminal liabilities by using clever use of word or photography however it is not always possible for us to guarantee that everything in our sales material is accurate. We strongly recommend that prospective purchasers seek their own professional advice. No responsibility can be accepted for any expenses incurred by intending Purchasers. We do not check or guarantee the condition of appliances, services or equipment. Equally any verbal statement from our staff forms no point of a contract. If you require written confirmation on any point we will gladly assist.

HOPKINSONS
ESTATE AGENTS

16 Princes Street, Harrogate, HG1 1NH
Telephone: 01423 501 201
info@hopkinsons.net

Description

A well presented two bedroomed first floor apartment with allocated parking located close to amenities in the popular market town of Knaresborough.

No chain involved.

The smart property which offers an ideal investment opportunity briefly comprises secure ground floor entrance staircase to 1st floor private entrance door reception hall with useful deep storage cupboard. There is a lounge with a pleasant outlook.

Modern dining kitchen with far reaching views. There are two bedrooms and a modern updated house bathroom with shower.

Outside there are commonly maintained gardens and an allocated private parking space.

Knaresborough is a popular market town with good road and rail connections to Harrogate York and London. There is a bus stop nearby that provides access into the town for daily needs.

