

Eastcotts House

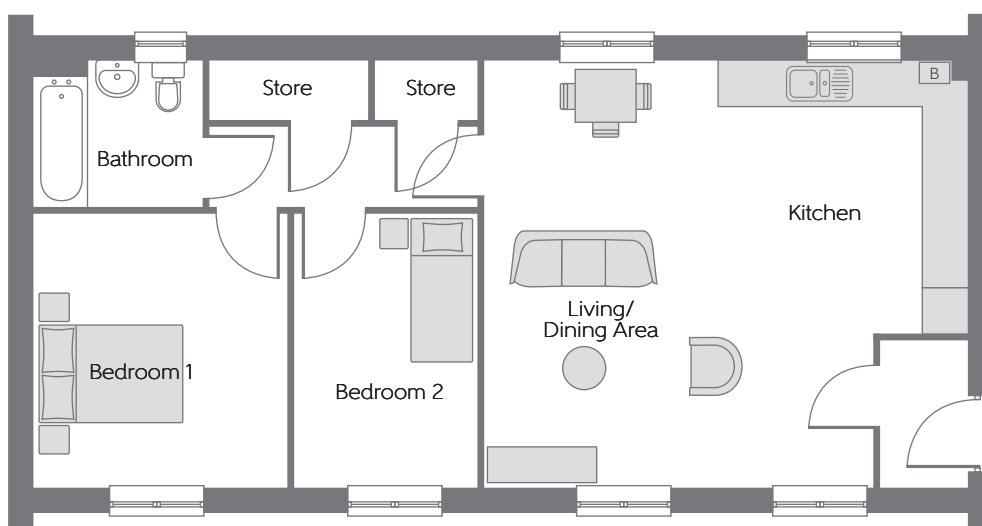
Two bedroom apartments and duplex apartment
Plots 835, 838, 841 and 842



Bellway Homes Limited (Northern Home Counties)
Building 5, Caldecotte Lake Drive, Caldecotte,
Milton Keynes, Buckinghamshire MK7 8LE

Telephone: 01908 364 200
www.bellway.co.uk

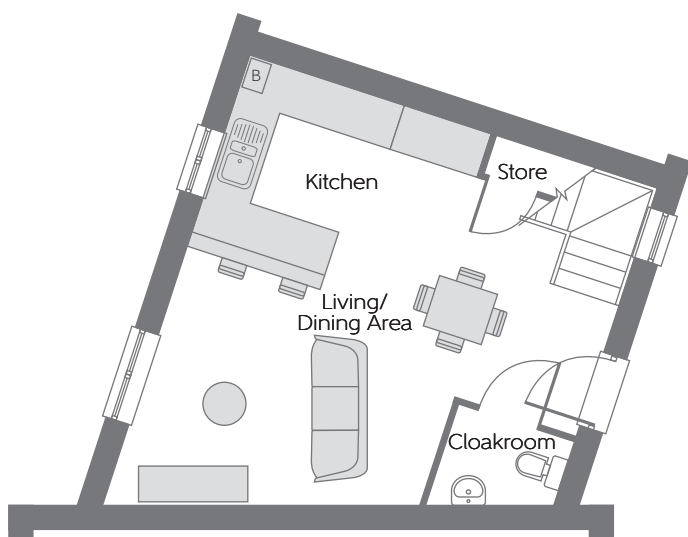
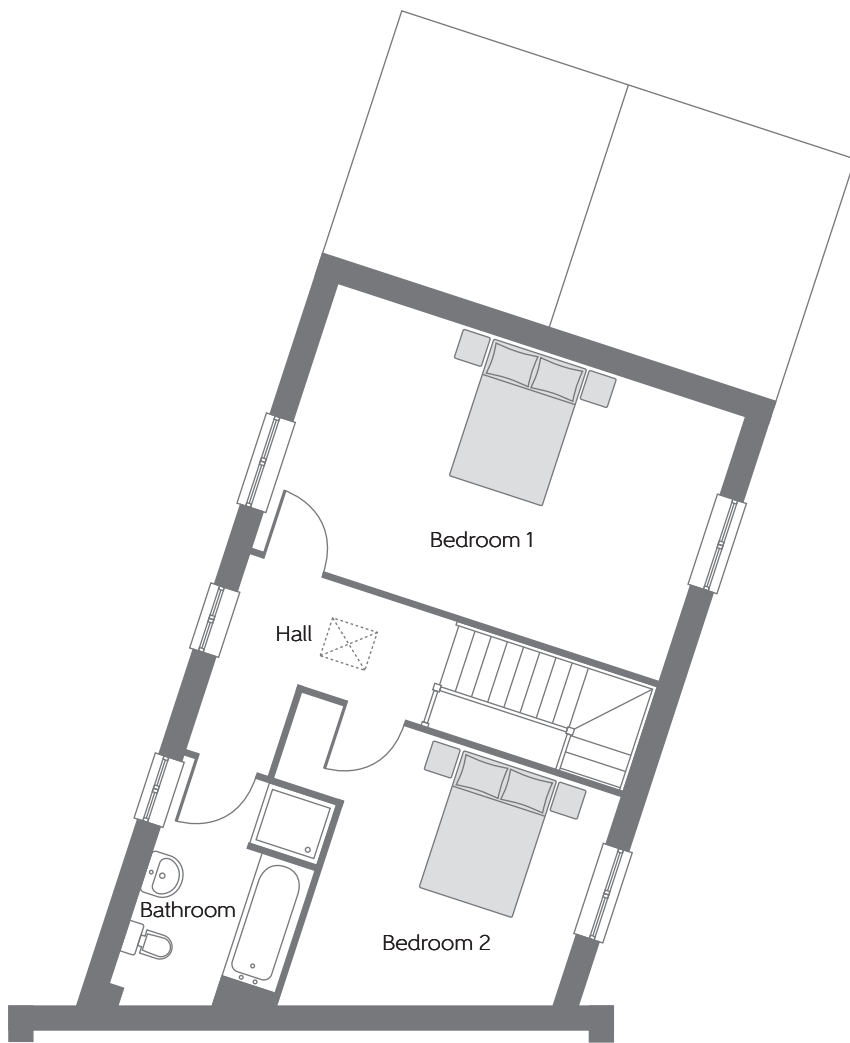
Bellway



Plots 838, 841 & 842*

Kitchen	3.395m x 3.602m (max) (max)	11'2" x 11'10" (max) (max)
Dining Area	5.640m x 5.140m (max) (max)	18'6" x 16'10" (max) (max)
Bedroom 1	3.620m x 3.340m	11'1" x 11'0"
Bedroom 2	3.620m x 2.416m	11'1" x 7'11"
Bathroom	2.233m x 1.925m (max) (max)	7'4" x 6'4" (max) (max)

*Plot 842 is handed

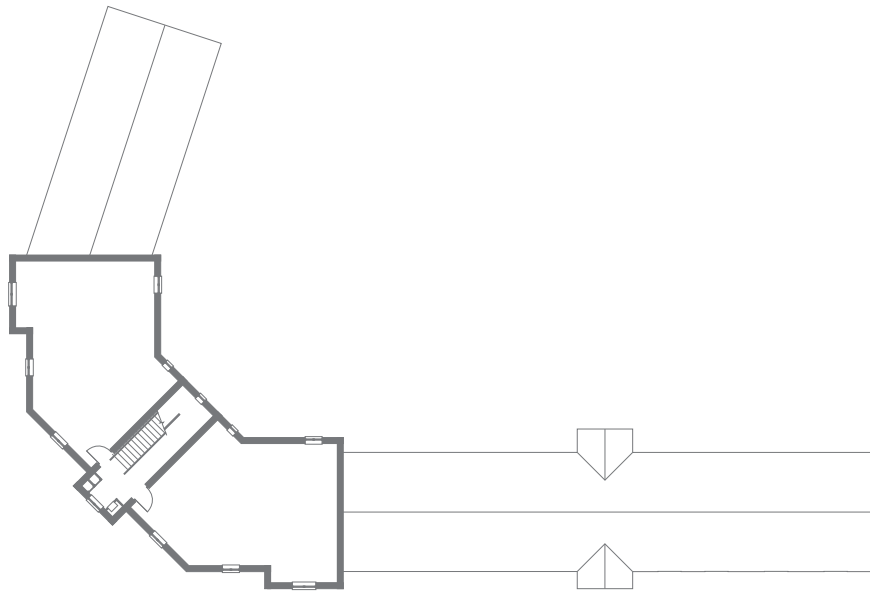


Plot 835

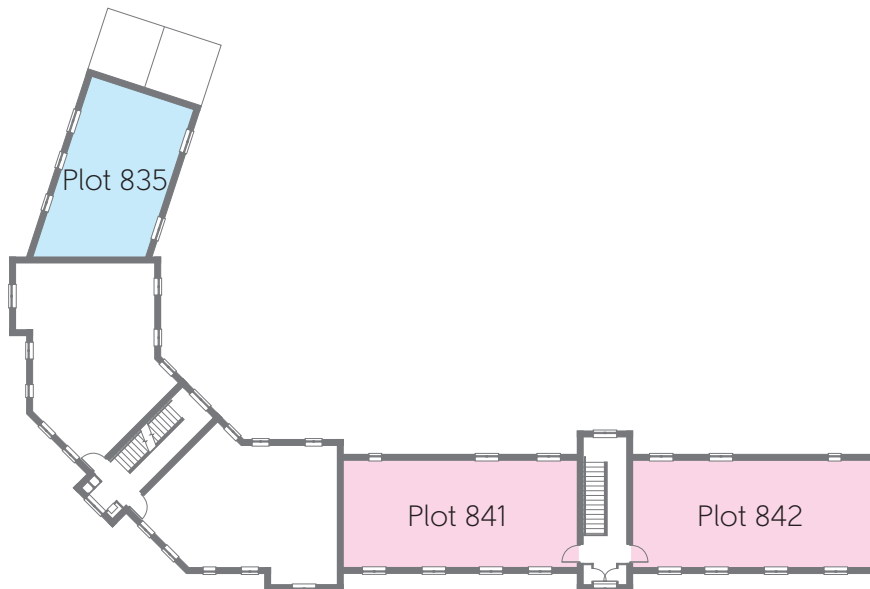
Living/ Dining Room	5.638m x 5.073m	18'6" x 16'8"
Kitchen	3.540m x 2.770m (max) (max)	11'7" x 9'1" (max) (max)
Bedroom 1	5.640m x 3.582m (max) (max)	18'6" x 11'9" (max) (max)
Bedroom 2	4.407m x 4.405m (max) (max)	14'6" x 14'5" (max) (max)
Bathroom	3.044m x 2.102m (max) (max)	10'0" x 6'11" (max) (max)

B Boiler

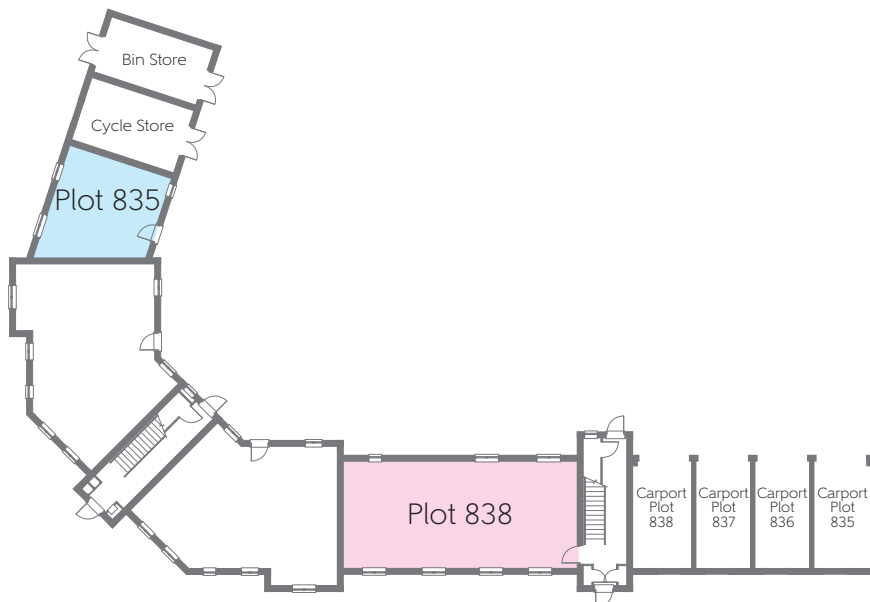
Some items shown in this key may be subject to change, and positions could vary from those indicated on this floorplan. Please refer to Sales Advisor for details of your selected plot. Computer generated image shown overleaf. External finishes, landscaping and configuration may vary from plot to plot. Please refer to Sales Advisor for further details. All dimensions are approximate and should not be used for carpet sizes, appliance spaces, or furniture. Furniture not to scale and all positions are indicative. Wardrobes are shown to suggest position only, and are not included as standard unless otherwise stated. We operate a policy of continuous improvement and individual features such as kitchen and bathroom layouts, doors, windows, garages and elevational treatments may vary from time to time. Consequently these particulars should be treated as general guidance only and do not constitute a contract, part of a contract or a warranty. 11/20 EASTCOTTS PLACE



Second Floor



First Floor



Ground Floor