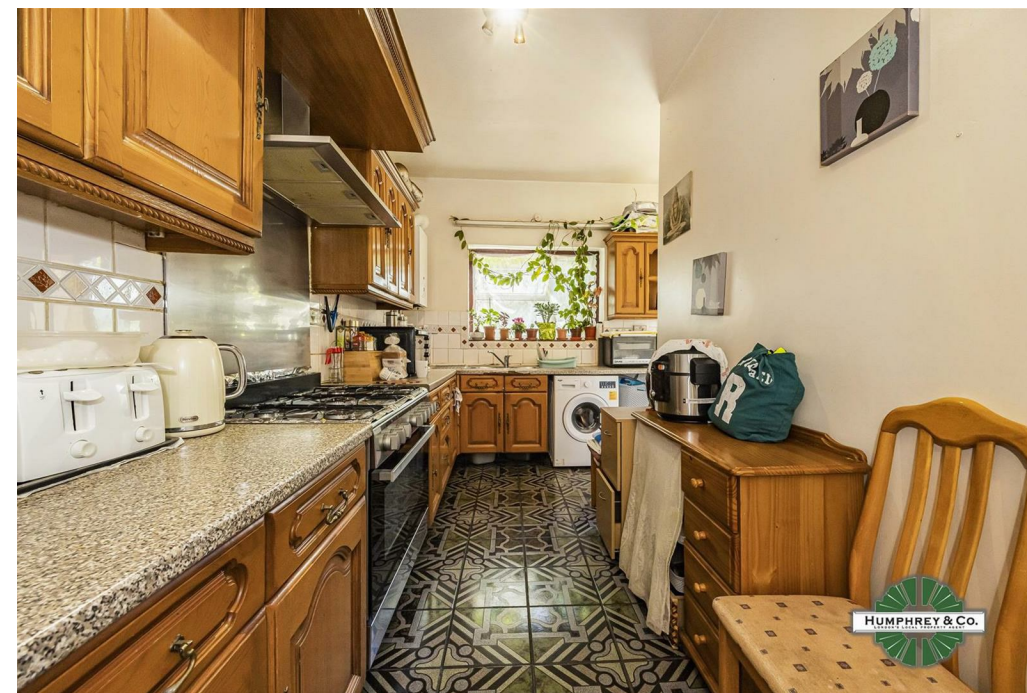


Exeter Road

Approximate Gross Internal Area
 Ground Floor = 65.9 sq m / 709 sq ft
 First Floor = 40.6 sq m / 438 sq ft
 Total = 106.5 sq m / 1147 sq ft

This plan is for layout guidance only. Not drawn to scale unless stated. Windows and door openings are approximate. Whilst every care is taken in the preparation of this plan, please check all dimensions, shapes and compass bearings before making any decisions reliant upon them.

powered by:
THE360IMAGE
www.the360image.co.uk



Directions

Contact

125 Hoe Street
 London
 E17 4RX

E: sales@hcolondon.com

T: 02085 210 755

hcolondon.com



**3 Bed
 House - End Terrace
 located in**



2 Exeter Road

London E17 7QJ

Asking price £725,000

Freehold



**** Chain Free Semi Detached Victorian Home****

Humphrey & Co Estates are pleased to present this three bedroom semi-detached Victorian home.

This property comprise from ample character, entrance hall, good size reception room, separate spacious kitchen, separate dining room. Upstairs there is three good size three bedrooms with family bathroom. Other benefit include spacious private garden, on street parking, double glazing and Gas central heating.

- Semi Detached Victorian Home
- Freehold
- Chain Free
- Three Bedroom
- Spacious Reception Room
- Dining Room

