



Indecon Square, Isle Of Dogs, LONDON, E14 9DR

3 bedroom apartment for sale - Guide price £690,000

Indecon Square, Isle Of Dogs, LONDON, E14 9DR

Guide price £690,000 - 3 bedroom apartment for sale
www.humphreyandcoestates.com

Description:

Guide Price ?690,000 - ?720,000

Remaining Years Left on the Lease: 989 Years.

Service Charge: ?4367.14 per annum.

Ground Rent: ?500.00 per annum.

London's Local Property Agent, Humphrey & Co Estates are proud to introduce to the Sales market this great investment opportunity. Offering a fantastic E14 location in the heart of the Docklands. Occupying the 3rd floor position within Indecon Square, a sought after portered development situated less than a 5 minute walk from South Quay DLR station, the property has been spaciouly designed to a premium specification and features wood-strip flooring to the hallway and reception, granite kitchen worktops, fitted bedroom wardrobes and marble-finished bathroom suites. The accommodation includes a spacious lounge featuring full height windows which open onto an expansive sun terrace and corner-balcony, secluded high-spec kitchen benefitting integrated appliances and excellent dining and entertainment space, master-bedroom benefitting use of a luxury en-suite shower room. There is two further good-sized bedroom and a deluxe three piece bathroom suite.

Video Tour: <https://www.youtube.com/watch?v=Ki8deZNdlTM>

Please call our friendly sales team to secure a viewing.

New Home: Non New Home

Humphrey & Co Estates

125 Hoe Street

London

E17 4RX

info@humphreyandcoestates.com

2080123070

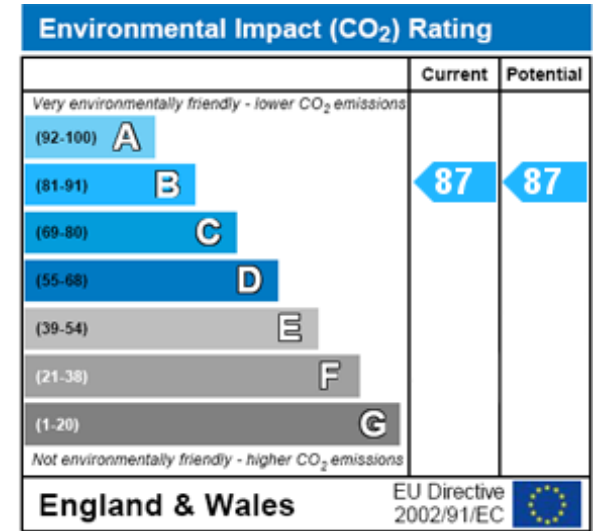
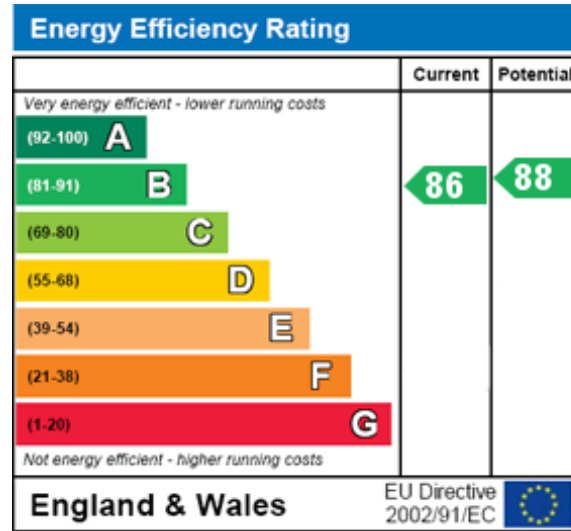


Indecon Square, Isle Of Dogs, LONDON, E14 9DR

Guide price £690,000 - 3 bedroom apartment for sale
www.humphreyandcoestates.com

Features:

Three Bed Flat In Indecon Square
One Bathroom and One Shower Room
Three Double Bedrooms
Great Investment Opportunity
Vacant Possession
Guide Price ?690,000 - ?720,000
Amazing Location
Chain Free



Humphrey & Co Estates

125 Hoe Street

London

E17 4RX

info@humphreyandcoestates.com

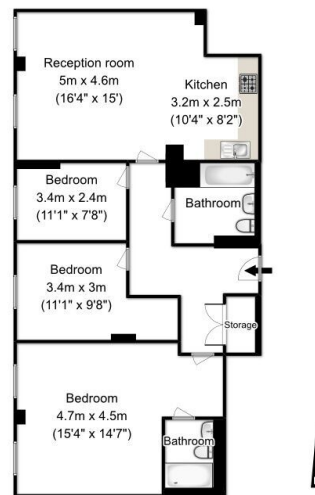
2080123070



Indecon Square, Isle Of Dogs, LONDON, E14 9DR

Guide price £690,000 - 3 bedroom apartment for sale

www.humphreyandcoestates.com



APPROX. GROSS INTERNAL FLOOR AREA 1153.8 SQ FT | 107.2 SQ M
Floorplans are for identification and guideline purposes only, not to scale.
Compliant with RICS code of measuring practice.

Humphrey & Co Estates

125 Hoe Street

London

E17 4RX

info@humphreyandcoestates.com

2080123070



Indecon Square, Isle Of Dogs, LONDON, E14 9DR

Guide price £690,000 - 3 bedroom apartment for sale

www.humphreyandcoestates.com



Humphrey & Co Estates

125 Hoe Street

London

E17 4RX

info@humphreyandcoestates.com

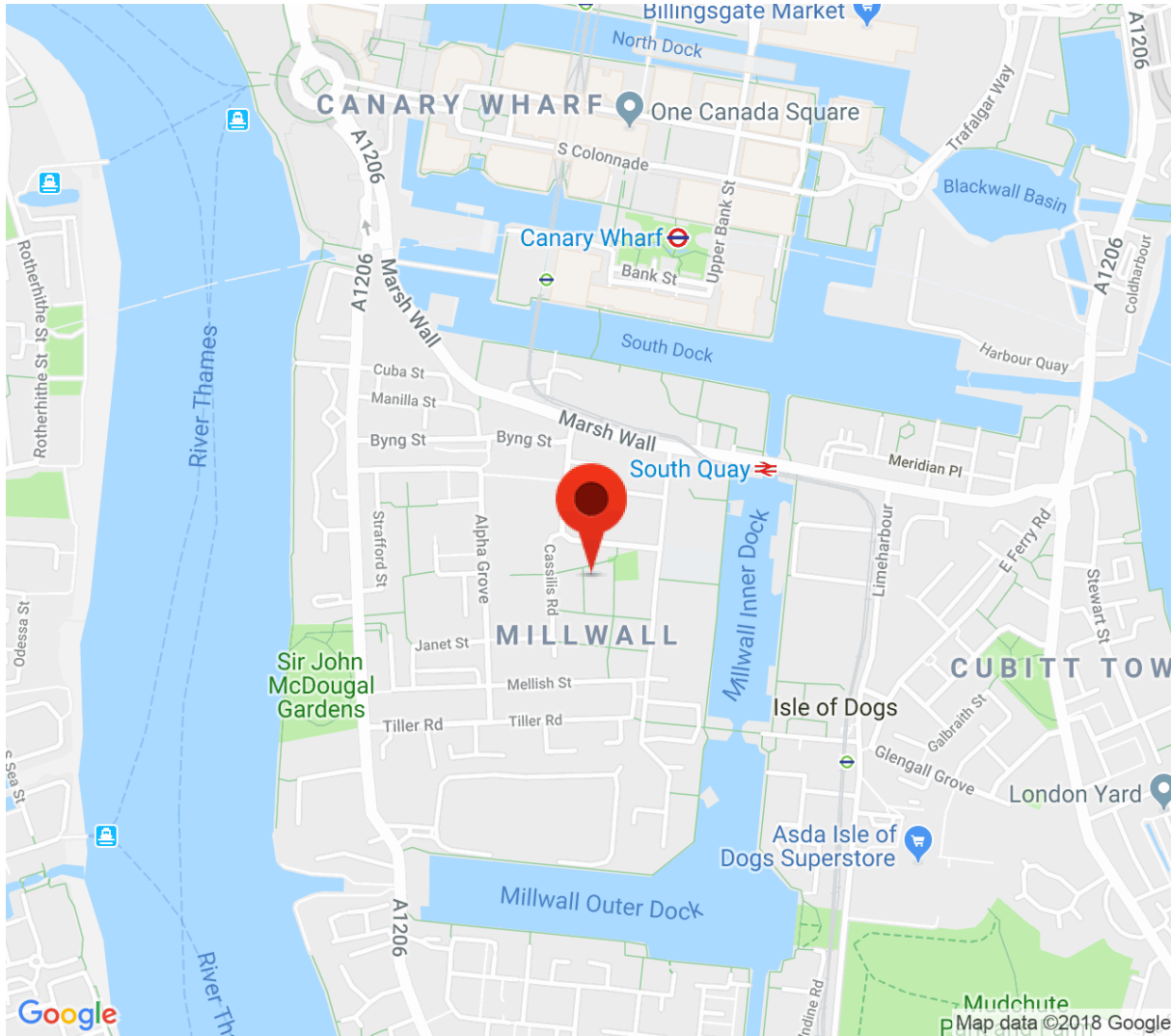
2080123070



Indecon Square, Isle Of Dogs, LONDON, E14 9DR

Guide price £690,000 - 3 bedroom apartment for sale

www.humphreyandcoestates.com



Category :Property for sale



Use this agent code below

SYDYMU

(or)



Humphrey & Co Estates

125 Hoe Street

London

E17 4RX

info@humphreyandcoestates.com

2080123070

