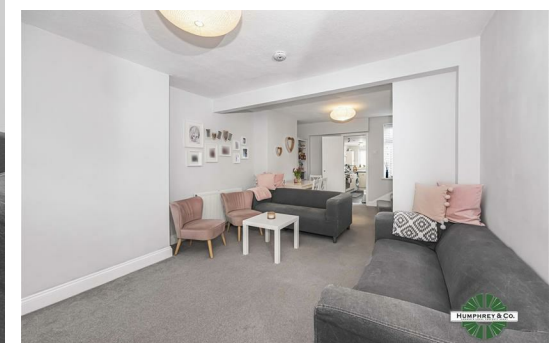


## Lower Road

Approximate Gross Internal Area  
Ground Floor = 34.0 sq m / 366 sq ft  
First Floor = 23.9 sq m / 258 sq ft  
Total = 57.9 sq m / 6.24 sq ft

This plan is for layout guidance only. Not drawn to scale unless stated. Windows and door openings are approximate. Whilst every care is taken in the preparation of this plan, please check all dimensions, shapes and compass bearings before making any decisions reliant upon them.

powered by:  
**THE360IMAGE**  
www.the360image.co.uk



## Directions

## Contact

125 Hoe Street  
London  
E17 4RX

E: [lettings@hcolondon.com](mailto:lettings@hcolondon.com)

T: 02085 210 755

[hcolondon.com](http://hcolondon.com)



2 Bed  
House  
located in





21 Lower Road

Loughton  
IG10 2RT

£1,950 Per Month

 2

 1

 1

 C

TWO BEDROOM COTTAGE HOUSE --- SPACIOUS GARDEN --- FIRST FLOOR BATHROOM --- GAS CENTRAL HEATING & DOUBLE GLAZING --- AVAILABLE FROM THE 31ST MARCH --- CLOSE TO LOCAL AMENITIES --- GREAT CONDITION --- PART FURNISHED

Humphrey & Co Estates are proud to present this bright, spacious and beautiful two bedroom house located in Loughton. This Essex property features Two beautiful bedrooms, one first floor bathroom and a welcoming reception. Separate kitchen offering ample natural light. Less than a 10 minute drive from Loughton High Road. Unlike many comparable homes, there are no properties directly opposite, reducing overlooking and contributing to a quieter, more private outlook. On street parking.

Give our friendly team a call on 020 8521 0755 to secure a viewing!

