

## Clifden Road

Approximate Gross Internal Area  
Lower Ground Floor = 18.0 sq m / 194 sq ft  
Ground Floor = 46.0 sq m / 496 sq ft  
First Floor = 18.1 sq m / 196 sq ft  
Total = 82.2 sq m / 886 sq ft

This plan is for layout guidance only. Not drawn to scale unless stated. Windows and door openings are approximate. Whilst every care is taken in the preparation of this plan, please check all dimensions, shapes and compass bearings before making any decisions reliant upon them.

powered by:  
**THE360IMAGE**  
www.the360image.co.uk

## Directions

## Contact

125 Hoe Street  
London  
E17 4RX

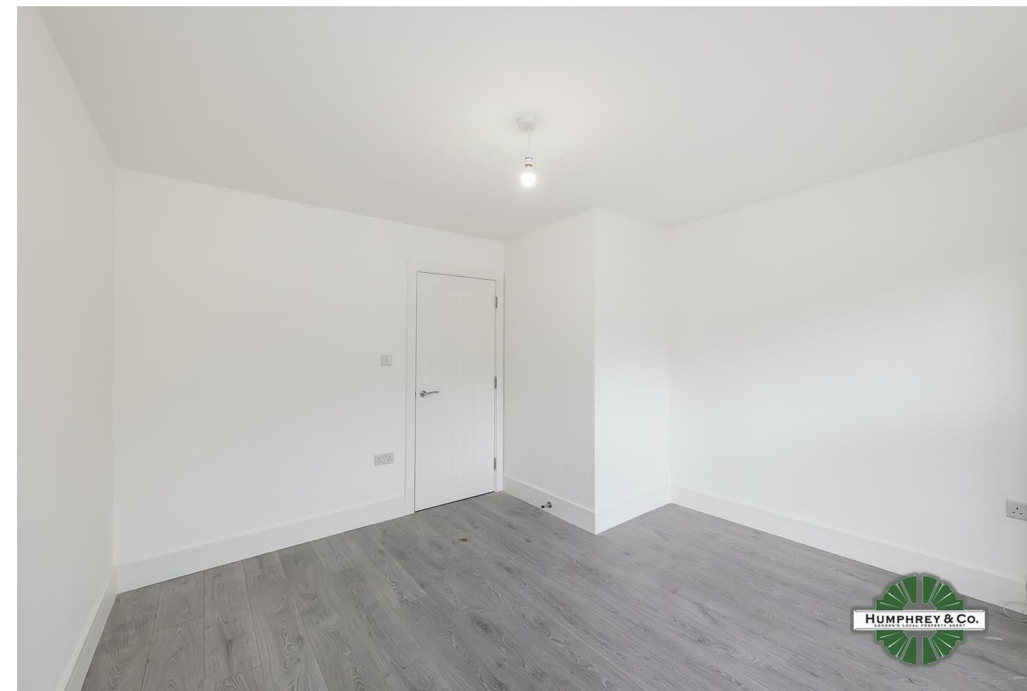
E: [lettings@hcolondon.com](mailto:lettings@hcolondon.com)

T: 02085 210 755

[hcolondon.com](http://hcolondon.com)



3 Bed  
Flat  
located in



59A Clifden Road

London

£3,200 Per Month

 3

 2

 1

 C

THREE BEDROOM FLAT --- HIGH END FINISH --- AVAILABLE FROM THE 14TH MARCH--- VICTORIAN CONVERSION --- MASSIVE BACK GARDEN --- DOUBLE GLAZED & GAS CENTRAL HEATING --- LAMINATE FLOORING --- TWO BATHROOMS ---

London's Local Property Agent, Humphrey & Co Estates are very proud to present this lovely mid terraced Victorian converted flat situated on the ground floor. Three bedrooms, two bathrooms, separate kitchen, neutral decor bright and airy. Unfurnished, Double glazed and gas central heating, Excellent condition & Massive garden.

Please call our friendly lettings team on 020 8521 0755 to secure a viewing.

