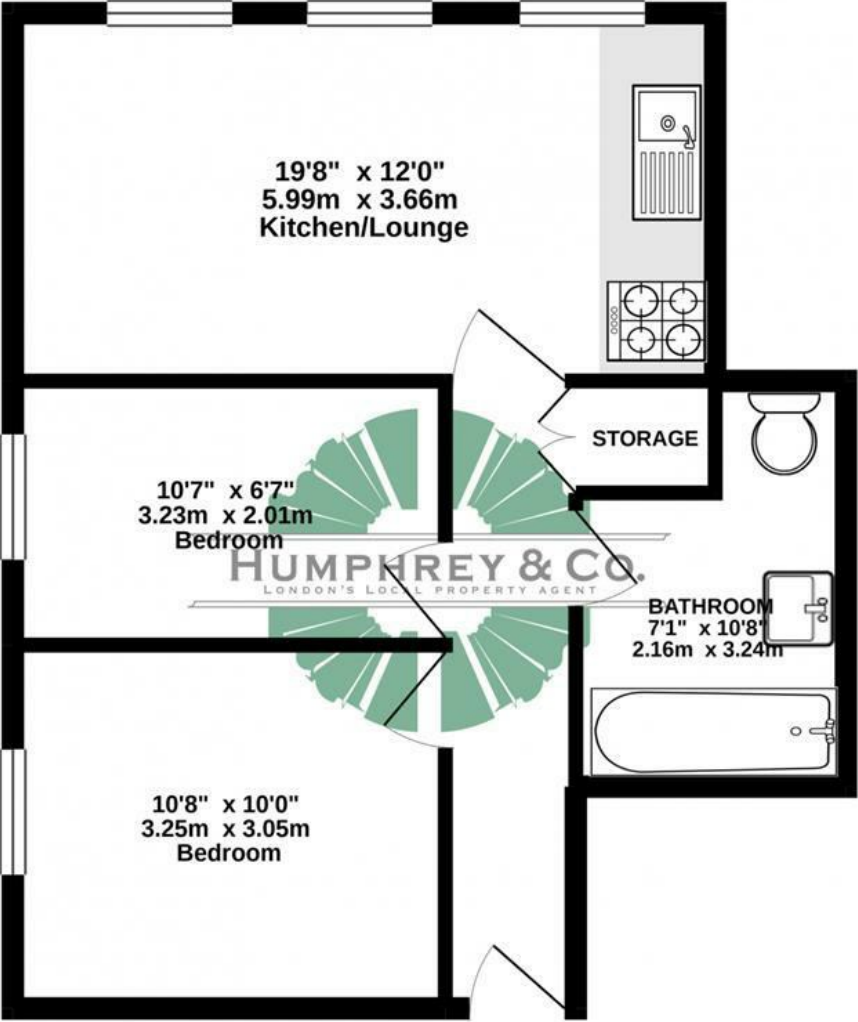


GROUND FLOOR  
496 sq.ft. (46.1 sq.m.) approx.



TOTAL FLOOR AREA : 496 sq.ft. (46.1 sq.m.) approx.  
Whilst every attempt has been made to ensure the accuracy of the floorplan contained here, measurements of doors, windows, rooms and any other items are approximate and no responsibility is taken for any error, omission or mis-statement. This plan is for illustrative purposes only and should be used as such by any prospective purchaser. The services, systems and appliances shown have not been tested and no guarantee as to their operability or efficiency can be given.  
Made with Metroplan ©2020

Directions

Contact

125 Hoe Street  
London  
E17 4RX

E: [lettings@hcolondon.com](mailto:lettings@hcolondon.com)

T: 02085 210 755

[hcolondon.com](http://hcolondon.com)



2 Bed  
Flat  
located in



65B Manor Road

Dagenham  
RM10 0DD

£1,700 PCM



CONVERTED FIRST FLOOR TWO BED FLAT — AVAILABLE FROM THE 4TH FEBRUARY — GAS CENTRAL HEATING & DOUBLE GLAZING — OPEN PLAN KITCHEN — TILED BATHROOM — PRIVATE GARDEN — NEUTRAL DECOR & BRIGHT AIRY — GOOD CONDITION

Humphrey & Co Estates are proud to present this Two Double bedroom First floor flat with private garden. The property compromises of a Fully tiled bathroom and Fully fitted Kitchen. Open Plan Kitchen and Lounge. A bright & airy property with natural light, ideal for professional sharers. Laminate flooring throughout with Double Glazing and Gas Central Heating. Approximately 15 minutes walk to Romford Station and the Town centre.

Call our friendly Lettings Team now to book a viewing!

Summary

