

1 Bed
Flat
located in



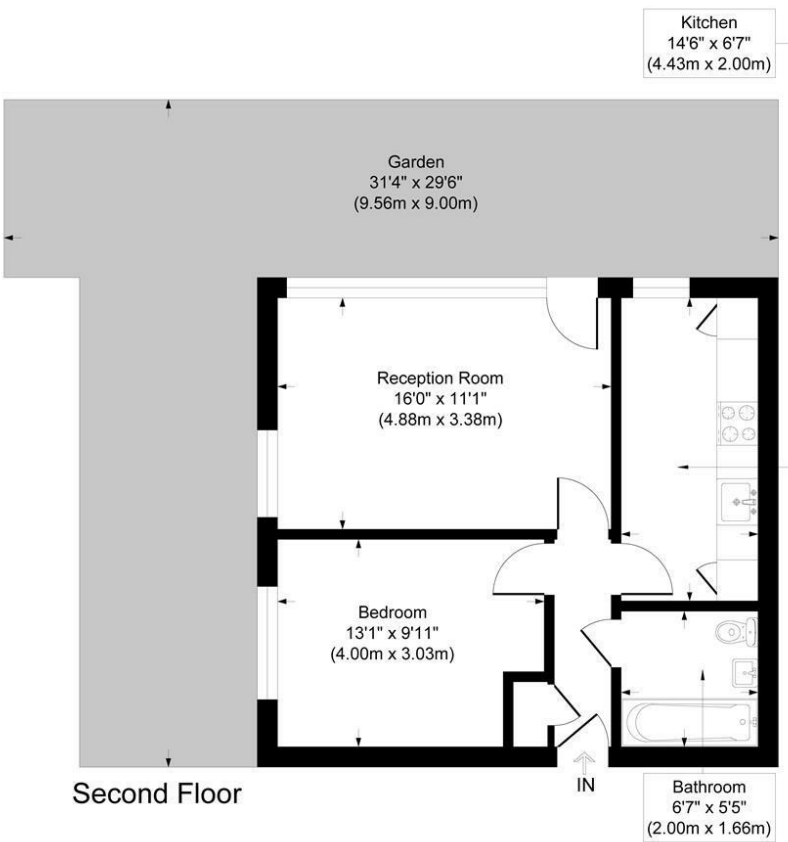
Bath Court St. Luke's
Estate, Bath Street

Approximate Gross Internal Area
Total = 46.1 sq m / 496 sq ft

This plan is for layout guidance only. Not drawn to scale unless stated.
Windows and door openings are approximate. Whilst every care is taken
in the preparation of this plan, please check all dimensions, shapes and
compass bearings before making any decisions reliant upon them.

powered by:
THE360IMAGE

www.the360image.co.uk



Directions

Contact

125 Hoe Street
London
E17 4RX

E: lettings@hcolondon.com

T: 02085 210 755

hcolondon.com

Flat 43 Bath Court St. Luke's Estate, Bath Street

£2,000 PCM



PURPOSE BUILT ONE BEDROOM FLAT --- VERY LARGE TERRACE --- STONE THROW AWAY FROM OLD STREET UNDERGROUND STATION --- TILED BATHROOM --- DOUBLE BEDROOM --- NEUTRAL DECOR, BRIGHT AND AIRY --- AVAILABLE 27TH DECEMBER --- UNFURNISHED --- GAS CENTRAL HEATING & DOUBLE GLAZING

London's Local Property Agent, Humphrey & Co Estates are proud to introduce to the lettings market this one double bedroom flat in a great location minutes away from Old St station. The flat has laminate flooring, separate reception, fully tiled bathroom, and fully fitted kitchen. Compromises of a large terrace on the second floor. The flat has option to purchase the furniture from the outgoing tenant.

Call our friendly team on 020 8521 0755 to secure a viewing.

Summary

