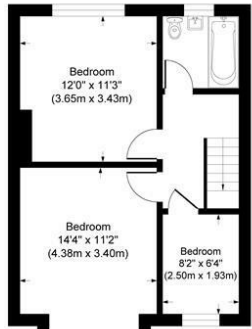




Ground Floor



First Floor



## Cecil Road

Approximate Gross Internal Area  
Ground Floor = 99.7 sq m / 1074 sq ft  
First Floor = 42.6 sq m / 459 sq ft  
Total = 142.3 sq m / 1532 sq ft

This plan is for layout guidance only. Not drawn to scale unless stated. Windows and door openings are approximate. Whilst every care is taken in the preparation of this plan, please check all dimensions, shapes and compass bearings before making any decisions reliant upon them.

powered by:  
**THE360IMAGE**  
www.the360image.co.uk

## Directions

## Contact

125 Hoe Street  
London  
E17 4RX

E: [lettings@hcolondon.com](mailto:lettings@hcolondon.com)

T: 02085 210 755

[hcolondon.com](http://hcolondon.com)



4 Bed  
House - Semi-Detached  
located in





57 Cecil Road

London  
E17 5DH

£2,600 PCM

4

1

1

E

END OF TERRACE HOUSE --- LARGE KITCHEN & DINING AREA --- DOUBLE GLAZED & GAS CENTRAL HEATING --- GOOD CONDITION --- THREE DOUBLES & ONE SINGLE --- PRIVATE GARDEN --- MINUTES TO THE A406 --- AVAILABLE 20TH MARCH ---

London's Local Property Agent, Humphrey & Co Estates are very proud to present the end of terraced house with three double bedrooms and one single with a large reception, large kitchen & dining area. The property has double glazed windows, gas central heating with a large private garden. Please call our friendly lettings team on 020 8521 0755 to secure a viewing. Located off the A406 and close to local amenities.

Summary

