



3 Bed
House
located in

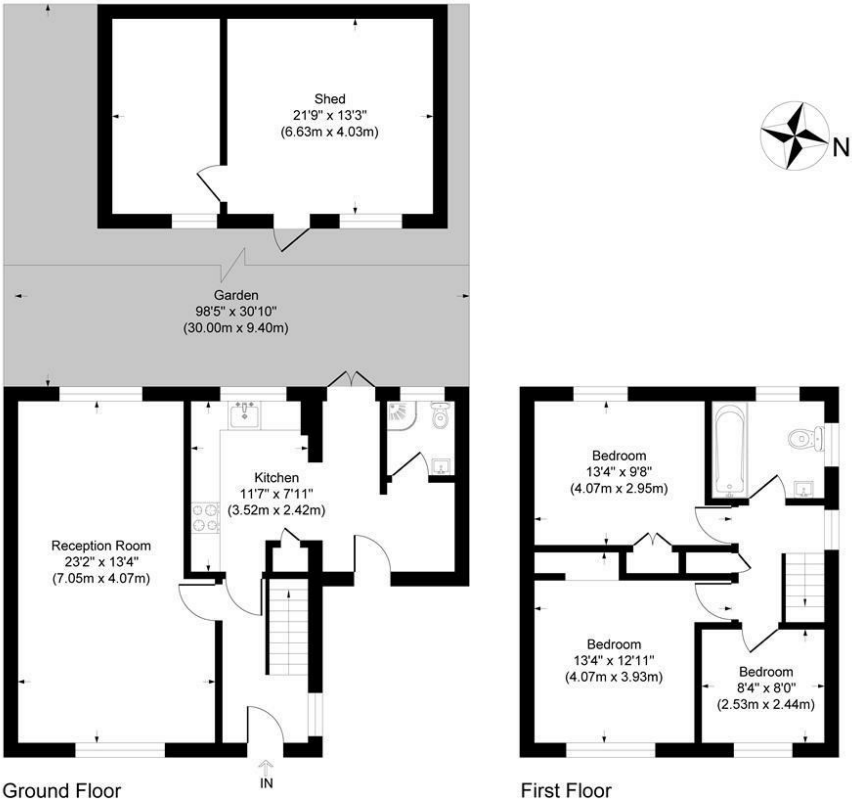


Tunnel Gardens

Approximate Gross Internal Area
Ground Floor = 52.8 sq m / 569 sq ft
First Floor = 42.2 sq m / 455 sq ft
Outbuilding = 26.7 sq m / 288 sq ft
Total = 121.7 sq m / 1312 sq ft

This plan is for layout guidance only. Not drawn to scale unless stated.
Windows and door openings are approximate. Whilst every care is taken
in the preparation of this plan, please check all dimensions, shapes and
compass bearings before making any decisions reliant upon them.

powered by:
THE360IMAGE
www.the360image.co.uk



Directions

Contact

125 Hoe Street
London
E17 4RX

E: sales@hcolondon.com

T: 02085 210 755

hcolondon.com

16 Tunnel Gardens

London
N14 0AD

Price Guide £525,000
Freehold



*****Guide Price £525,000 - £550,000*****

Humphrey & Co is pleased to present this spacious three bedroom Semi-Detached Family Home.

This family home comprise from entrance hall, spacious lounge, a large fitted kitchen with access to a large spacious garden. Upstairs there is a family bathroom with three good size bedrooms.

Other Benefits drive for three cars, double glazing, Gas central heating, at the garden spacious shed with electrics. This property has great transport links to London while the fashionable bars and restaurants are walking distance.

