

TOTAL APPROX. FLOOR AREA 327 SQ.FT. (30.4 SQ.M.)

Whilst every attempt has been made to ensure the accuracy of the floor plan contained here, measurements of doors, windows, rooms and any other items are approximate and no responsibility is taken for any error, omission, or mis-statement. This plan is for illustrative purposes only and should be used as such by any prospective purchaser. The services, systems and appliances shown have not been tested and no guarantee as to their operability or efficiency can be given  
Made with Metropix ©2018

### Directions

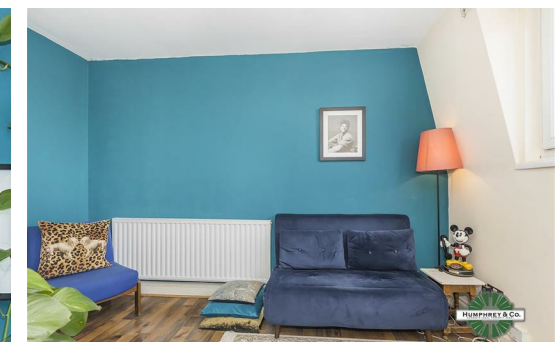
### Contact

125 Hoe Street  
London  
E17 4RX

E: [lettings@hcolondon.com](mailto:lettings@hcolondon.com)

T: 02085 210 755

[hcolondon.com](http://hcolondon.com)



1 Bed  
Flat  
located in





# 96D Glenarm Road

E5 0LZ

£1,450 PCM



ONE BEDROOM CONVERTED FLAT --- GOOD CONDITON --- THIRD FLOOR FLAT --- RESIDENTIAL ROAD --- DOUBLE GLAZED & GAS CENTRAL HEATING --- AVAILABLE FROM THE 22ND NOVEMBER 2024 --- OPEN PLAN --- FULLY FITTED KITCHEN --- PART TILED BATHROOM --- DOUBLE BEDROOM

Welcome to Glenarm Road, a charming flat that offers a perfect blend of comfort and convenience. This delightful property features a cosy reception room, ideal for relaxing or entertaining guests. With one bedroom, you'll find a peaceful retreat to rest and rejuvenate after a long day. The property also boasts a well-appointed bathroom, ensuring your daily routines are met with ease.

Situated in a prime location, this flat provides easy access to all the amenities you could desire. Whether you're looking for trendy cafes, convenient shops, or beautiful parks, everything is just a stone's throw away.

Don't miss the opportunity to make this lovely flat your new home. Contact us today to arrange a viewing and experience the charm of Glenarm Road for yourself.

The property features one double bedroom. The kitchen is fully fitted and has as an open plan space leading into the lounge. The property has double glazing and gas central heating. The entire property is neutrally

## Summary

ONE BEDROOM CONVERTED FLAT --- GOOD CONDITON --- THIRD FLOOR FLAT --- RESIDENTIAL ROAD --- DOUBLE GLAZED & GAS CENTRAL HEATING --- AVAILABLE FROM THE 23RD FEBRUARY 2023 --- OPEN PLAN --- FULLY FITTED KITCHEN --- PART TILED BATHROOM --- DOUBLE BEDROOM London's Local Property Agent, Humphrey & Co Estates present this fantastic one bedroom apartment in Hackney/Clapton. The property features one double bedroom. The kitchen is fully fitted and has as an open plan space leading into the lounge. The property has double glazing and gas central heating. The entire property is neutrally presented with laminate flooring throughout. Third floor loft conversion. To secure a viewing please contact the lettings team.



Energy Efficiency Rating		Current	Potential
Very energy efficient - lower running costs			
(92 plus) A			
(81-91) B			
(69-80) C			
(55-68) D			
(39-54) E			
(21-38) F			
(1-20) G			
Not energy efficient - higher running costs			
England & Wales		EU Directive 2002/91/EC	

