

TOTAL APPROX. FLOOR AREA 293 SQ.FT. (27.2 SQ.M.)

Whilst every attempt has been made to ensure the accuracy of the floor plan contained here, measurements of doors, windows, rooms and any other items are approximate and no responsibility is taken for any error, omission, or mis-statement. This plan is for illustrative purposes only and should be used as such by any prospective purchaser. The services, systems and appliances shown have not been tested and no guarantee as to their operability or efficiency can be given  
 Made with Metropix ©2019

**Directions**

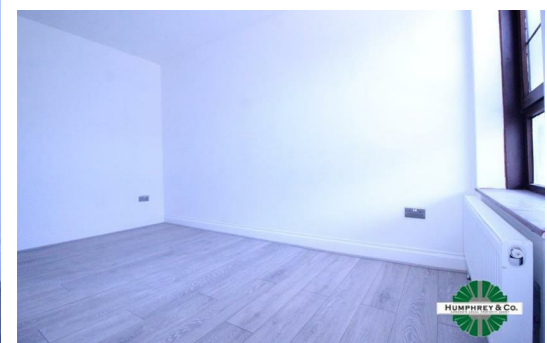
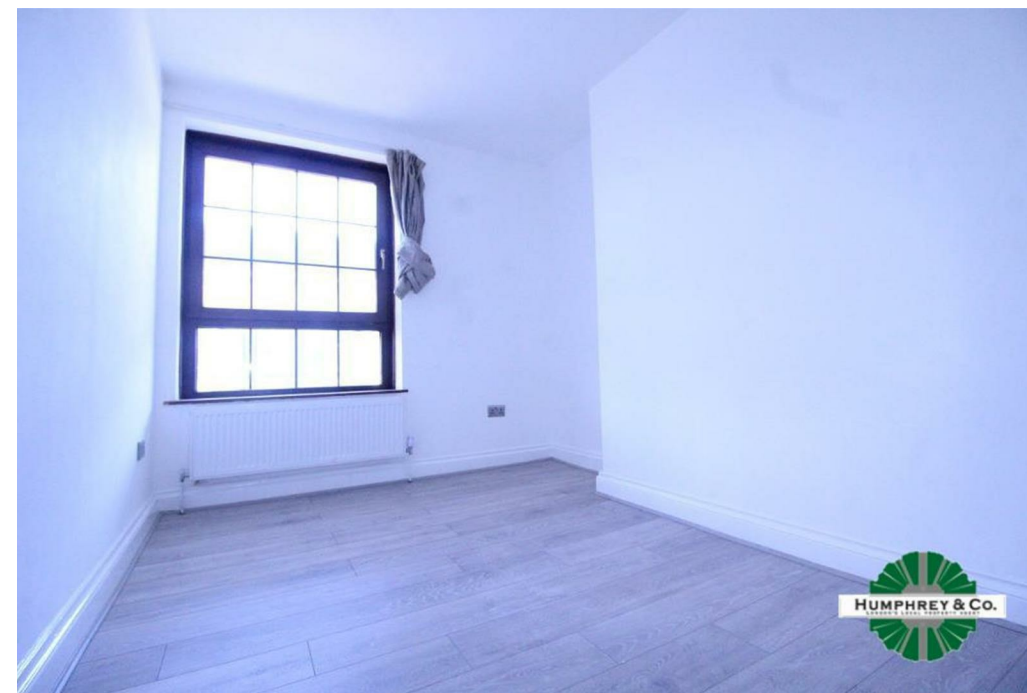
**Contact**

125 Hoe Street  
 London  
 E17 4RX

E: [lettings@hcolondon.com](mailto:lettings@hcolondon.com)

T: 02085 210 755

[hcolondon.com](http://hcolondon.com)



**2 Bed  
 Flat - Purpose Built  
 located in**



# Flat 24, Rhodes House Provost Estate

London

£2,200 Per month



EX-LOCAL TWO BEDROOM FLAT --- MINUTES AWAY FROM SHOREDITCH --- MODERN --- UNFURNISHED --- AVAILABLE FROM THE 28TH AUGUST --- SEPERATE KITCHEN --- DOUBLE BEDROOMS --- FORTH FLOOR FLAT (NO LIFT) --- NEUTRAL DECOR --- SEPERATE W/C

London's Local Property Agent, Humphrey & Co Estates present this Ex local Two bed flat minutes from Shoreditch and Old Street Station, refurbished a few years ago. Compromises of two double bedrooms, spacious living room, separate W/C, neutral decor, bright airy with laminate flooring throughout. Double glazed and gas central heating. Fully fitted kitchen with a separate lounge, part furnished or unfurnished.

Located close to shops and amenities with great transport links.

Please call our friendly lettings team to secure a viewing.

