

**Directions**

**Contact**

125 Hoe Street  
London  
E17 4RX

E: [lettings@hcolondon.com](mailto:lettings@hcolondon.com)

T: 02085 210 755

[hcolondon.com](http://hcolondon.com)



**2 Bed  
Flat  
located in**





# 18 Fairland Road

London  
E15 4AF

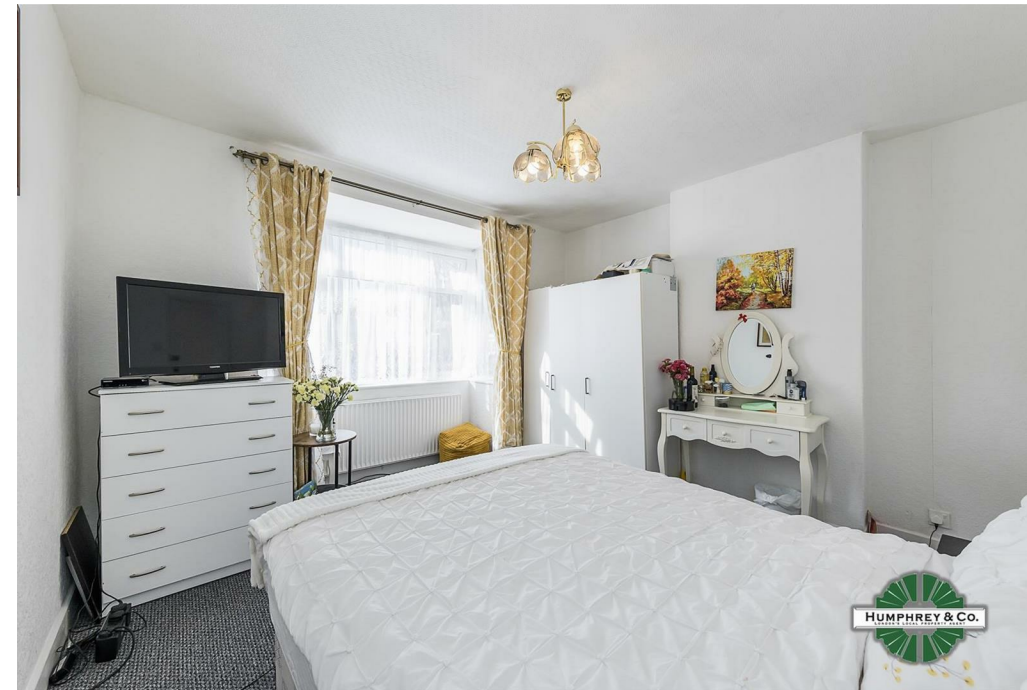
£1,600 Per month



FIRST FLOOR PURPOSE BUILT FLAT --- ONE DOUBLE AND ONE SINGLE---OPEN PLAN LIVING ROOM -- ONE BATHROOM --- UNFURNISHED --- AVAILABLE RIGHT NOW ---EXCELLENT LOCATION

London's Local Property Agent, Humphrey & Co Estates bring this two bedroom flat to the lettings market. Compromises of one double and one single, offered unfurnished, neutral decor, bright and airy. Good location, Ideal for a working professionals.

To secure a viewing please call our friendly lettings team.



Energy Efficiency Rating		Current	Potential
Very energy efficient - lower running costs			
(92 plus) A			
(81-91) B			
(69-80) C			
(55-68) D			
(39-54) E			
(21-38) F			
(1-20) G			
Not energy efficient - higher running costs			

England & Wales EU Directive 2002/91/EC

Google Map data ©2024

