

Directions

Contact

125 Hoe Street
London
E17 4RX

E: lettings@hcolondon.com

T: 02085 210 755

hcolondon.com



1 Bed
Office
located in



Unit 11 Bourne Court Unity Trading Estate

100 011

£1,000 Per month

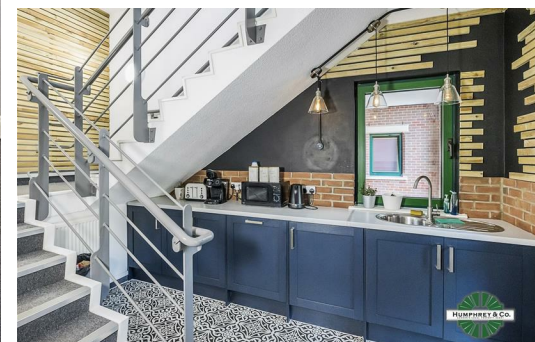


- 12 MONTH CONTRACT --- MODERN CLEAN OFFICES --- FREE VISITOR PARKING --- UTILITY BILLS INCLUDED --- KITCHEN WITH MICROWAVE & DISHWASHER ---

Humphrey & Co Estates are pleased to present to market, this modern clean office space to let which measures approximately 430 sqft.

The office space in this commercial building has scope and potential for growth. Ideal for start-ups with the option to move to bigger offices when more established or big business needing a space for its employees. There is ample space available for 10 people.

This property is ideally situated within close proximity to Woodford Green High Road (A1199),. South Woodford Station, which has the Central Line passing through and a few minutes' drive from the A406, interconnecting the office to the rest of London.



Energy Efficiency Rating		Current	Potential
Very energy efficient - lower running costs			
(92 plus) A			
(81-91) B			
(69-80) C			
(55-68) D			
(39-54) E			
(21-38) F			
(1-20) G			
Not energy efficient - higher running costs			
England & Wales		EU Directive 2002/91/EC	

