

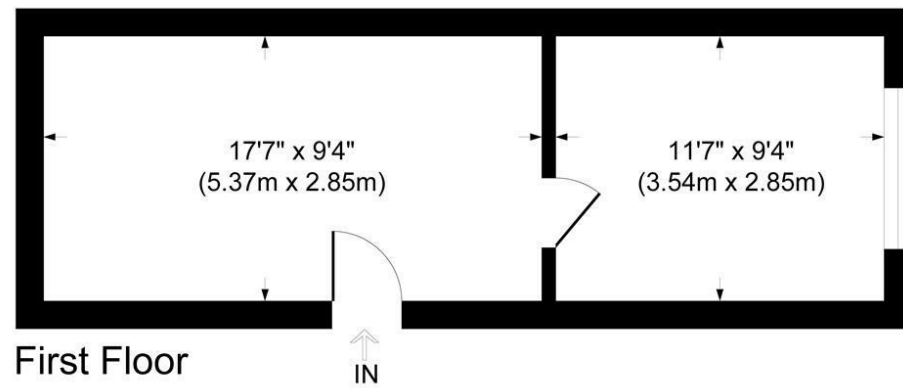


Bourne Court

Approximate Gross Internal Area
Total = 25.8 sq m / 278 sq ft

This plan is for layout guidance only. Not drawn to scale unless stated. Windows and door openings are approximate. Whilst every care is taken in the preparation of this plan, please check all dimensions, shapes and compass bearings before making any decisions reliant upon them.

powered by:
THE360IMAGE
www.the360image.co.uk



First Floor

↑
IN



Directions

Contact

125 Hoe Street
London
E17 4RX

E: lettings@hcolondon.com

T: 02085 210 755

hcolondon.com



1 Bed
Office
located in



Unit 13 Bourne Court Unity Trading Estate

London

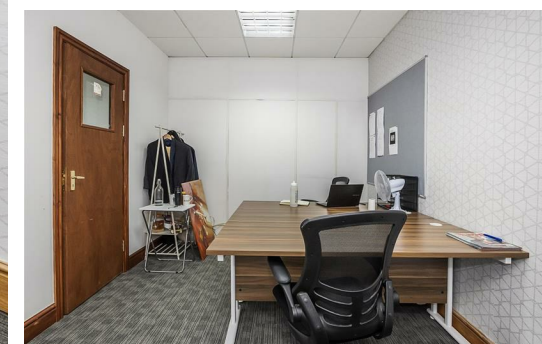
£1,800



Humphrey & Co Estates are pleased to present to market, this modern clean office space to let which measures approximately 474.47 sqft.

The office space in this commercial building has scope and potential for growth. Ideal for start-ups with the option to move to bigger offices when more established or big business needing a space for its employees. There is ample space available for 8 people.

This property is ideally situated within close proximity to Woodford Green High Road (A1199),. South Woodford Station, which has the Central Line passing through and a few minutes' drive from the A406, interconnecting the office to the rest of London.



Energy Efficiency Rating		Current	Potential
Very energy efficient - lower running costs			
(92 plus) A			
(81-91) B			
(69-80) C			
(55-68) D			
(39-54) E			
(21-38) F			
(1-20) G			
Not energy efficient - higher running costs			
England & Wales		EU Directive 2002/91/EC	

