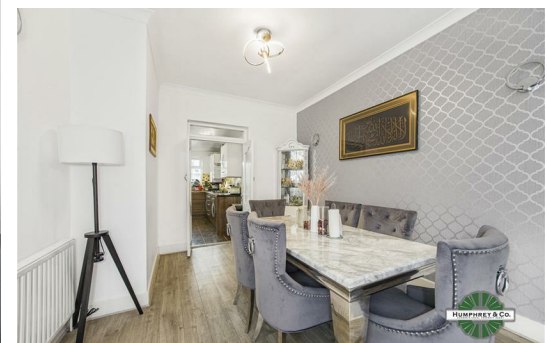


Liverpool Road

Approximate Gross Internal Area
 Ground Floor = 87.0 sq m / 937 sq ft
 First Floor = 47.7 sq m / 515 sq ft
 Second Floor = 24.6 sq m / 265 sq ft
 Total = 159.5 sq m / 1717 sq ft

This plan is for layout guidance only. Not drawn to scale unless stated. Windows and door openings are approximate. Whilst every care is taken in the preparation of this plan, please check all dimensions, shapes and compass bearings before making any decisions reliant upon them.

powered by:
THE360IMAGE
www.the360image.co.uk



Directions

Contact

125 Hoe Street
 London
 E17 4RX

E: sales@hcolondon.com

T: 02085 210 755

hcolondon.com



4 Bed
 House - Terraced
 located in



3 Liverpool Road

London
E10 6DN

£750,000
Freehold



Humphrey & Co Estates is pleased to present this fabulous mid terraced four bedroom house for sale in Leyton, on Liverpool Road.

With 1,717 square feet of space, this home provides plenty of room both inside and out. The house has been well expanded with a kitchen/dining room addition and a roof conversion, but there is still potential to extend further and add more space (with the required consents).

The ground floor benefits from a good size bedroom and a shower room as well as a magnificent throughout lounge opening to a spacious kitchen. Two double bedrooms, a box room and an additional shower room are located on the first floor.

