



Approximate Gross Internal Area 2818 sq ft – 262 sq m
 Ground Floor Area 893 sq ft – 83 sq m
 First Floor Area 893 sq ft – 83 sq m
 Second Floor Area 501 sq ft – 47 sq m
 Garage Area 532 sq ft – 49 sq m



Although Pink Plan Ltd ensures the highest level of accuracy, measurements of doors, windows and rooms are approximate and no responsibility is taken for error, omission or misstatement. These plans are for representation purposes only as defined by RICS code of measuring practise. No guarantee is given on total square footage of the property within this plan. The figure icon is for initial guidance only and should not be relied on as a basis of valuation.



Directions

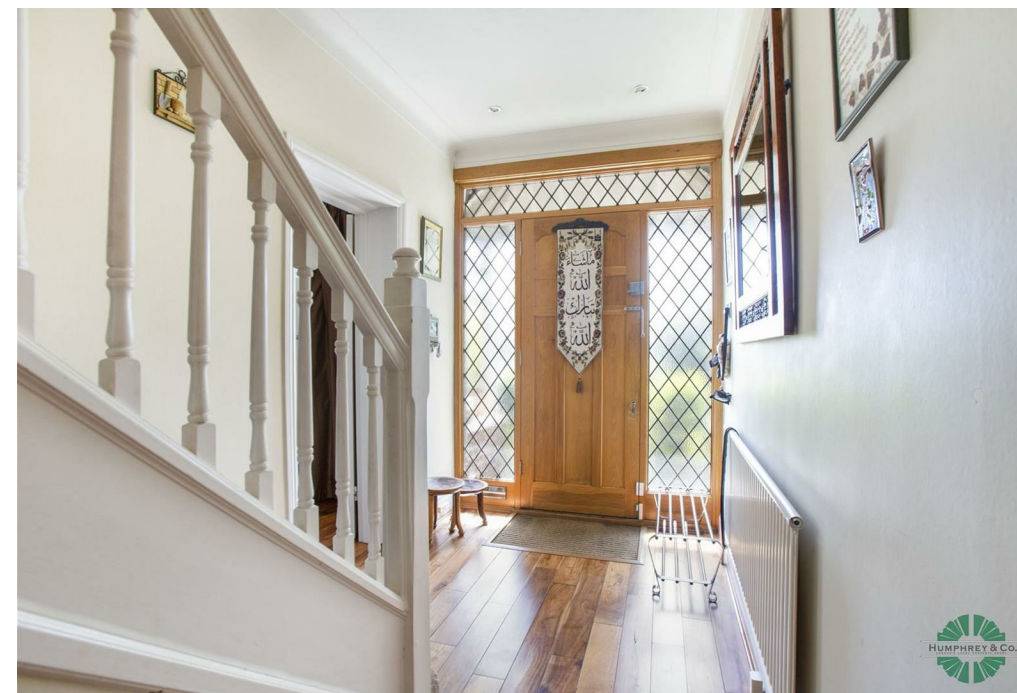
Contact

125 Hoe Street
 London
 E17 4RX

E: sales@hcolondon.com

T: 02085 210 755

hcolondon.com



5 Bed
 House - End Terrace
 located in



27 St. Peter's Avenue

London
E17 2DU

Asking price £1,000,000
Freehold



Humphrey & Co Estates Pleased to present this Semi-Detached Family Home

In terms of the first floor, each of the three bedrooms are well-proportioned doubles. The master bedroom has an en-suite and a walk-in wardrobe. The family bathroom is fully tiled (with a bath and shower cubicle) and the hallway offers ample space which is currently being used as an office.

Moving upstairs, two double bedrooms and a fully tiled shower room are waiting for you on the second floor. The larger bedroom benefits from a dormer with a Juliette balcony, which offers stunning views.

The property also comes with a gorgeous 49 square metre annex. The outbuilding can be easily adapted to host family members or an Au-Pair. Moreover, it can also be turned into a proper work from home office, which can end up being an immensely valuable house attribute these days.

Speaking about the outdoor area, it is difficult to overstate its size and diversity. The corner posture makes for an unusually large and wonderfully secluded expanse of outside space. The garden is very reasonably sized and is surrounded by lovely trees, which guarantees a great deal of privacy. The future owner will have a few secluded seating spots, all ideal for dining al fresco.

