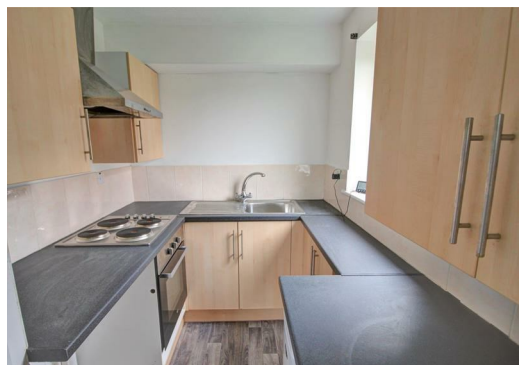




Cornfield Drive,
Lichfield, Staffordshire, WS14 9UG
£550 PCM



Newton Fallowell are delighted to offer TO LET this refurbished Ground floor studio apartment. Located in a cul-de-sac position on the popular Boley Park estate.

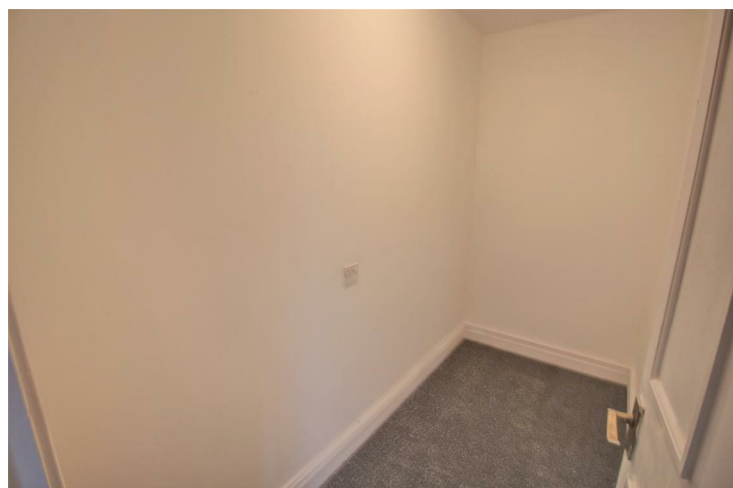
This recently decorated property briefly comprises of a Lounge/Bedroom area, Modern Shower Room, Modern Kitchen and Inner Lobby/Dressing Room. Externally this property benefits from allocated off road parking to the side.

Available from the middle of May! Call Newton Fallowell to arrange your viewing!

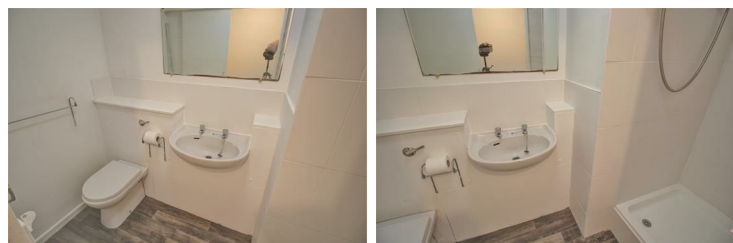
Outside



Dressing Room



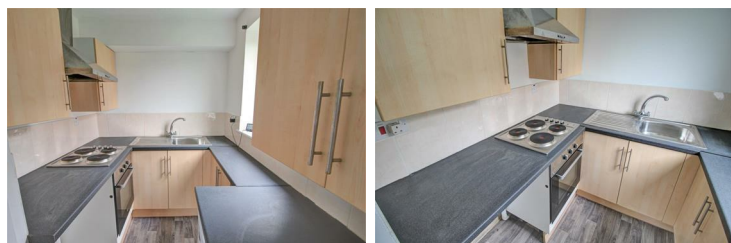
Shower Room



Living Room

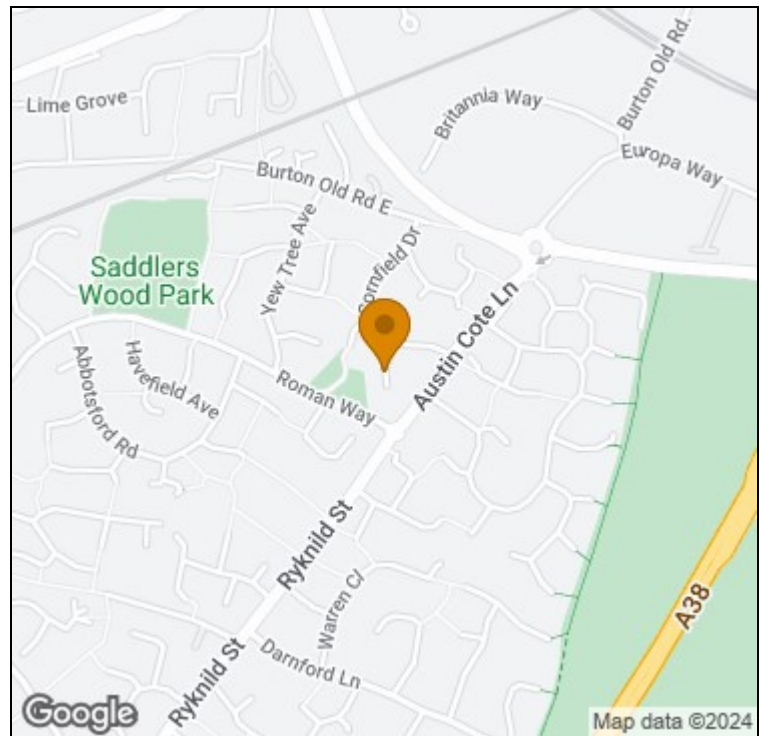


Kitchen



Energy Efficiency Rating		
	Current	Potential
Very energy efficient - lower running costs		
(92 plus) A		
(81-91) B		
(69-80) C		
(55-68) D		
(39-54) E		
(21-38) F		
(1-20) G		
Not energy efficient - higher running costs		
England & Wales	EU Directive 2002/91/EC	

Environmental Impact (CO ₂) Rating		
	Current	Potential
Very environmentally friendly - lower CO ₂ emissions		
(92 plus) A		
(81-91) B		
(69-80) C		
(55-68) D		
(39-54) E		
(21-38) F		
(1-20) G		
Not environmentally friendly - higher CO ₂ emissions		
England & Wales	EU Directive 2002/91/EC	



t: 01543251310 e: lichfield@newtonfallowell.co.uk

www.newtonfallowell.co.uk