



 Jan Forster

 Jan Forster

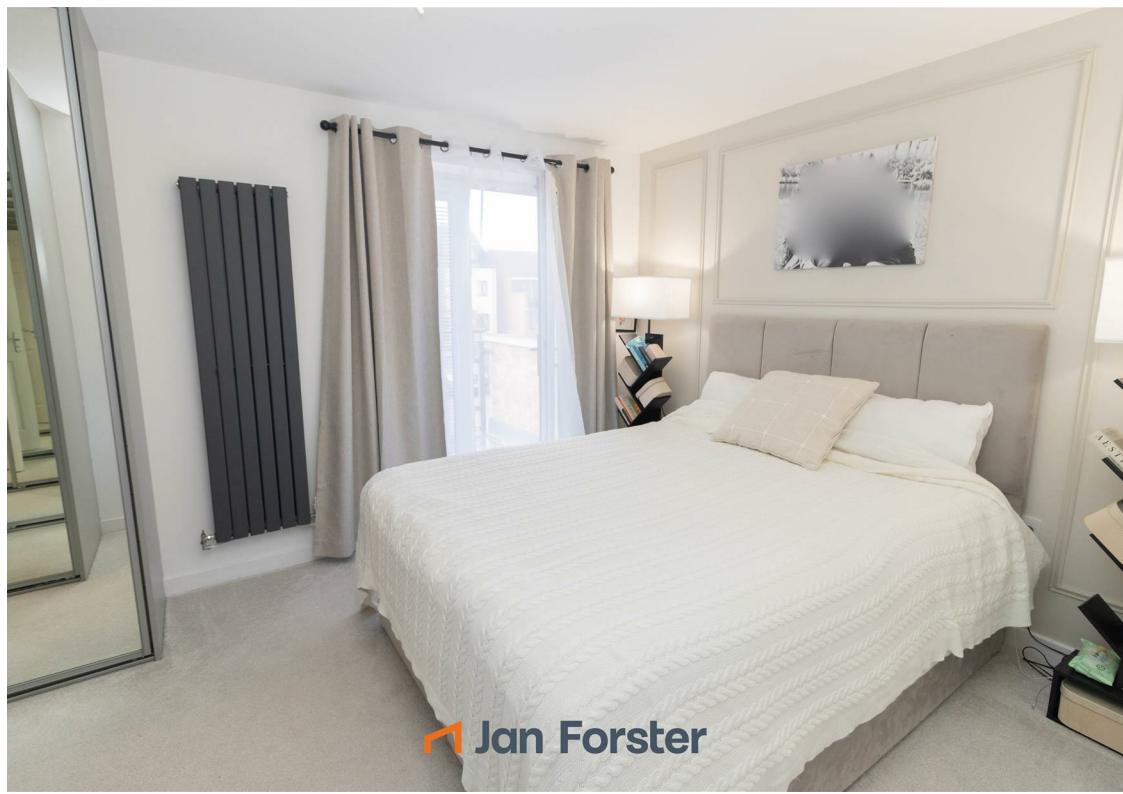


Ridley Drive | East Benton Rise | Wallsend | NE28 9FL  
Offers Over £265,000





- Ideal Family Home
- Two Reception Rooms
- Two Bathrooms
- Rear Garden
- Freehold
- Three Bedroom Detached
- Ground Floor WC
- Off Street Parking
- Modern Development
- Call For More Information







**\*\* Video Tour on our YouTube Channel | <https://youtu.be/rZwLyKuiy0A> \*\***

This beautifully presented three-bedroom detached home, located on a highly sought-after development in Wallsend, offers modern and spacious accommodation in a popular and well-connected residential area.

East Benton Rise is ideally positioned close to a wide range of local amenities, highly regarded schools, and excellent transport links, offering easy access to Newcastle City Centre, the Coast, and surrounding areas. This modern, stylish, and well-appointed home is perfect for families or professionals seeking comfort and convenience in one of Wallsend's most desirable developments.

The property itself offers fantastic accommodation over two floors and briefly comprises: - an entrance vestibule, a bright and airy lounge, a stylish kitchen diner with fitted units, integrated oven and hob and French doors opening onto the garden, a convenient downstairs WC, and a versatile family room which also has French door access to the front.

To the first floor, there is a superb main bedroom featuring an en-suite and a stunning private balcony, as well as two further good-sized bedrooms and a modern family bathroom WC. The property also boasts gas central heating, double glazing, and ample storage throughout.

Externally, the home benefits from a delightful garden to the rear featuring a stylish decked area, covered by a pergola, providing the perfect space for outdoor dining or unwinding. To the front there is a driveway providing off-street parking and a neat lawned area.

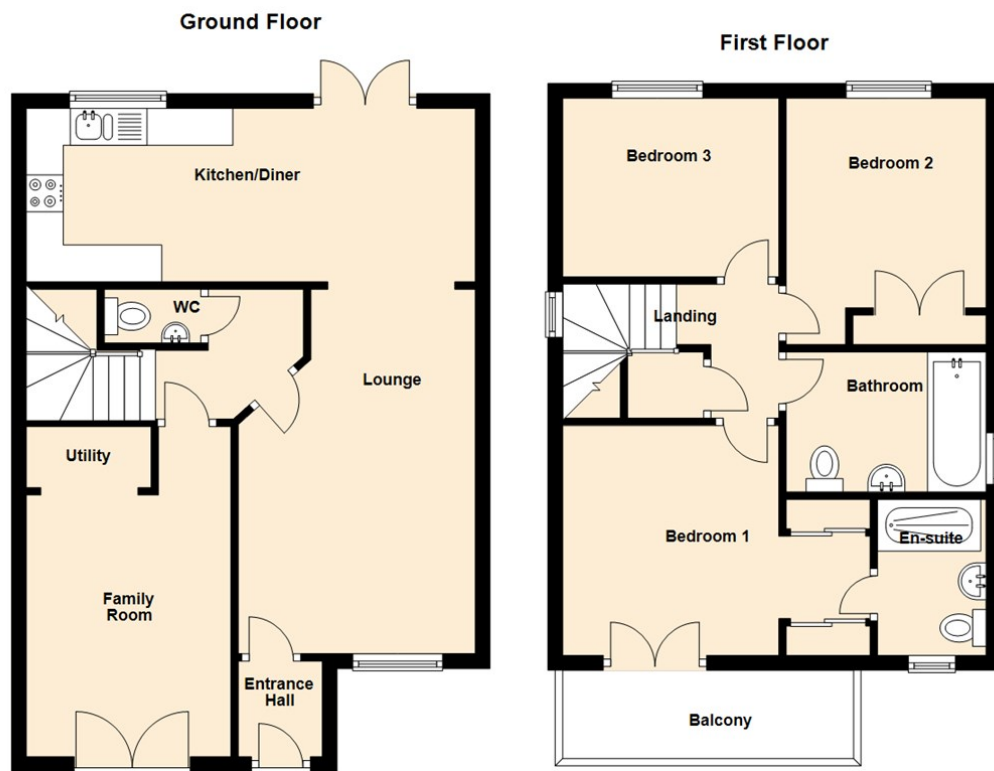
For more information and to book a viewing please call our team on 0191 217 1122.

#### Tenure

The agent understands the property to be freehold. However, this should be confirmed with a licenced legal representative.

Council Tax band: C





Lounge 16'2" x 10'6" (4.94 x 3.21)

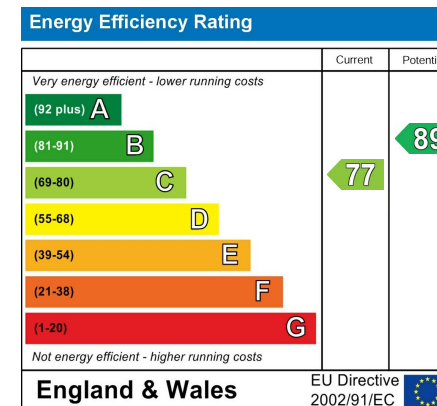
Kitchen Dining Room 7'8" x 19'11" (2.35 x 6.09)

Family Room 14'8" x 9'1" (4.48 x 2.77)

Bedroom One 10'2" x 13'8" (3.12 x 4.17)

Bedroom Two 10'11" x 8'10" (3.34 x 2.71)

Bedroom Three 7'11" x 9'7" (2.42 x 2.93)



## The difference between house and home

You may download, store and use the material for your own personal use and research. You may not republish, retransmit, redistribute or otherwise make the material available to any party or make the same available on any website, online service or bulletin board of your own or of any other party or make the same available in hard copy or in any other media without the website owner's express prior written consent. The website owner's copyright must remain on all reproductions of material taken from this website.



[www.janforsterestates.com](http://www.janforsterestates.com)

Gosforth  
High Heaton  
Tynemouth

Property Management Centre

0191 236 2070  
0191 270 1122  
0191 257 2000  
0191 236 2680

