





- End of Terrace
- Close to Amenities
- Two Bathrooms
- Freehold
- Viewing Recommended
- Two Double Bedrooms
- Open Plan Living
- Ground Floor WC
- Council Tax Band *B*
- Call For More Information





This two double bedroom, end of terraced house, is located in Westbury Court, Longbenton.

Positioned conveniently for access to Longbenton and Four Lane Ends Metro stations, and a wide variety of local shops. Newcastle City Centre is within easy commuting distance, as are surrounding areas.

The property which benefits from gas central heating and double glazing briefly comprises:- entrance hall, ground floor WC, sizeable open plan lounge/kitchen with French doors to a private rear garden. To the first floor, there are two double bedrooms both with en-suite facilities.

Viewings are highly recommended. Please call our High Heaton team on 0191 270 1122 for more information.

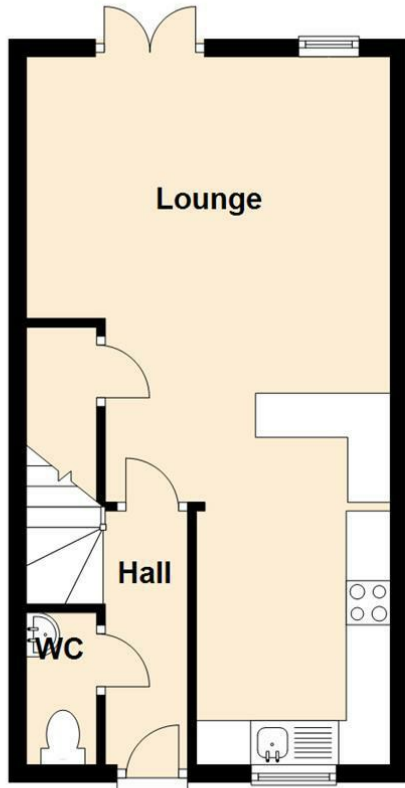
Tenure

The agent understands the property to be freehold. However, this should be confirmed with a licenced legal representative.

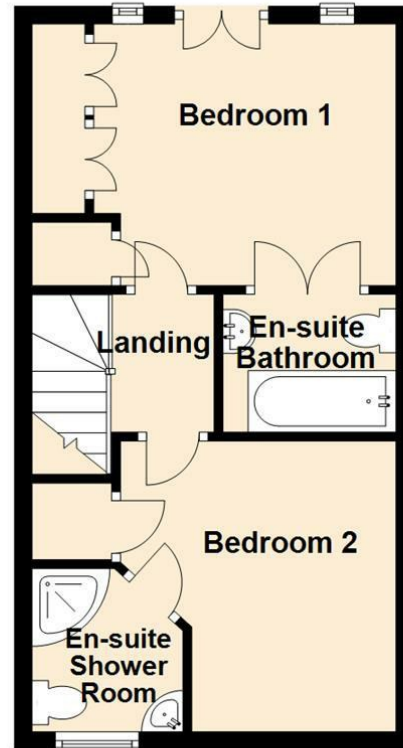
Council Tax Band *B*.



Ground Floor



First Floor




Lounge 15'11" x 13'8" (4.87 x 4.18)

Kitchen 13'6" x 7'0" (4.12 x 2.15)

Bedroom One 11'4" x 9'4" (3.47 x 2.86)

Bedroom Two 10'0" x 9'8" (3.06 x 2.96)

Energy Efficiency Rating		
	Current	Potential
<i>Very energy efficient - lower running costs</i>		
(92 plus) A		89
(81-91) B		
(69-80) C	72	
(55-68) D		
(39-54) E		
(21-38) F		
(1-20) G		
<i>Not energy efficient - higher running costs</i>		
England & Wales		EU Directive 2002/91/EC 

The difference between house and home

You may download, store and use the material for your own personal use and research. You may not republish, retransmit, redistribute or otherwise make the material available to any party or make the same available on any website, online service or bulletin board of your own or of any other party or make the same available in hard copy or in any other media without the website owner's express prior written consent. The website owner's copyright must remain on all reproductions of material taken from this website.



www.janforsterestates.com

Gosforth

0191 236 2070

Newcastle

0191 284 4050

High Heaton

0191 270 1122

Tynemouth

0191 257 2000

Low Fell

0191 487 0800

Property Management Centre

0191 236 2680

