







3



1



1

- Corner Plot
- Three Bedrooms
- Ground Floor WC
- Off Street Parking
- Freehold
- Well Presented
- Popular Location
- Wood Burning Stove
- Council Tax Band: A
- Call For More Information







\*\* Video Tour on our YouTube Channel | <https://youtu.be/ki0HLXS6p9w>  
\*\*

This beautifully presented three-bedroom semi-detached home is ideally situated on the sought-after Newton Road, offering stylish and spacious living in a prime location.

Set on a generous corner plot, the property benefits from wrap-around gardens to the front and side, along with a driveway providing convenient off-street parking.

This property is perfectly located close to well-regarded schools, a supermarket, and a gym, with excellent transport links providing quick and easy access to Newcastle city centre – making it an ideal choice for families and professionals alike.

Upon entering, you're welcomed by a bright entrance porch and hallway leading to a cosy lounge complete with a wood-burning stove – the ideal space to relax. To the rear, the open-plan kitchen/diner features a range of modern fitted units and provides direct access to the garden. A convenient downstairs WC adds to the practicality of the ground floor layout.

Upstairs, the first-floor landing leads to three well-proportioned bedrooms and a contemporary shower room with sleek, contrasting fittings that add a touch of modern luxury. Further benefits include gas central heating and double glazing and the roof was fully renewed in March 2025.

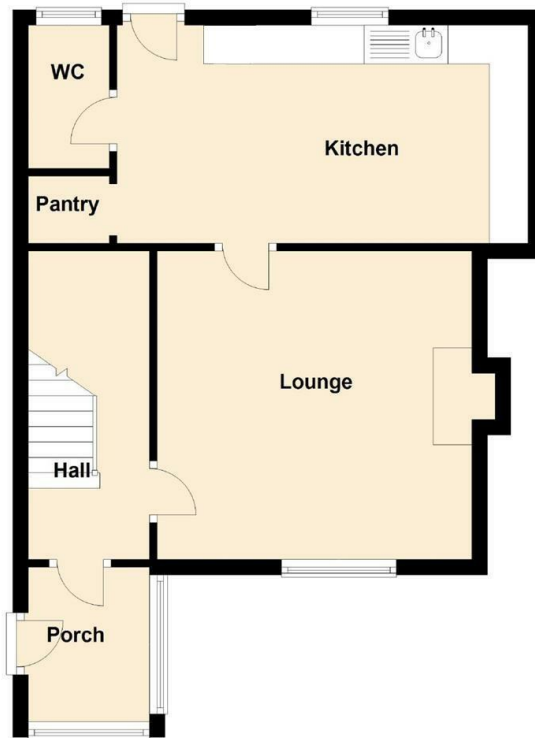
With its spacious layout, corner plot, and high standard of presentation throughout, this home must be viewed to be fully appreciated. For more information please call our team on 0191 270 1122.

Tenure:

The agent understands the property to be freehold. However, this should be confirmed with a licensed legal representative.

Council Tax Band: A

## Ground Floor



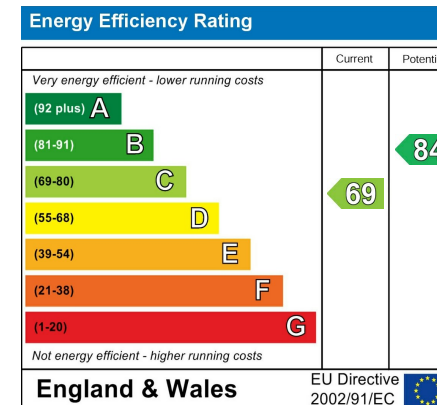
Lounge 13'5" x 13'0" (4.09 x 3.98)

Kitchen 14'5" x 9'3" (4.40 x 2.83)

Bedroom One 13'3" x 9'8" (4.05 x 2.96)

Bedroom Two 9'4" x 11'0" (2.87 x 3.36)

Bedroom Three 9'7" x 6'11" (2.94 x 2.13)



## The difference between house and home

You may download, store and use the material for your own personal use and research. You may not republish, retransmit, redistribute or otherwise make the material available to any party or make the same available on any website, online service or bulletin board of your own or of any other party or make the same available in hard copy or in any other media without the website owner's express prior written consent. The website owner's copyright must remain on all reproductions of material taken from this website.



[www.janforsterestates.com](http://www.janforsterestates.com)

Gosforth  
High Heaton  
Tynemouth  
Property Management Centre

0191 236 2070  
0191 270 1122  
0191 257 2000  
0191 236 2680

