







- Detached House
- Three Bedrooms
- Garage & Driveway
- Cul-De-Sac Location
- Council Tax Band: D
- Sought-After Area
- Two Bathrooms
- Close to Local Amenities
- Freehold
- Call For More Information







Jan Forster Estates are delighted to welcome to the market this stylish, three bedroom detached family home, positioned on the highly sought-after cul-de-sac of Old Campus Close, in High Heaton.

Ideally positioned, this property benefits from a wealth of nearby amenities and excellent transport connections, including the Coast Road, Central Motorway, and A1. It is also within easy commuting distance of the scenic Jesmond Dene, Paddy Freeman's Park, the highly regarded Freeman Hospital, and well-regarded local schools - making it an excellent choice for families and professionals alike.

Briefly comprising to the ground floor: - entrance hallway, dining room, ground floor WC, bright and airy lounge with French doors access to the rear and a modern kitchen with fitted wall and floor units. Off the landing to the first floor, there are three good-sized bedrooms- bedroom one benefitting from an en-suite shower room and built-in wardrobes, and there is also a three-piece family bathroom WC.

Externally, there is a small garden and driveway to the front providing off-street parking for multiple vehicles, leading to the garage. To the rear, there is a good-sized garden with a patio area and lawn - an ideal space for entertaining during those long summer nights.

We anticipate an extremely high level of viewings for this fantastic property. For more information and to book your viewing, please call our High Heaton sales team on 0191 270 1122.

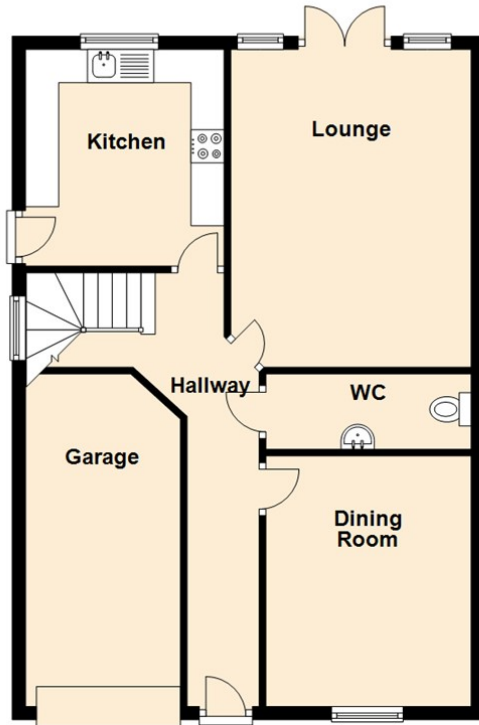
#### Tenure

The agent understands the property to be freehold. However, this should be confirmed with a licenced legal representative.

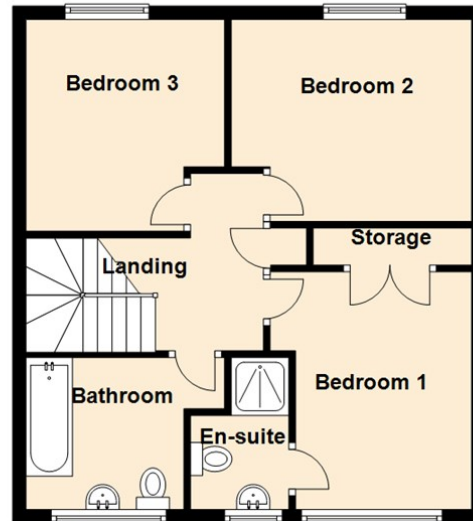
Council Tax band: D



Ground Floor



First Floor



Lounge 8'6" x 14'11" (2.60 x 4.55)

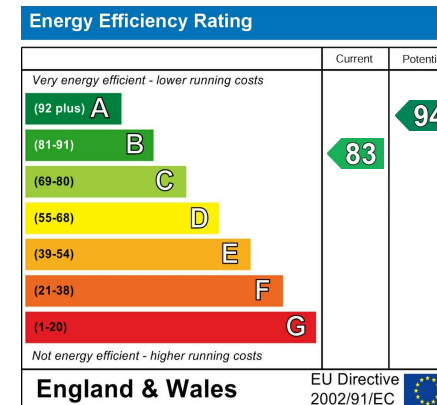
Dining Room 9'11" x 8'6" (3.04 x 2.60)

Kitchen 9'6" x 9'9" (2.92 x 2.98)

Bedroom One 10'6" x 11'3" (3.22 x 3.45)

Bedroom Two 11'8" x 9'9" (3.56 x 2.98)

Bedroom Three 8'9" x 9'8" (2.68 x 2.96)



## The difference between house and home

You may download, store and use the material for your own personal use and research. You may not republish, retransmit, redistribute or otherwise make the material available to any party or make the same available on any website, online service or bulletin board of your own or of any other party or make the same available in hard copy or in any other media without the website owner's express prior written consent. The website owner's copyright must remain on all reproductions of material taken from this website.



[www.janforsterestates.com](http://www.janforsterestates.com)

Gosforth  
High Heaton  
Tynemouth  
Property Management Centre

0191 236 2070  
0191 270 1122  
0191 257 2000  
0191 236 2680

