







3



1



2

- Professional Landlord
- Brand New Property
- White Goods Included
- Off Road Parking
- Pets Considered
- Call For More Information
- Long Term Tenancies Available
- Zero Deposit Option







ZERO DEPOSIT OPTION AVAILABLE. Jan Forster Estates are delighted to offer this brand new 'Maidstone', located in the magnificent new development called West Meadows in Cramlington.

The ground floor consists of an entrance hall and a WC at the front of the property. From there, you'll find a reception room at the front, flooded with natural light and staircase leading to the first floor. There's a full integrated kitchen and dining area to the rear of the property featuring storage cupboard and French doors that open up to the garden, creating a seamless connection between indoor and outdoor spaces, perfect for entertaining. The first floor houses additional storage cupboard, 2 double bedrooms and 1 single bedroom which offer ample storage space. The master bedroom, which faces the front of the property, includes a luxury of an en-suite while the contemporary family bathroom completes the layout.

Living here means you can enjoy country walks at Northumberlandia, just minutes from your doorstep. As well as being a short drive or walk from Manor Walks shopping centre and Cramlington train station. With local amenities, close access to the A19 and A1 and schools rated 'Good' nearby, West Meadows is the perfect place for your family to call home.

\*Hyperoptic broadband pre-installed

\*Council Tax band TBC\*

Lomond on behalf of Lloyds Living, part of Lloyds Banking Group operates a growing portfolio of more than 3,000 professionally managed homes for rent, improving access to good value, quality, sustainable housing across the UK. Lloyds Living helps to support investment into local communities by building and renting homes that people want, in the places they are needed.

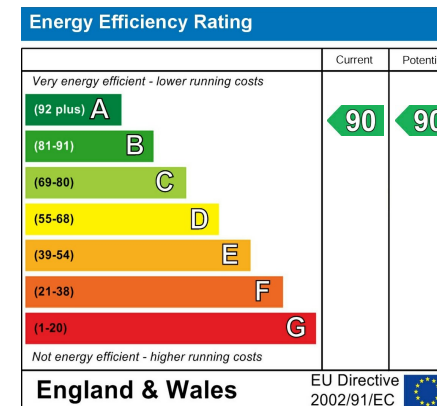
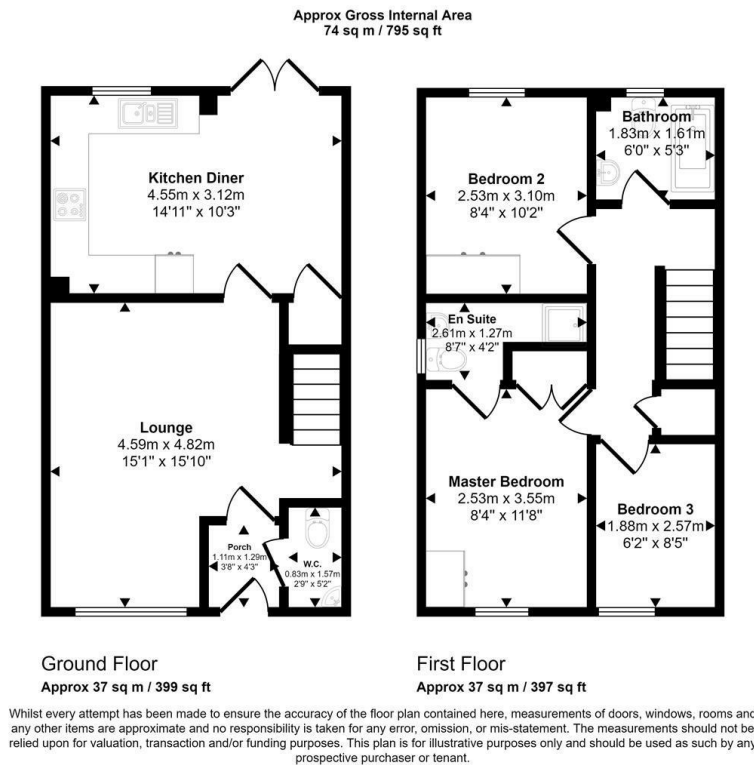
\*Internal CGIs are indicative and to be used as guidance only\*



Should you decide to rent a property, a completed Rental Application Form is required for each adult proposing to rent the property, along with 2 forms of identification, including verification of your Right To Rent in the United Kingdom and a **Holding Deposit Fee equivalent of one week's rent rounded down to the nearest £5.00**. This Holding Deposit will be off-set against the first month's rental payment received.

The Holding Deposit is non-refundable should you fail the Right To Rent checks, you provide misleading information, you withdraw from the property or you fail to take reasonable steps to enter into a tenancy within the agreed timescale. The Holding Deposit does not constitute the offer of acceptance of a tenancy until such time as successful referencing is completed and the Tenancy Agreement is signed and executed by both parties. We will liaise with you to agree on a start date for the tenancy.

Schedule 2 of the Tenant Fees Act 2019 – Treatment of the Holding Deposit – governs how we deal with the Holding Deposit. This Schedule applies where a Holding Deposit is paid to either a Landlord or Letting Agent in respect of a proposed tenancy of housing in England. In this Schedule, 'the deadline for agreement' means the fifteenth day of the period beginning with the day on which the Landlord or Letting Agent receives the Holding Deposit. Unless both parties agree otherwise, this Holding Deposit must be returned to you if it is decided by the Landlord or Letting Agent not to proceed with the tenancy after a Holding Deposit has been paid. The deposit must be returned to you no later than 7 days after a decision is made not to proceed.



## The difference between house and home

You may download, store and use the material for your own personal use and research. You may not republish, retransmit, redistribute or otherwise make the material available to any party or make the same available on any website, online service or bulletin board of your own or of any other party or make the same available in hard copy or in any other media without the website owner's express prior written consent. The website owner's copyright must remain on all reproductions of material taken from this website.

**Gosforth  
High Heaton  
Tynemouth**

**Property Management Centre**

**0191 236 2070  
0191 270 1122  
0191 257 2000  
0191 236 2680**