





- For Sale by Modern Auction
- Subject to Reserve Price
- The Modern Method of Auction
- Ground Floor
- Viewing Recommended
- T & C's Apply
- Buyers Fees Apply
- In Need Of Renovation
- Council Tax Band *A*
- Call For More Information





This two-bedroom ground floor flat is in need of renovation and is located on Philiphaugh, a popular street in Wallsend.

For sale by Modern Method of Auction: Starting Bid Price £45,000 plus Reservation Fee

This property is for sale by The Great North Property Auction powered by iam-sold.

The property is positioned close to local shops along with access to well-regarded schools and excellent travel links and is only a short walk away from the Metro station and local bus links, with ease of access into Newcastle City Centre.

Internally the property briefly comprises: - entrance hallway with storage, main double bedroom with bay window, second bedroom, lounge, kitchen and a bathroom/w.c. Externally there is a private yard to the rear.

Early viewings are recommended. For more information and to book a viewing please call our High Heaton team on 0191 270 1122.

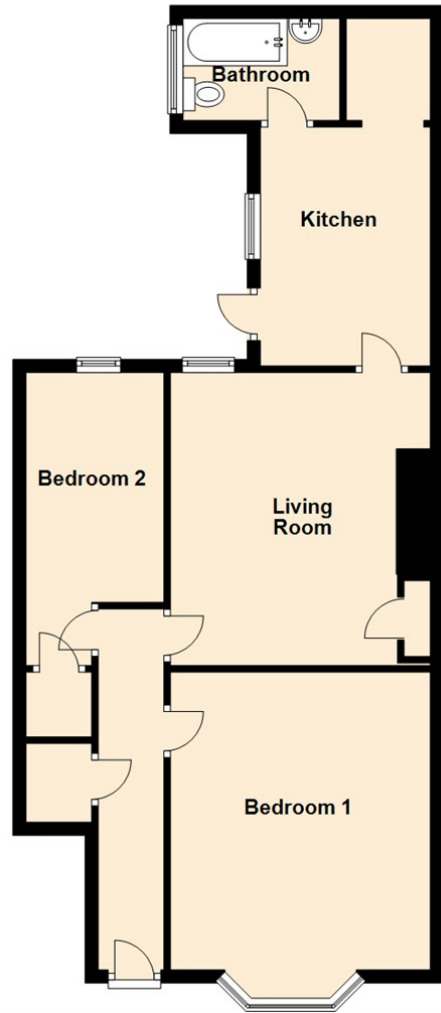
Tenure

The agent understands the property to be leasehold. However, this should be confirmed with a licenced legal representative.

Council Tax band *A*



Ground Floor



The difference between house and home

You may download, store and use the material for your own personal use and research. You may not republish, retransmit, redistribute or otherwise make the material available to any party or make the same available on any website, online service or bulletin board of your own or of any other party or make the same available in hard copy or in any other media without the website owner's express prior written consent. The website owner's copyright must remain on all reproductions of material taken from this website.

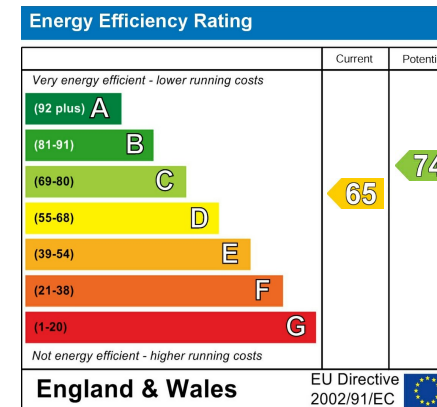
Lounge 14'7" x 12'11" (4.46 x 3.96)

Kitchen 11'11" x 8'5" (3.64 x 2.59)

Bedroom One 14'10" x 12'11" (4.53 x 3.96)

Bedroom Two 11'5" x 6'10" (3.50 x 2.10)

Auctioneer's Comments



Gosforth 0191 236 2070
Newcastle 0191 284 4050
High Heaton 0191 270 1122
Tynemouth 0191 257 2000
Low Fell 0191 487 0800
Property Management Centre 0191 236 2680



www.janforsterestates.com

