



Jan Forster
FOR SALE



- Popular Location
- Ground Floor
- Rear Yard
- Double Glazing
- Viewing Recommended
- Two Bedrooms
- Close To Amenities
- Gas Central Heating
- Council Tax Band *A*
- Call For More Information





** Video Tour on our YouTube Channel |
<https://youtu.be/eopqzitbtSc> **

Jan Forster Estates are delighted to bring to the market this well presented two-bedroom ground floor flat on the popular Malcolm Street, Heaton. An ideal home for the first-time buyer, investor, or downsizer alike.

The flat is conveniently located for access to a variety of local amenities such as shops, schools, activity centres, and more. It also gives ease of access to public transport facilities, including the Metro service and local bus routes, providing quick journeys into Newcastle city centre and surrounding areas.

Offered for sale with the benefit of no onward chain, the property briefly comprises: - bright and airy lounge with storage, fitted kitchen with integrated oven and hob, a modern three-piece bathroom WC, and two good-sized bedrooms.

Externally, there is a town garden to the front and a yard to the rear with shared access. The property further benefits from double glazing, gas central heating and ample storage.

Early viewings come highly recommended. For more information, please call our sales team on 0191 270 1122.

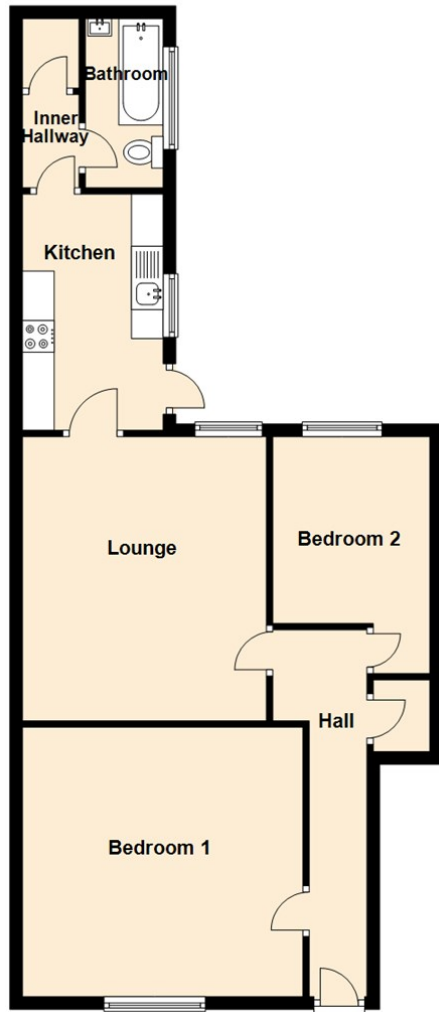
Tenure

The agent understands the property to be leasehold. However, this should be confirmed with a licenced legal representative.

Council Tax band *A*.



Ground Floor



The difference between house and home

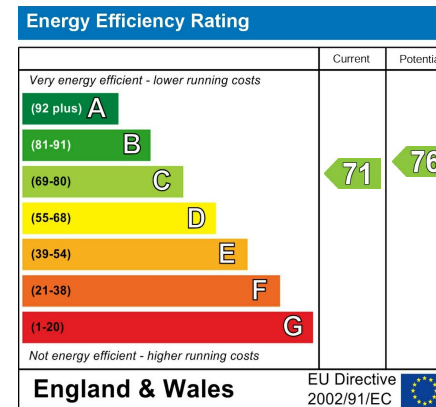
You may download, store and use the material for your own personal use and research. You may not republish, retransmit, redistribute or otherwise make the material available to any party or make the same available on any website, online service or bulletin board of your own or of any other party or make the same available in hard copy or in any other media without the website owner's express prior written consent. The website owner's copyright must remain on all reproductions of material taken from this website.

Lounge 14'7" x 12'8" (4.47 x 3.88)

Kitchen 12'2" x 7'3" (3.73 x 2.21)

Bedroom One 14'6" x 13'11" (4.42 x 4.26)

Bedroom Two 14'7" x 7'11" (4.45 x 2.43)



Gosforth	0191 236 2070
Newcastle	0191 284 4050
High Heaton	0191 270 1122
Tynemouth	0191 257 2000
Low Fell	0191 487 0800
Property Management Centre	0191 236 2680



www.janforsterstates.com

