





1 1 1

- Popular Location
- One Bedroom
- Close To Amenities
- Double Glazing
- Two Allocated Parking Spaces
- Open Plan Living
- Ground floor WC
- Gas Central Heating
- Leasehold
- Excellent Transport Links





\*\* Video Tour on our YouTube Channel |  
<https://youtu.be/FqkC98c4JSc> \*\*

Jan Forster Estates are delighted to present this one bedroom terraced house on Westbury Court, Longbenton. Providing living accommodation to the first floor, the property will appeal to a variety of buyers from first time buyers, downsizers and buy to let investors alike.

The property is situated in a highly sought after location, providing excellent access to local amenities, schools, and public transport links.

Internally the property briefly comprises to the ground floor; reception room come study and ground floor WC. To the first floor, there is a bright and airy lounge/dining room opening up to a stylish kitchen area with fitted wall and floor units and breakfast bar. There is also a good-sized bedroom with built-in wardrobes, and a three piece bathroom with shower over the bath. Externally, there is allocated parking for two vehicles as well as visitor parking.

Viewings are highly recommended on this property, which must be seen to appreciate the accommodation on offer. For more information and to book your viewing, please call our sales team on 0191 270 1122.

#### Tenure

The agent understands the property to be leasehold. However, this should be confirmed with a licenced legal representative.

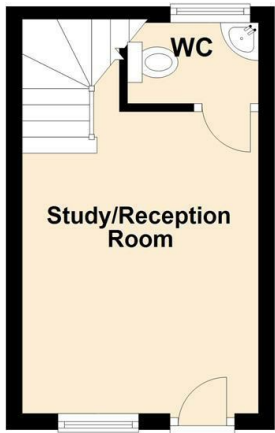
Council Tax band \*A\*.

Study/Reception Room 12'3" x 9'7" (3.74 x 2.93)

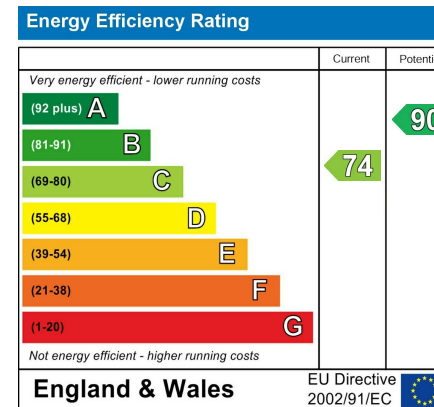
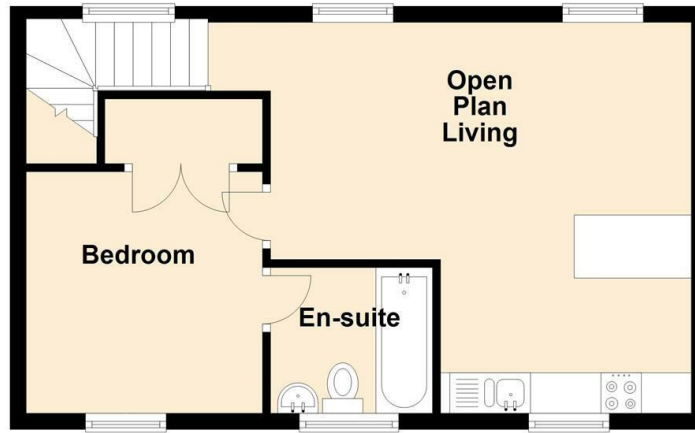
Living Area 16'6" x 17'1" (5.04 x 5.21)

Bedroom 9'6" x 9'7" (2.92 x 2.93)

Ground Floor



First Floor



## The difference between house and home

You may download, store and use the material for your own personal use and research. You may not republish, retransmit, redistribute or otherwise make the material available to any party or make the same available on any website, online service or bulletin board of your own or of any other party or make the same available in hard copy or in any other media without the website owner's express prior written consent. The website owner's copyright must remain on all reproductions of material taken from this website.



[www.janforsterestates.com](http://www.janforsterestates.com)

Gosforth	0191 236 2070
Newcastle	0191 284 4050
High Heaton	0191 270 1122
Tynemouth	0191 257 2000
Low Fell	0191 487 0800
Property Management Centre	0191 236 2680

