





- End Terrace House
- Off Street Parking
- Open Plan Living Area
- Ample Storage
- Unfurnished Basis
- Two Bedrooms
- Garden
- Ground Floor WC
- New Build Development
- Available April 2024





** Video Tour on our YouTube Channel |
<https://youtu.be/JC6DpU5vQMw> **

This newly built two bedroom end terraced house is situated on the new development of West Meadows, Cramlington. The property is available April 2024 on an unfurnished basis.

The accommodation briefly comprises to the ground floor:- hallway, open plan living area with kitchen area benefitting fitted units and patio doors leading to the rear garden, and ground floor WC. To the first floor, you have two good-sized bedrooms, both of which with built-in storage, and a three piece family bathroom WC with a shower over the bath. Externally there is a lawned garden to the rear and off-street parking to the front.

We anticipate an extremely high level of viewings on this charming property. To arrange yours please call our lettings team on 0191 270 1122.

Council Tax band *TBC*

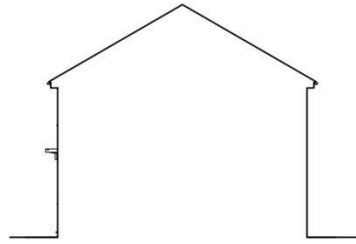




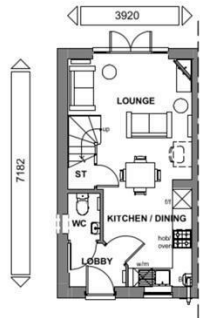
FRONT ELEVATION



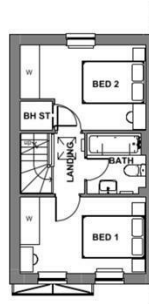
REAR ELEVATION



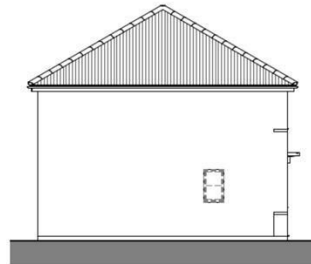
SIDE ELEVATION



GROUND FLOOR



FIRST FLOOR



SIDE ELEVATION

The difference between house and home

You may download, store and use the material for your own personal use and research. You may not republish, retransmit, redistribute or otherwise make the material available to any party or make the same available on any website, online service or bulletin board of your own or of any other party or make the same available in hard copy or in any other media without the website owner's express prior written consent. The website owner's copyright must remain on all reproductions of material taken from this website.

Energy Efficiency Rating		
	Current	Potential
Very energy efficient - lower running costs		97
(92 plus) A		
(81-91) B	83	
(69-80) C		
(55-68) D		
(39-54) E		
(21-38) F		
(1-20) G		
Not energy efficient - higher running costs		
England & Wales	EU Directive 2002/91/EC	



www.janforsterestates.com

Gosforth

0191 236 2070

Newcastle

0191 284 4050

High Heaton

0191 270 1122

Tynemouth

0191 257 2000

Low Fell

0191 487 0800

Property Management Centre

0191 236 2680

