





- Six Bedrooms
- Excellent Location
- No Upper Chain
- Close to the Freeman Hospital





** Video Tour on Our YouTube Channel |
<https://youtu.be/Y1nkGOO0s0A> **

Offered for sale with no upper chain this six bedroom maisonette located close to all local amenities, excellent transport links and the Freeman hospital.

The property briefly comprises:- entrance hallway, bedroom one, bedroom two, bedroom three, separate WC, bathroom and spacious communal lounge, dining area and kitchen. To the second floor there are a further three bedrooms, a separate WC and shower room. The property also benefits from gas central heating and double glazing.

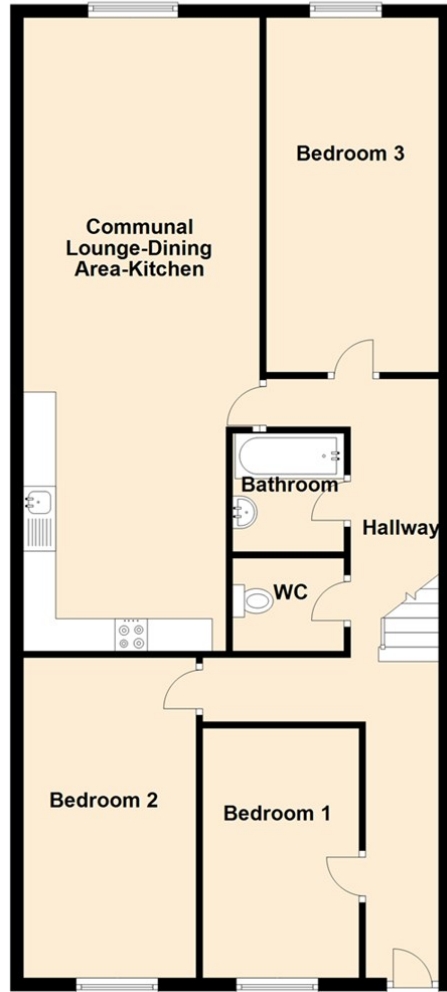
Early viewings come highly recommended. For more information please call our High Heaton branch on 0191 270 1122.

Covid-19 Viewing Guidelines

For the safety of our clients, yourselves and our staff we are currently only allowing viewings to go ahead if viewers wear appropriate PPE (masks and gloves). Social distancing rules must also be adhered to at all times. Where possible we will encourage vendors to leave the property while the viewing is going ahead. We also will only allow 2 people to view a property at any one time. We may share contact numbers where requested by NHS to prevent the spread of Covid-19.



Ground Floor



The difference between house and home

You may download, store and use the material for your own personal use and research. You may not republish, retransmit, redistribute or otherwise make the material available to any party or make the same available on any website, online service or bulletin board of your own or of any other party or make the same available in hard copy or in any other media without the website owner's express prior written consent. The website owner's copyright must remain on all reproductions of material taken from this website.

Communal Lounge Kitchen 11'10" x 32'0" (3.63 x 9.76)

Bedroom One 7'10" x 12'7" (2.41 x 3.86)

Bedroom Two 8'8" x 16'3" (2.65 x 4.96)

Bedroom Three 18'6" x 8'8" (5.64 x 2.65)

Bedroom Four 11'11" x 10'3" (3.64 x 3.14)

Bedroom five 11'11" x 10'3" (3.64 x 3.14)

Bedroom Six 16'0" x 10'3" (4.90 x 3.14)

Energy Efficiency Rating		
	Current	Potential
<i>Very energy efficient - lower running costs</i>		
(92 plus) A		
(81-91) B		
(69-80) C	76	77
(55-68) D		
(39-54) E		
(21-38) F		
(1-20) G		
<i>Not energy efficient - higher running costs</i>		
England & Wales	EU Directive 2002/91/EC	

Gosforth 0191 236 2070
Newcastle 0191 284 4050
High Heaton 0191 270 1122
Tynemouth 0191 257 2000
Low Fell 0191 487 0800
Property Management Centre 0191 236 2680



www.janforsterestates.com

