



26 Beach View Crescent

Wembury, Plymouth, PL9 0HJ

£685,000



26 Beach View Crescent

Wembury, Plymouth, PL9 0HJ

£685,000



BEACH VIEW CRESCENT, WEMBURY, PL9 0HU

ACCOMMODATION

ENTRANCE PORCH

7'9 x 6'3 (2.36m x 1.91m)

uPVC double-glazed entrance porch with full-height windows. Slate floor. Access through to the hallway.

HALLWAY

13'11 x 7' (4.24m x 2.13m)

Oak flooring. Inset ceiling spotlights. Staircase with hard wood balustrade and glass providing access up and down to the remaining accommodation.

OPEN-PLAN LIVING ROOM & KITCHEN

28'4 x 26'8 max dimensions, L-shaped room (8.64m x 8.13m max dimensions, L-shaped room)

An open-plan 'L-shaped' room with oak flooring throughout. Triple aspect with windows to the front and side elevations and to the rear, bi-folding doors and patio door providing fabulous views and access to outside. In the lounge area there is a chimney breast and wood burning stove. The kitchen area is fitted with a range of matching units with white gloss fascias and contrasting polished granite work surfaces. Matching island with breakfast bar. Inset stainless-steel one-&-a-half bowl sink unit with a mixer tap. Built-in Bosch double oven and grill. Bosch microwave. Inset Bosch hob with a stainless-steel and glass cooker hood above and a matching glass splash-back. Integral Bosch dishwasher. Integral Bosch full-height fridge. Inset ceiling spotlights.

UTILITY ROOM

7'3 x 5'4 (2.21m x 1.63m)

Fitted cabinets. Stainless-steel single drainer sink unit. Space and plumbing for washing machine. Space for freezer.

Wall-mounted Vaillant boiler. Oak flooring. Window to the side elevation.

BEDROOM THREE

13' x 9' (3.96m x 2.74m)

Window to the front elevation. Inset ceiling spotlights. Oak flooring.

TOP FLOOR LANDING

Storage cupboard. Oak flooring. Doorway opening into bedroom one.

BEDROOM ONE

16'5 x 14'8 (5.00m x 4.47m)

Oak flooring throughout. French doors to the rear opening onto a glass Juliette-style balcony providing magnificent views down the valley towards the sea and the Mewstone. Additional Velux-style skylights to the side elevation. Inset ceiling spotlights. Eaves storage. Doorway opening into the ensuite bathroom.

ENSUITE BATHROOM

8'1 x 7'9 (2.46m x 2.36m)

Comprising a bath with a mixer tap shower attachment, basin with cabinet beneath and wc. Chrome towel rail/radiator. Mirror. Partly-tiled walls. Tiled floor. Velux-style skylight to the front elevation.

LOWER LANDING

Providing access to the remaining accommodation. Under-stairs storage cupboards.

BEDROOM TWO

15'11 x 12'1 (4.85m x 3.68m)

Large bedroom with oak flooring. Dual aspect with a window to the side elevation and full-height windows and door to the rear opening to outside. Inset ceiling spotlights.

BEDROOM FOUR

11'10 x 9'1 (3.61m x 2.77m)

Window to the side elevation. Cupboard housing the consumer unit. Oak flooring. Inset ceiling spotlighting.

SHOWER ROOM

8'6 x 5'9 (2.59m x 1.75m)

Comprising a large walk-in shower with fixed glass screen and an additional rinsing attachment, basin with a mirrored cabinet above and wc. Chrome towel rail/radiator. Fully-tiled walls. Tiled floor. Inset ceiling spotlights. Obscured window to the side elevation.

OUTSIDE

To the front a gravel driveway provides plentiful off-road parking. Gardens to the side and rear elevations laid to patio and lawn and enclosed by hedging. To the side there is a large shed with power set onto a patio. To the rear there is a sheltered patio area with an outside shower and outside light. A large decking area with glass and stainless-steel balustrades provides an excellent outside entertainment area with outside lighting and has fantastic views to the sea and Mewstone. There is pedestrian access onto Church Road which in turn leads down to the beach.

COUNCIL TAX

South Hams District Council

Council tax band E

SERVICES

The property is connected to all the mains services: gas, electricity, water and drainage.

Wembury

Wembury is a sought-after coastal village with a vibrant community situated in the west of the South Hams between the Yealm Estuary and Plymouth Sound within the South Devon area of outstanding natural beauty. Wembury has a beach, well-known for its excellent surfing and rock pooling, which is on the South West Coast Path, as are the riding stables. Close-by is Mount Batten which has a marina and watersports centre. Within Wembury there is a pub and church together with local shop, beauty salons and a sought-after primary school. More comprehensive shopping facilities can be found in Plymstock which is a short drive away from Plymouth city centre with a rail link to London Paddington. There is also a local golf course at Staddon Heights.



Road Map



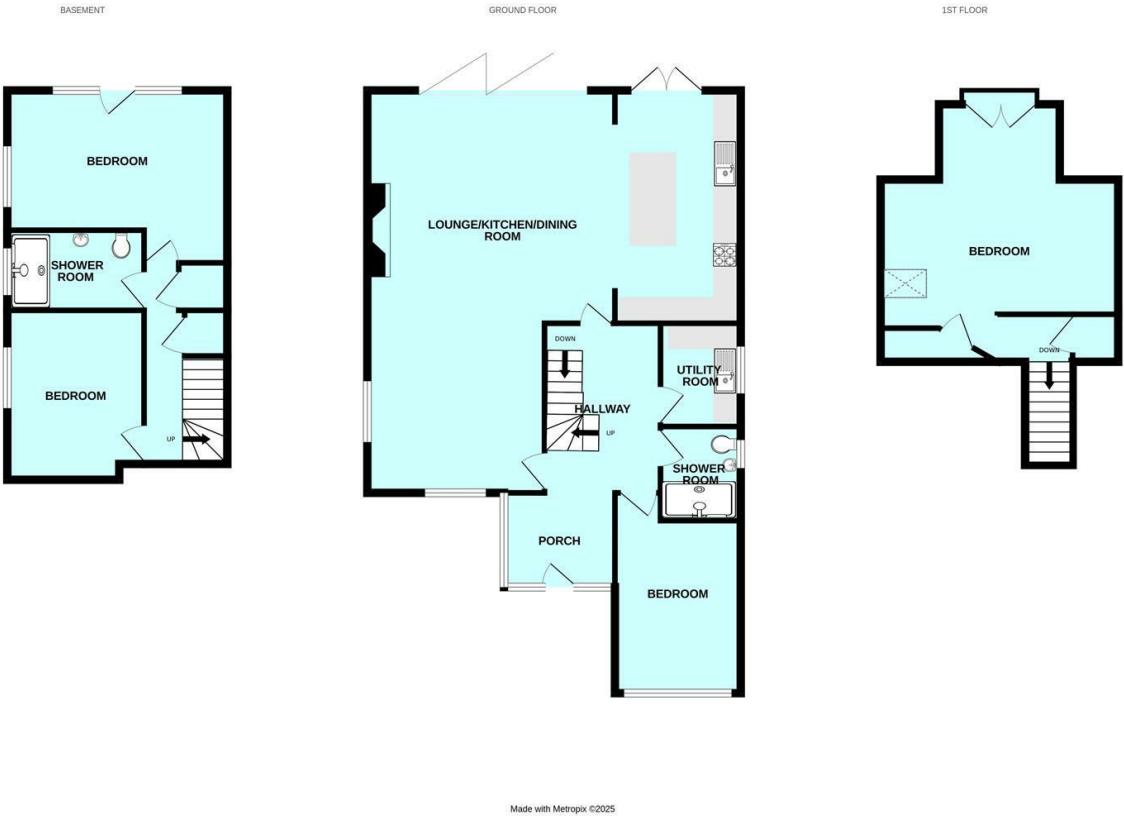
Hybrid Map



Terrain Map



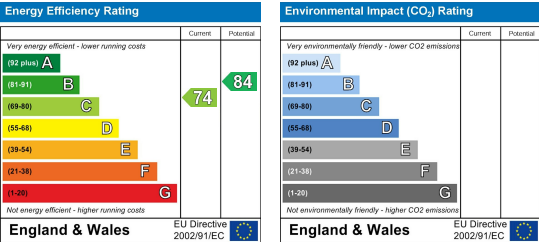
Floor Plan



Viewing

Please contact our Plymouth Office on 01752 401128 if you wish to arrange a viewing appointment for this property or require further information.

Energy Efficiency Graph



These particulars, whilst believed to be accurate are set out as a general outline only for guidance and do not constitute any part of an offer or contract. Intending purchasers should not rely on them as statements of representation of fact, but must satisfy themselves by inspection or otherwise as to their accuracy. No person in this firm's employment has the authority to make or give any representation or warranty in respect of the property.