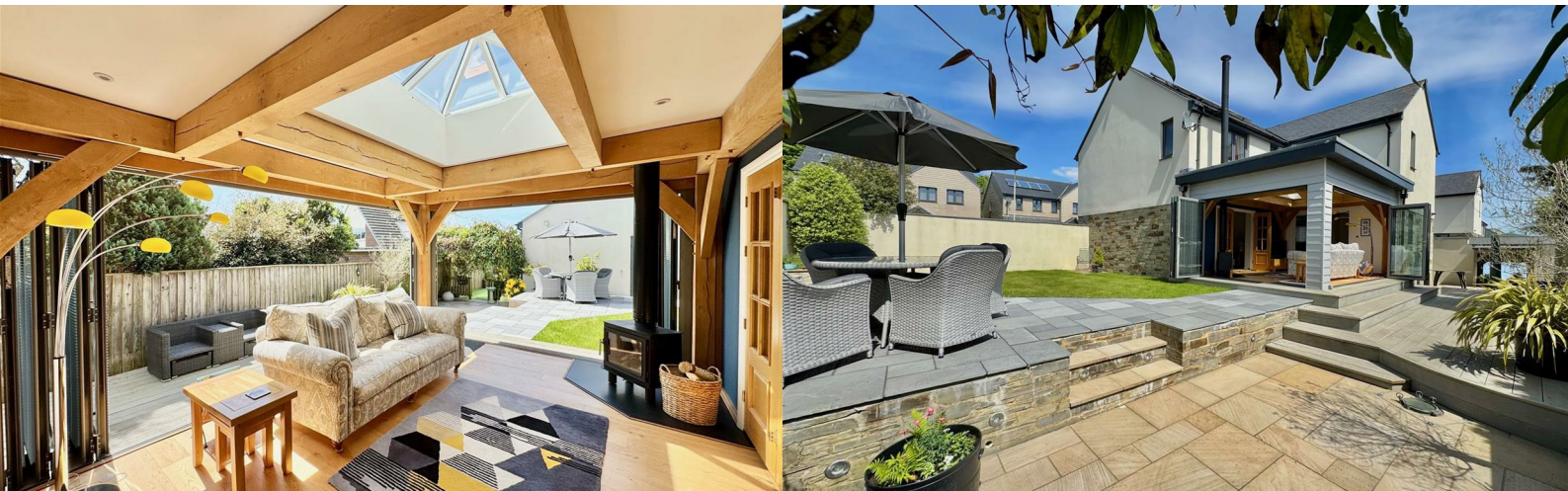




3 Lord Morley Way

Elburton, Plymouth, PL9 8AF

£700,000



3 Lord Morley Way

Elburton, Plymouth, PL9 8AF

£700,000



LORD MORLEY WAY, ELBURTON, PL9 8AF

DESCRIPTION

An innovative layout and clever use of space make this extended detached house a perfect family home. Through double doors in the hallway you enter into a bright, airy living room with oak bi-fold doors opening into a Carpenter Oak orangery with 2 sets of bi-fold doors opening onto the gardens. This room has under-floor heating and a wood-burning stove which brings the landscaped gardens into the home and vice versa. The orangery connects to a spacious kitchen/breakfast room through an open plan archway and the utility room is conveniently located off the kitchen/breakfast area. There is also a separate dining room and practicalities such as the downstairs cloakroom/wc and under-stairs storage cupboard. To the first floor there are 4 double bedrooms, 2 of which benefit from ensuite shower rooms, and a main family bathroom serving the remaining 2 double bedrooms. The house benefits from anthracite grey uPVC double-glazed windows and gas central heating. The gardens are predominately southwest-facing and have been landscaped to include a composite grey oak-effect deck, a patio area with steps leading down to a further sunken patio with an enclosed artificial grass play area for children and a lawned garden with a children's playhouse. To the front there are gardens enclosed by railings, laid to artificial lawn for ease-of-maintenance, and colourful flower beds. A row of evergreen oak trees forms a privacy screen. The house benefits from an over-sized double garage with a remote door and an extra wide, private drive with space for 3 cars. The house is situated in a desirable location, close to Dunstone woods, on a private cul-de-sac of 16 detached executive homes.

ACCOMMODATION

There is a pitched roof, pillared, covered entrance porch with a composite wide double-glazed front door into the entrance hall.

ENTRANCE HALL

High-quality laminate oak-effect floor which runs through to the kitchen/breakfast room. Stairs rising to the first floor with solid wood banister rails and newel posts. Under-stairs storage cupboard with light. Telephone point. Electric fuse box. Solar panels meter. Radiator. Smoke detector. Spot lighting. Double French doors opening to the living room.

LIVING ROOM

21'8 x 12'1 (6.60m x 3.68m)

uPVC double-glazed window overlooking the front. Silestone fireplace with gas fire inset. 2 radiators. 2 TV points. Bi-fold oak doors opening to the conservatory/orangery.

CONSERVATORY/ORANGERY

16' x 12' (4.88m x 3.66m)

This is a room that complements the garden perfectly, with a substantial Carpenter Oak timber frame, 2 sets of powder-coated aluminium bi-fold doors with fitted blinds and a lantern making this a very light, bright,

southwest-facing room with under-floor heating and wood-burning stove set onto a polished slate hearth.

DINING ROOM

11'4 x 10'10 (3.45m x 3.30m)

A double aspect room with 2 uPVC double-glazed windows. Radiator. TV point.

KITCHEN/BREAKFAST ROOM

22'5 x 14'6 (6.83m x 4.42m)

The kitchen area is fitted with dual colour high-gloss units with a matching breakfast bar island with storage units and drawers below. The kitchen has double wall cupboards, base cupboards and drawers with silestone work surfaces and up-stands with integrated one-&-a-half drainer sink unit and mixer tap with spray facility. Over the sink there is a uPVC double-glazed window. Integrated 5-ring induction hob with matching silestone splash-back and extractor canopy over. Built-in double oven. Built-in fridge/freezer and dishwasher with matching door fronts. The island unit has 4 matching colour-coded breakfast stools and there is a good-sized family seating area for a breakfast table and chairs with an archway opening into the conservatory/orangery. The breakfast area has a uPVC double-glazed window. TV point. Door to the utility room.

UTILITY ROOM

7'8 x 5'9 (2.34m x 1.75m)

Matching units to the kitchen with a built-in washer/dryer. Cupboard housing the Worcester gas boiler (August 2019) and programmer serving the central heating and domestic hot water. Radiator. uPVC double-glazed window. Silestone work surface and upstand with integrated sink unit and mixer tap.

DOWNSTAIRS CLOAKROOM

Half-tiled walls. Tiled floor. Fitted with a 2-piece white suite comprising low-level wc and pedestal wash handbasin with a mixer tap. Radiator.

FIRST FLOOR LANDING

Galleried landing with solid wood newel posts and balustrades. Built-in airing cupboard housing the unvented hot water cylinder. Radiator. Hatch with retractable aluminium ladder to the fully-insulated, part-boarded roof space with light.

BEDROOM ONE

14'6 x 13'4 (4.42m x 4.06m)

Dual aspect with 2 uPVC double-glazed windows. Radiator. 2 TV points. Telephone point.

ENSUITE SHOWER ROOM

Half-tiling to the walls and floor. Fully-tiled shower cubicle. Fitted with a 3-piece suite comprising double shower with shower rose and hose, low-level wc and pedestal wash handbasin with mixer tap. Chrome heated towel rail. Spot lighting. Shaver point. uPVC obscured-glass double-glazed window.

Tel: 01752 401128

BEDROOM TWO

12'7 x 11'5 (3.84m x 3.48m)

Dual aspect with 2 uPVC double-glazed windows and views over Dunstone woods. Built-in double wardrobe with sliding door. Radiator. TV point.

BEDROOM THREE

11'10 x 10'6 (3.61m x 3.20m)

uPVC double-glazed window. Built-in double wardrobe with sliding door. Radiator. TV point.

ENSUITE SHOWER ROOM

Half-tiled walls and floor. Fully-tiled shower cubicle. Fitted with a 3-piece white suite comprising double shower cubicle, pedestal wash handbasin with mixer tap and low-level wc. Chrome heated towel rail. Spot lighting. uPVC obscured-glass double-glazed window.

BEDROOM FOUR

11'11 x 10'6 (3.63m x 3.20m)

Double wardrobe with sliding doors. Dual aspect room with 2 uPVC double-glazed windows. Radiator.

FAMILY BATHROOM

Fully-tiled to walls and floor. Fitted with a 3-piece white suite comprising panel bath with mixer tap and shower head attachment, safety glass shower screen, pedestal wash handbasin with mixer tap and low-level wc. Chrome heated towel rail. Spot lighting. uPVC obscured-glass double-glazed window.

OUTSIDE

To the front of the property there are gardens enclosed by railings, laid to artificial grass for ease-of-maintenance, with colourful beds of flowers and shrubs and a row of evergreen oaks providing a screen to the rear garden. The south-facing rear gardens are fully-enclosed by solid walls and featherboard timber fencing with a good-sized lawned area including a children's playhouse, patio with steps down to a sunken patio and pergola and composite grey oak-effect decking, which is a low-maintenance,

weatherproof, non-slip deck. From the sunken patio there is a gate to an enclosed children's play area laid to artificial lawn, off which there is a garden storage area. To the side of the property there is a further area laid to patio and decorative stone chippings, where there is a log store and further storage. The sunken patio and decking feature floor-level spotlighting. From the garden there is a courtesy door to the over-sized double garage. Private drive providing parking for at least 3 cars.

OVER-SIZED DOUBLE GARAGE

Ample power points and lighting. Overhead loft storage with retractable aluminium ladder. Remote up-&-over double door. To the front of the garage there is a private driveway with parking for 3 cars.

COUNCIL TAX

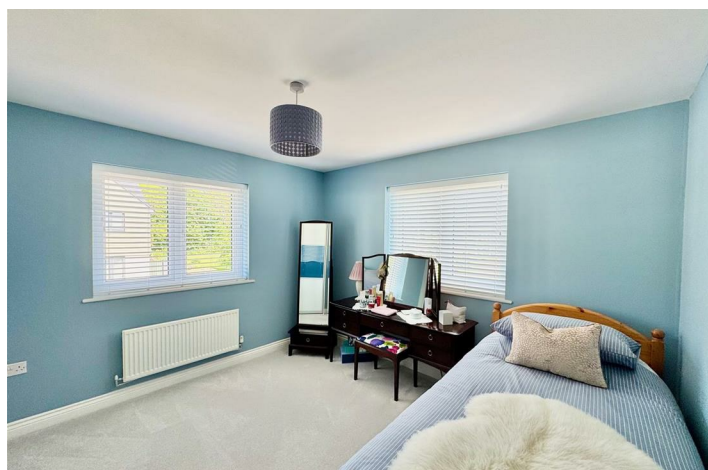
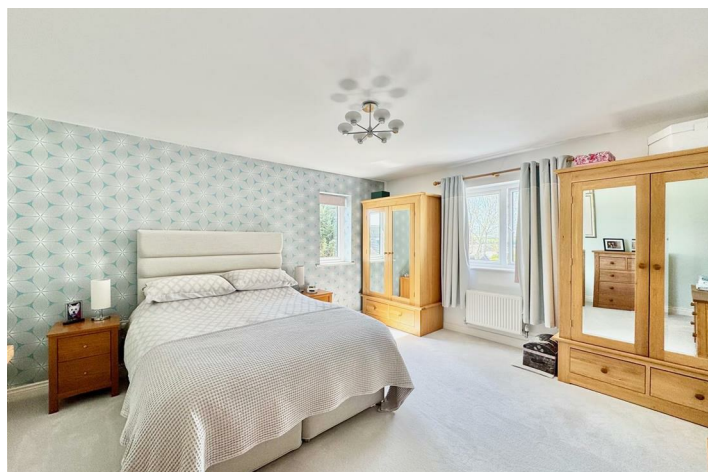
Plymouth City Council
Council tax band F

SERVICES

The property is connected to all the mains services: gas, electricity, water and drainage.

AGENT'S NOTE

There is an annual management fee of £512.13 to cover the maintenance of the communal areas.



Road Map



Hybrid Map



Terrain Map



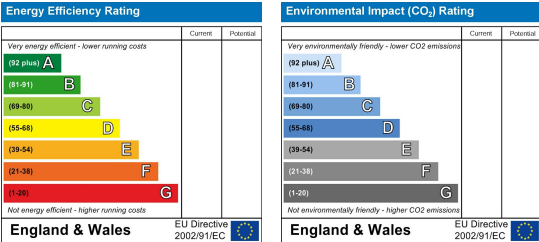
Floor Plan



Viewing

Please contact our Plymstock Office on 01752 401128 if you wish to arrange a viewing appointment for this property or require further information.

Energy Efficiency Graph



These particulars, whilst believed to be accurate are set out as a general outline only for guidance and do not constitute any part of an offer or contract. Intending purchasers should not rely on them as statements of representation of fact, but must satisfy themselves by inspection or otherwise as to their accuracy. No person in this firm's employment has the authority to make or give any representation or warranty in respect of the property.