



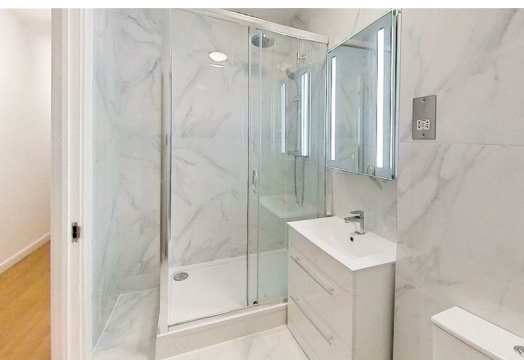
New Compton Street

London, WC2H 8DF

£3,000 Per month



Stylish split-level two-bed in Covent Garden. Bright reception, separate kitchen, modern bathroom. Lift access. Furnished or unfurnished. Prime location near Soho.



Set between Tottenham Court Road and Shaftesbury Avenue, this beautifully refurbished split-level apartment offers the best of London living.

The first floor welcomes you with a bright, airy reception and a separate, fully fitted kitchen. Upstairs features two spacious bedrooms and a sleek, newly refurbished bathroom. With wooden flooring throughout and fresh carpets on the stairs, the home blends comfort and sophistication.

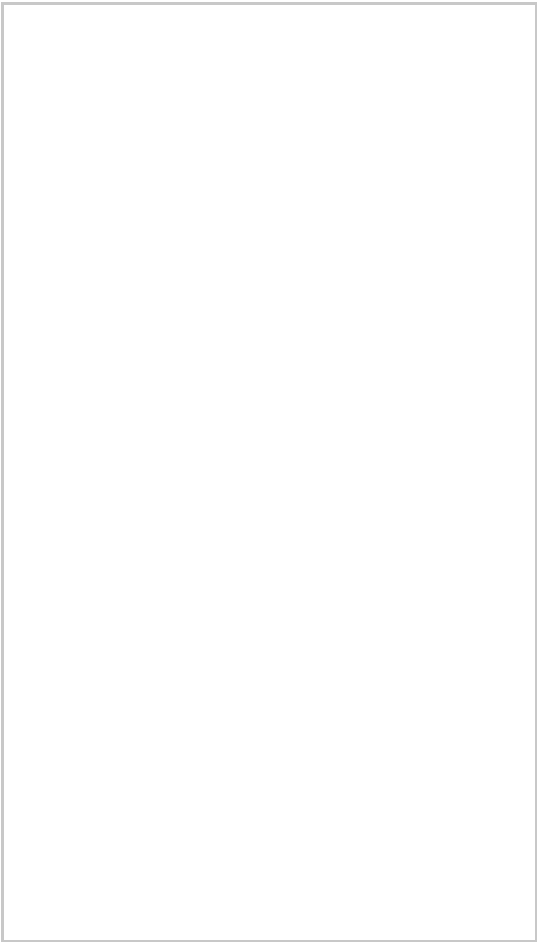
Serviced by a lift, the property is moments from Covent Garden and Soho’s vibrant restaurants, bars, and theatres. Available furnished or unfurnished.

A prime opportunity in a prime location – contact us today to arrange a viewing.

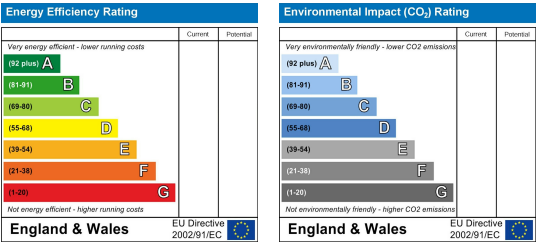
Area Map



Floor Plans



Energy Efficiency Graph



These particulars, whilst believed to be accurate are set out as a general outline only for guidance and do not constitute any part of an offer or contract. Intending purchasers should not rely on them as statements of representation of fact, but must satisfy themselves by inspection or otherwise as to their accuracy. No person in this firms employment has the authority to make or give any representation or warranty in respect of the property.