



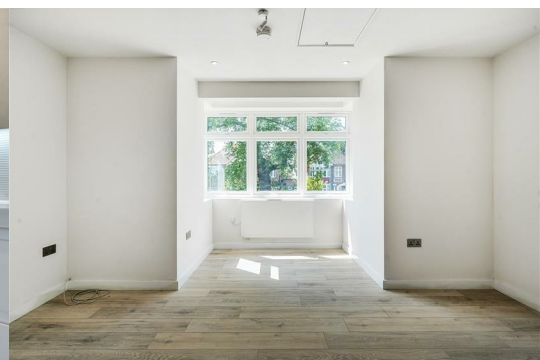
Gunnersbury Avenue

London, W5 3QL

£2,500 Per month



Modern 2-bed, 2-bath apartment with spacious open-plan living and bay windows – finished to a high standard in Ealing Common.



High-Spec 2-Bed, 2-Bath Apartment in Prime Ealing Common Location

Set within an exceptional new development in Ealing Common, this beautifully finished two-bedroom, two-bathroom apartment combines modern design with comfort and space.

The apartment features a generous open-plan kitchen/living area, enhanced by elegant bay windows that flood the room with natural light. Both bedrooms are well-sized, with the principal benefiting from an en-suite shower room. With stylish finishes throughout and thoughtful layout, this apartment is perfect for professional sharers, couples, or small families.

Key Features:

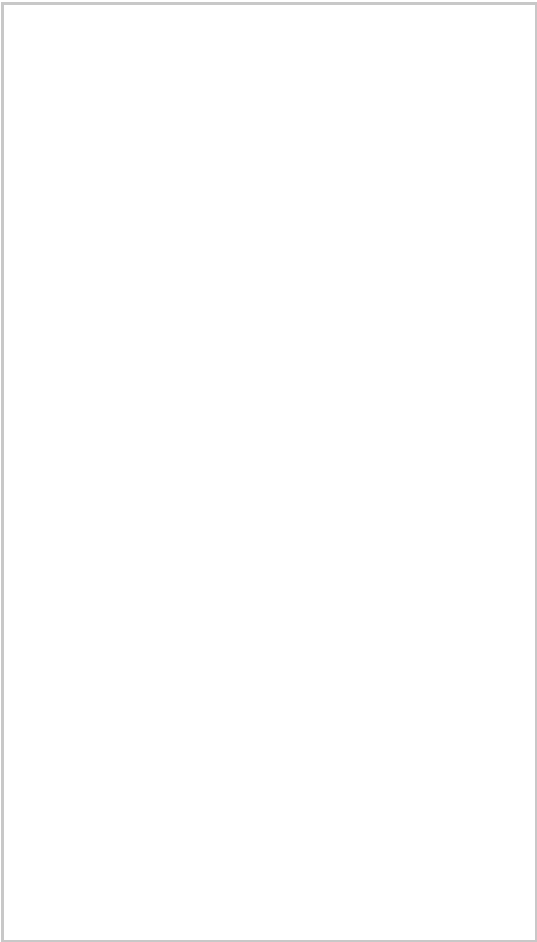
- Two double bedrooms, one with en-suite
- Two modern bathrooms
- Large open-plan kitchen/living area with bay windows
- Integrated appliances and high-spec finish throughout
- Bright, airy, and ready to move in
- Moments from Ealing Common station and local amenities

This apartment offers an outstanding lifestyle in a sought-after location – early viewing is highly recommended.

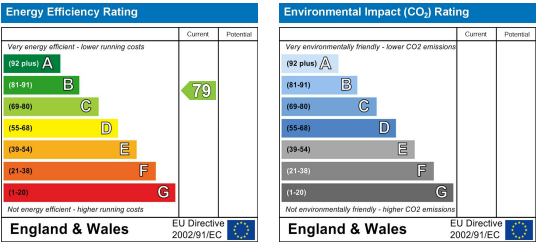
Area Map



Floor Plans



Energy Efficiency Graph



These particulars, whilst believed to be accurate are set out as a general outline only for guidance and do not constitute any part of an offer or contract. Intending purchasers should not rely on them as statements of representation of fact, but must satisfy themselves by inspection or otherwise as to their accuracy. No person in this firms employment has the authority to make or give any representation or warranty in respect of the property.