



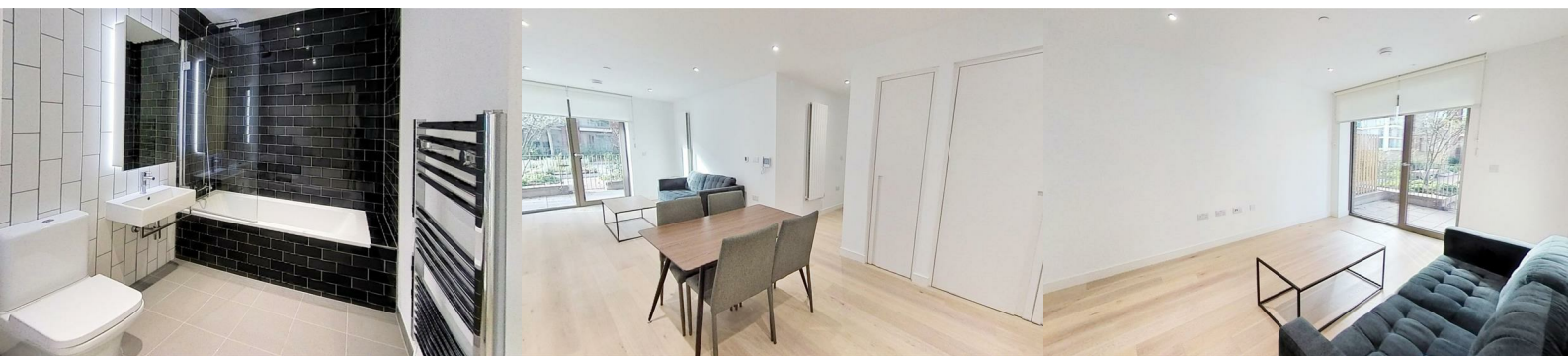
## Royal Crest Avenue

London, E16 2TF

**£2,500 Per month**



A stylish two-bedroom apartment at Royal Wharf featuring a private patio garden, spacious open-plan living, and access to landscaped communal gardens, with easy transport links to Canary Wharf and London City Airport.



Experience urban luxury in this stylish two-bedroom apartment located within the prestigious Royal Wharf development. Featuring two spacious double bedrooms, two elegant bathrooms, and a generous open-plan reception area, this apartment is perfect for both relaxation and entertaining.

A private rear patio garden, accessible from both the reception and main bedroom, offers a peaceful outdoor retreat. The development also boasts a landscaped communal garden with stunning river views, as well as 24-hour concierge and security services.

With high-quality furnishings throughout, this recently built apartment offers a contemporary and comfortable living experience. Royal Wharf's location provides easy access to Pontoon Dock DLR station, Canary Wharf, and London City Airport.

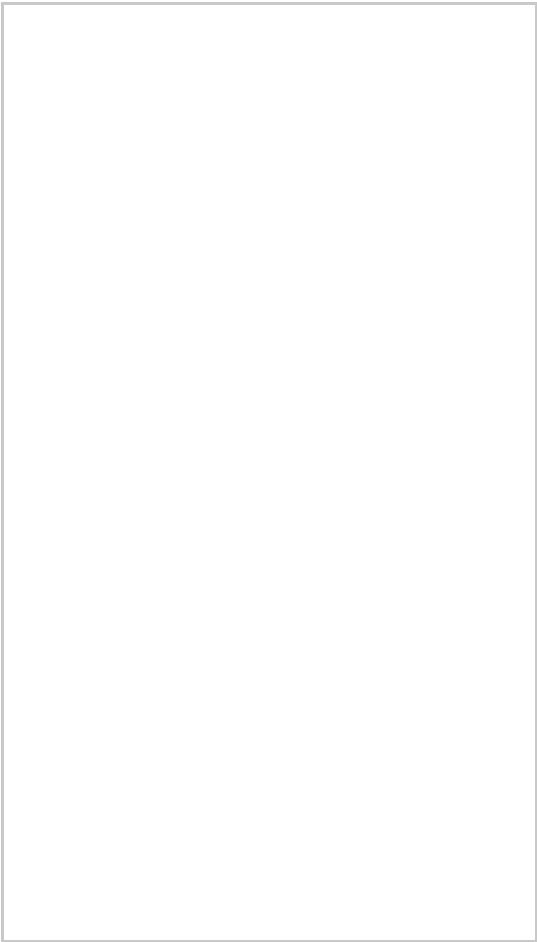
Book a viewing today to experience the best of sophisticated living at Royal Wharf.

For details on broadband and mobile coverage, visit the Ofcom website.

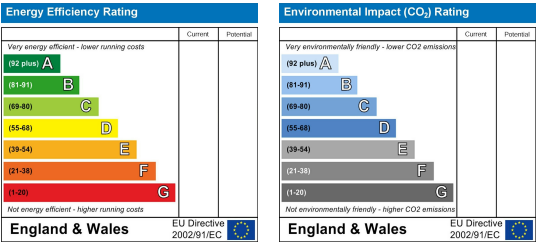
Area Map



Floor Plans



Energy Efficiency Graph



These particulars, whilst believed to be accurate are set out as a general outline only for guidance and do not constitute any part of an offer or contract. Intending purchasers should not rely on them as statements of representation of fact, but must satisfy themselves by inspection or otherwise as to their accuracy. No person in this firms employment has the authority to make or give any representation or warranty in respect of the property.