



£3,500 Per month

2

2

1



£3,500 Per month

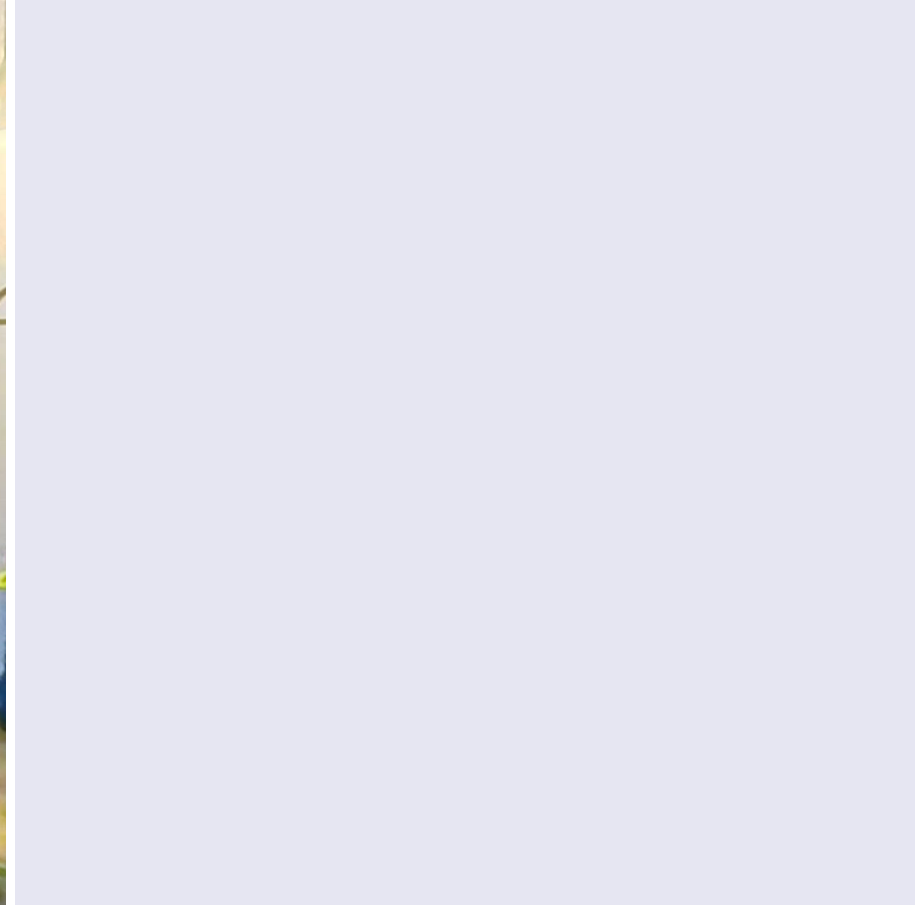
# Banner Street

London, EC1Y 8JU

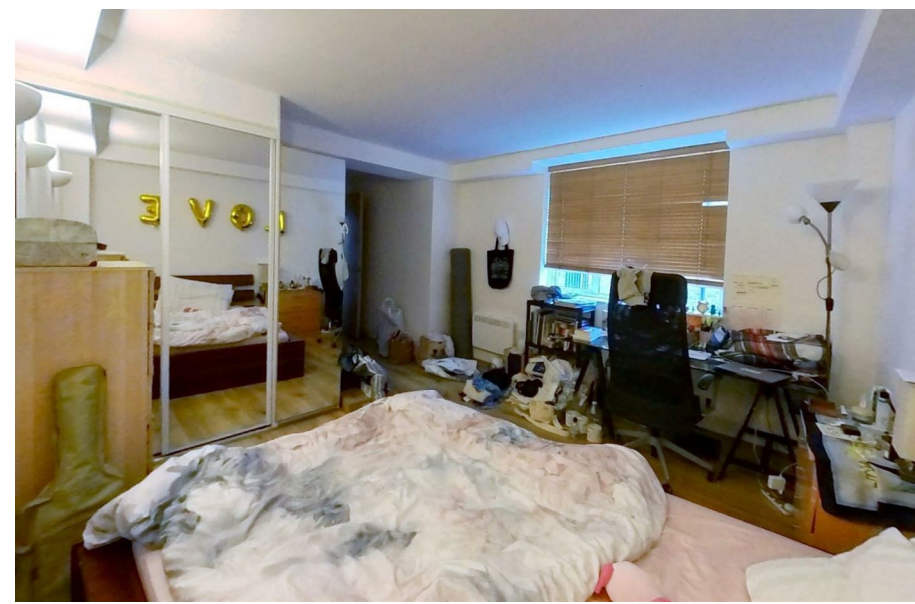
- EPC Rating : C
- Council Tax Band : F (Islington)
- Two bathrooms
- Two double bedrooms
- Juliet balcony
- Furnished
- Great location
- Lift

EPC RATING : C | Excellent location | TWO BATHROOMS | Lift access | JULIET BALCONY | Large Living Room | Separate Kitchen | Council Tax Band : F | Available September 2023 |





Directions

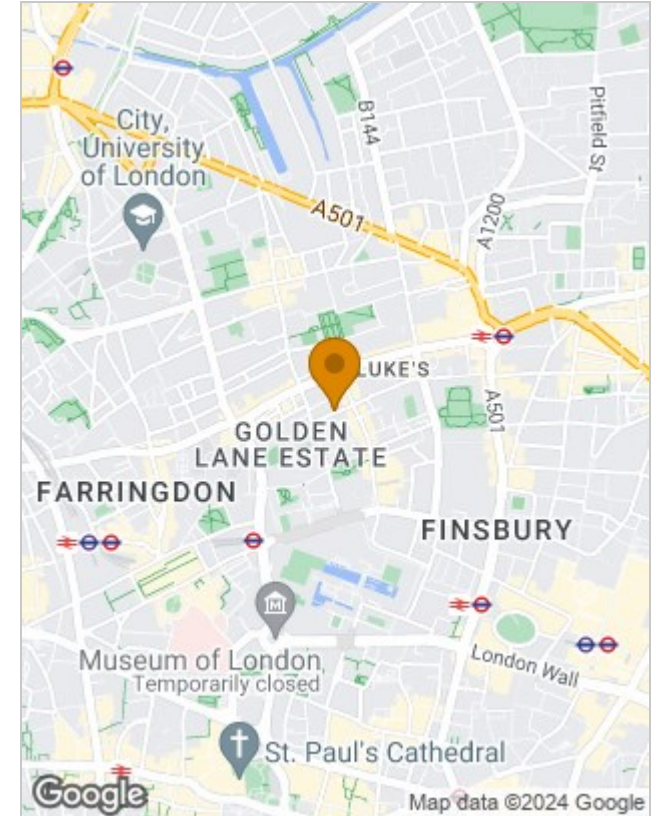




## Floor Plans



## Location Map



## Energy Performance Graph

Energy Efficiency Rating		Environmental Impact (CO <sub>2</sub> ) Rating	
	Current	Potential	
<i>Very energy efficient - lower running costs</i>			
(92 plus) <b>A</b>			<i>Very environmentally friendly - lower CO<sub>2</sub> emissions</i>
(81-91) <b>B</b>			(81-91) <b>B</b>
(69-80) <b>C</b>			(69-80) <b>C</b>
(55-68) <b>D</b>			(55-68) <b>D</b>
(39-54) <b>E</b>			(39-54) <b>E</b>
(21-38) <b>F</b>			(21-38) <b>F</b>
(1-20) <b>G</b>			(1-20) <b>G</b>
<i>Not energy efficient - higher running costs</i>			
<b>England &amp; Wales</b>		EU Directive 2002/91/EC	

## Viewing

Please contact our London Office on 020 7856 0368 if you wish to arrange a viewing appointment for this property or require further information.

The particulars are set out as a general outline only for the guidance of intended purchasers or lessees, and do not constitute, any part of a contract. Nothing in these particulars shall be deemed to be a statement that the property is in good structural condition or otherwise nor that any of the services, appliances, equipment or facilities are in good working order. Purchasers should satisfy themselves of this prior to purchasing.