



**£700 Per week**

2

2

1

B



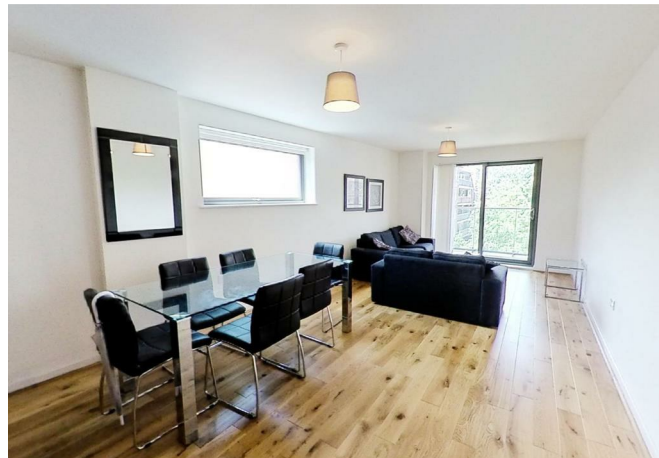
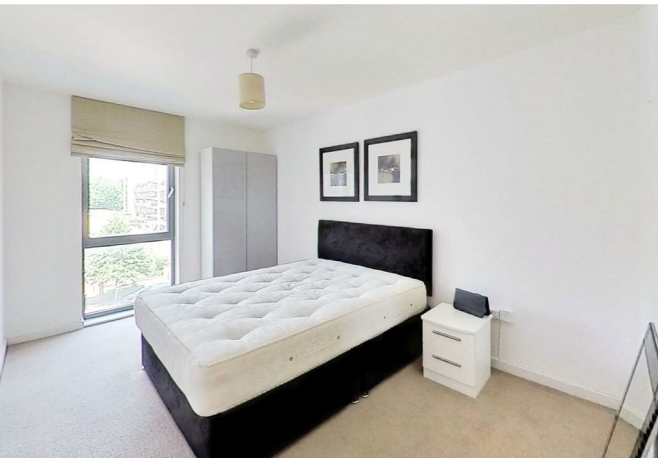
£700 Per week

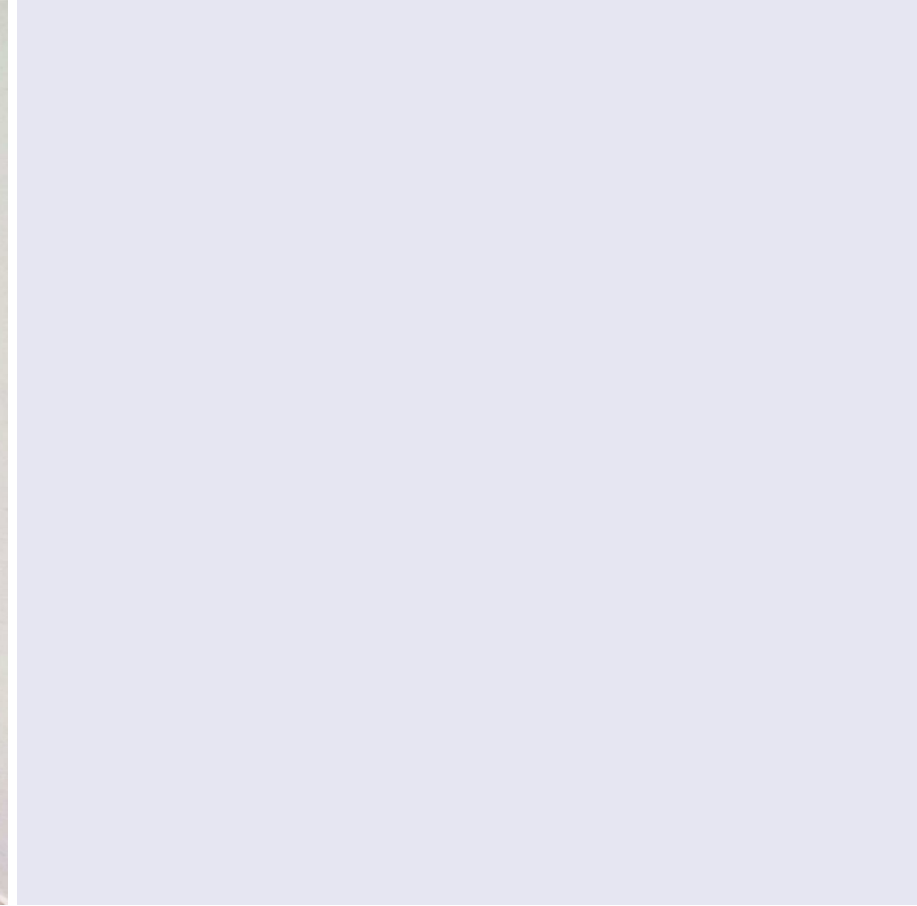
# Crowder Street

London, E1 0EZ

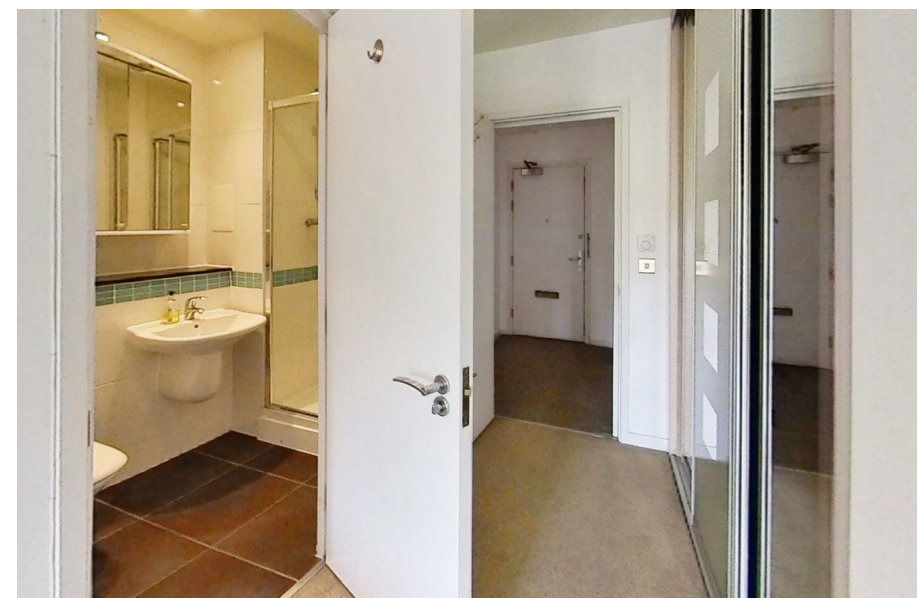
- Lift access
- Private balcony
- Two generous bedrooms
- EPC Rating : B
- Shadwell DLR
- Open plan reception
- Two bathrooms
- Council Tax Band : D

Looking for a modern and spacious apartment that's just a stone's throw away from London's bustling city centre? Look no further than this stunning two-bedroom, two-bathroom apartment in Crowder Street, E1.





## Directions

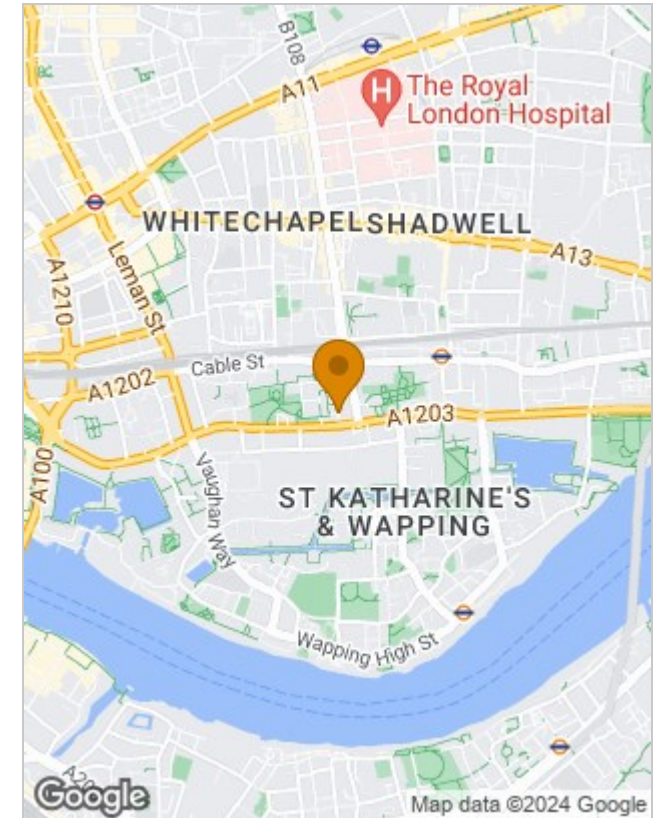




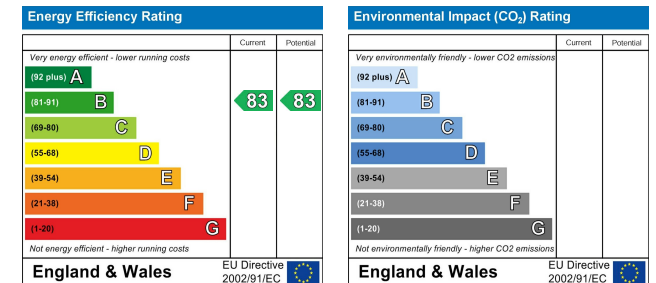
## Floor Plans



## Location Map



## Energy Performance Graph



## Viewing

Please contact our London Office on 020 7856 0368 if you wish to arrange a viewing appointment for this property or require further information.

The particulars are set out as a general outline only for the guidance of intended purchasers or lessees, and do not constitute, any part of a contract. Nothing in these particulars shall be deemed to be a statement that the property is in good structural condition or otherwise nor that any of the services, appliances, equipment or facilities are in good working order. Purchasers should satisfy themselves of this prior to purchasing.