



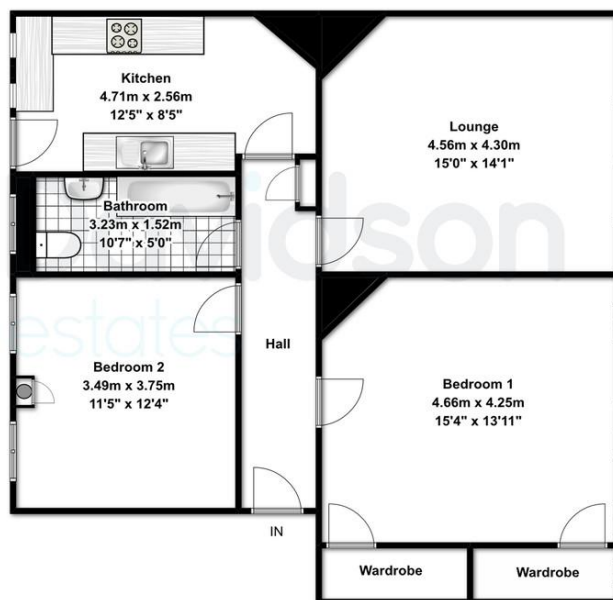
## STANLEY COURT, EDGBASTON, B15 1LD

£210,000  
LEASEHOLD

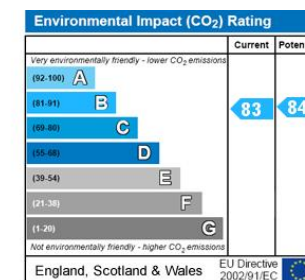
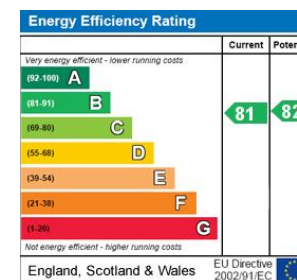
STANLEY COURT | Two Bedrooms | Refurbished | First Floor | Located on the Calthorpe Estate | Parking at rear | No Chain

Davidson

APPROXIMATE GROSS INTERNAL AREA: 904.6 SQ.F / 84 SQ.M



Floorplan measurements are for illustrative purpose only. Floor plan by www.sebastiano.co.uk.



# Davidson

OFFICE  
22 Harborne Road  
Birmingham  
West Midlands  
B15 3AA

0121 455 7727  
[info@davidsonestates.co.uk](mailto:info@davidsonestates.co.uk)  
[www.davidsonestates.co.uk](http://www.davidsonestates.co.uk)

Agents Note: Whilst every care has been taken to prepare these particulars, they are for guidance purposes only. All measurements are approximate and are for general guidance purposes only and whilst every care has been taken to ensure their accuracy, they should not be relied upon and potential buyers/tenants are advised to recheck the measurements