



## BROADWALK, UPPER WILLIAM STREET BIRMINGHAM, B1 2LL

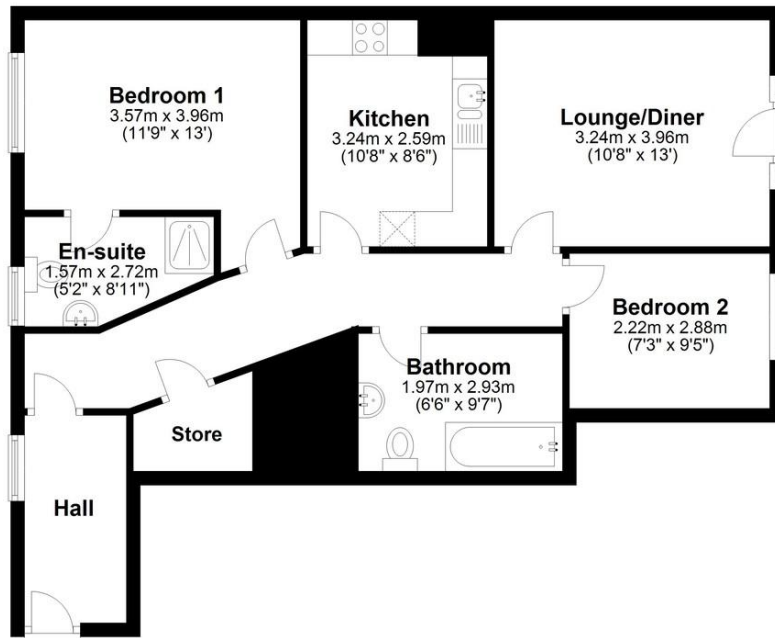
£160,000  
LEASEHOLD

A spacious and well-laid-out two-bedroom, two-bathroom apartment with allocated parking in a convenient Birmingham City Centre location. Ideal for professionals, first-time buyers, or investors seeking strong rental appeal and practical living space.

# Davidson

## Floor Plan

Approx. 69.7 sq. metres (749.9 sq. feet)



Total area: approx. 69.7 sq. metres (749.9 sq. feet)

This floor plan is not to scale and is for illustration/marketing purposes only.  
Plan produced using PlanUp.

## Energy Efficiency Rating

	Current	Potential
Very energy efficient - lower running costs		
(92 - 100) A		
(81 - 91) B		
(69 - 80) C	72	72
(55 - 68) D		
(39 - 54) E		
(21 - 38) F		

# Davidson

OFFICE

22 Harborne Road

Birmingham

West Midlands

B15 3AA

0121 455 7727

info@davidsonestates.co.uk

www.davidsonestates.co.uk

Agents Note: Whilst every care has been taken to prepare these particulars, they are for guidance purposes only. All measurements are approximate and are for general guidance purposes only and whilst every care has been taken to ensure their accuracy, they should not be relied upon and potential buyers/tenants are advised to recheck the measurements