

Davidson



PLATINUM APARTMENTS BIRMINGHAM, B18 6BT

£875 PCM

PLATINUM APARTMENTS | One Bed, One Bath Apartment | Secure Allocated Parking | Open Plan Living Area | Fully Fitted Kitchen | Furnished | Located in Jewellery Quarter | Available 31st January 2026
Council Tax Band: C EPC: B



PLATINUM APARTMENTS | One Bed, One Bath Apartment | Open Plan Living Area |

Fitted Kitchen | Fully Furnished

PLATINUM DEVELOPMENT

A bright and spacious, modern one-bedroom furnished apartment with secure parking, located in the sought-after Platinum Apartments on Branstons Street.

This apartment comprises a generous open-plan living area with large windows allowing plenty of natural light, a stylish fully fitted kitchen, an internal double bedroom with fitted wardrobes, and a modern bathroom featuring a shower over bath. The hallway includes an airing cupboard and additional space for coat storage.

Platinum Apartments benefit from a highly central location, within easy reach of St Paul's Square, the Jewellery Quarter, Five Ways, Broad Street, Brindleyplace, and the recently refurbished canal-side area, renowned for its restaurants and bars. Major bus routes are within a short walk, and Birmingham New Street Station is approximately a 15–20 minute walk away. A local supermarket is conveniently located within five minutes on foot.

Council Tax Band: C

EPC: B

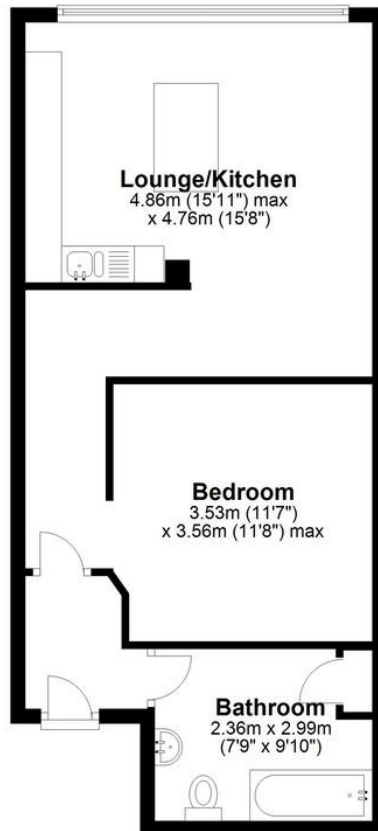


Secure Allocated Parking | Jewellery Quarter Location | Spacious Bathroom with
Shower Over Bath | Available 31st January 2026 |



Floor Plan

Approx. 49.4 sq. metres (531.6 sq. feet)



Total area: approx. 49.4 sq. metres (531.6 sq. feet)

This floor plan is not to scale and is for illustration/marketing purposes only.
Plan produced using PlanUp.

%epcGraph_c_1_317%

Davidson

OFFICE
22 Harborne Road
Birmingham
West Midlands

0121 455 7727
info@davidsonstates.co.uk
www.davidsonstates.co.uk

Agents Note: Whilst every care has been taken to prepare these particulars, they are for guidance purposes only. All measurements are approximate and are for general guidance purposes only and whilst every care has been taken to ensure their accuracy, they should not be relied upon and potential buyers/tenants are advised to recheck the measurements