

Davidson



91 BRANSTON STREET
BIRMINGHAM, B18 6BF

£795 PCM

NEW HAMPTON LOFTS | One Bed, One Bath | Furnished | Secure & Allocated
Parking | Located int the Jewellery Quarter | Available 27th January 2026

Council Tax Band: D
EP: B



NEW HAMPTON LOFTS | 1 Bed, 1 Bath Apartment | Spacious Open Plan Living Area |

Bathroom | Fully Fitted Kitchen

NEW HAMPTON LOFTS

This unique one-bedroom apartment is full of character and ideally located in Birmingham's historic Jewellery Quarter.

Just minutes from the renowned St Paul's Square, the

property is perfectly positioned to enjoy a wide selection of independent restaurants, fashionable bars and cafés.

The apartment features a raised bedroom area overlooking a spacious open-plan living and kitchen area, enhanced by exposed brickwork and large industrial-style windows that flood the space with natural light. A fully fitted bathroom completes the accommodation.

Offered furnished, the property also benefits from an allocated parking space, making it an excellent choice for professionals seeking stylish city living.

The apartment is within a 10-minute walk of Birmingham Snow Hill Station and the wider City Centre, providing excellent transport links and easy access to Birmingham's business and cultural districts.

Council Tax Band: D

EPC: B

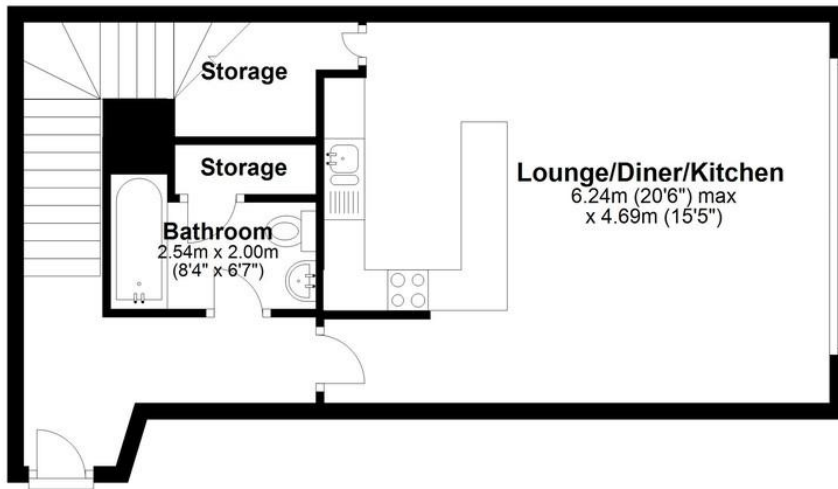


Great Jewellery Quarter Location | Secure Allocated Parking | Mezzanine Style |

Available 27th January 2026 |

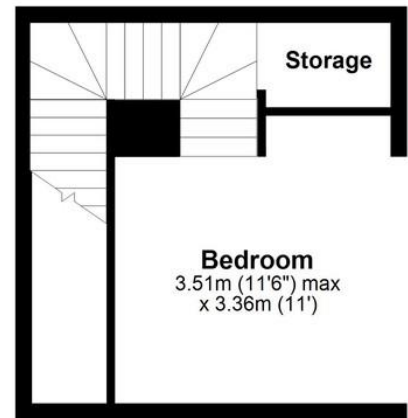
Ground Floor

Approx. 47.3 sq. metres (509.6 sq. feet)



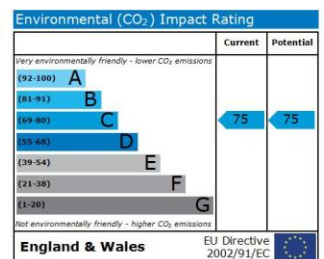
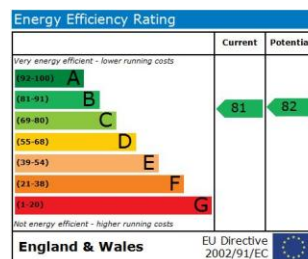
First Floor

Approx. 20.5 sq. metres (220.9 sq. feet)



Total area: approx. 67.9 sq. metres (730.5 sq. feet)

This floor plan is not to scale and is for illustration/marketing purposes only.
Plan produced using PlanUp.



Davidson

OFFICE
22 Harborne Road
Birmingham
West Midlands

0121 455 7727
info@davidsonstates.co.uk
www.davidsonstates.co.uk

Agents Note: Whilst every care has been taken to prepare these particulars, they are for guidance purposes only. All measurements are approximate and are for general guidance purposes only and whilst every care has been taken to ensure their accuracy, they should not be relied upon and potential buyers/tenants are advised to recheck the measurements