



## MORETON STREET BIRMINGHAM, B1

£950 PCM

MORETON HOUSE | One Bed 3rd Floor Apartment | Jewellery Quarter Location |  
Allocated Parking | Fully Furnished | Resident Amenities | Available 7th January  
2026

Council Tax Band: D EPC: B



# MORETON HOUSE | One Bedroom 3rd floor Apartment | Fitted kitchen | Fully Furnished | Jewellery Quarter location

## MORETON HOUSE

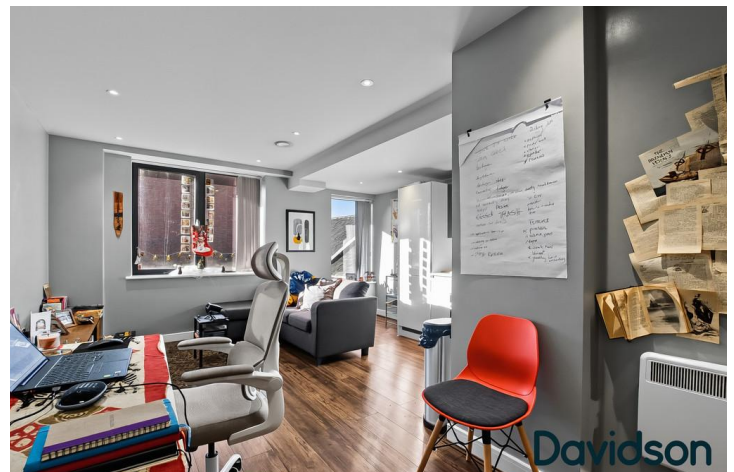
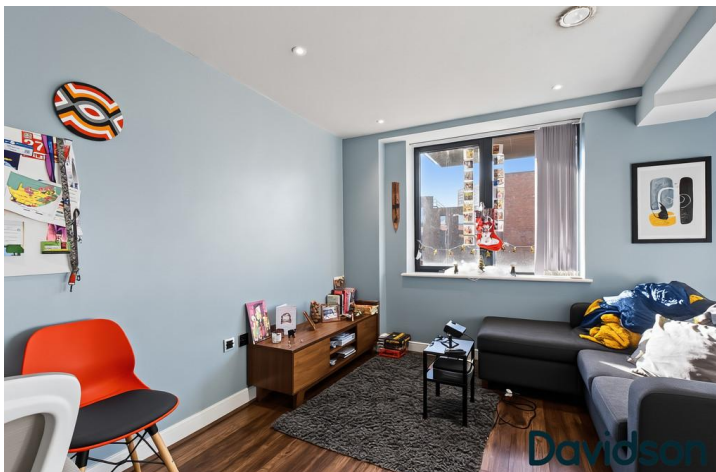
We are pleased to offer this modern one-bedroom apartment situated in the heart of the highly sought-after Jewellery Quarter. Located on the third floor of Moreton

House, this stylish home features a bright living area with an open-plan kitchen, a well-proportioned bedroom, and a contemporary bathroom. The property also benefits from a secure, allocated parking space-a rare and valuable feature in this central location.

### Area Highlights – Jewellery Quarter

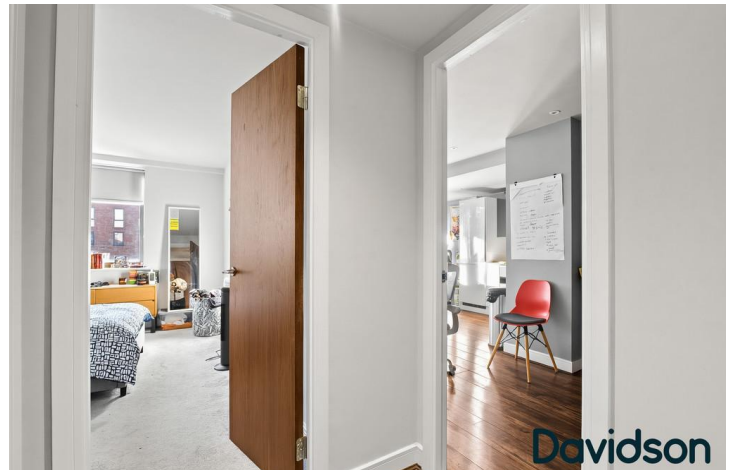
- Located in one of Birmingham's most historic and vibrant neighbourhoods
- Just moments from St Paul's Square, Warstone Lane, and boutique shops
- Short walk to Jewellery Quarter Train & Tram Station, offering excellent links to the City Centre and Snow Hill
- Surrounded by popular cafés, bars, restaurants, and independent businesses
- Easy access to the City Centre, Colmore Business District, and Brindleyplace

Available to Let | Council Tax Band: D | EPC: B



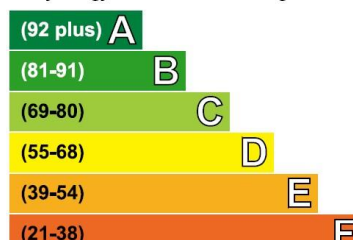
Allocated Parking | Double glazed | Concierge | Residents gym | Available 7th

January 2026



## Energy Efficiency Rating

Very energy efficient - lower running costs



Current	Potential
84	84

# Davidson

OFFICE  
22 Harborne Road  
Birmingham  
West Midlands

0121 455 7727  
info@davidsonstates.co.uk  
www.davidsonstates.co.uk

Agents Note: Whilst every care has been taken to prepare these particulars, they are for guidance purposes only. All measurements are approximate and are for general guidance purposes only and whilst every care has been taken to ensure their accuracy, they should not be relied upon and potential buyers/tenants are advised to recheck the measurements