



Davidson

Davidson estates

GRIFFIN GARDENS BIRMINGHAM, B17 0HU

£850 PCM

GRIFFIN GARDENS | One Bedroom | Top Floor | Allocated Parking Space Included
| Walking distance to Harborne High Street | Fully Furnished | Available
December 2025
Council Tax Band: A EPC: C



Davidson estates



Davidson estates

GRIFFIN GARDENS | 1 Bed, 1 Bath Apartment | Allocated Parking Space Included |

Stylishly Presented | Furnished

GRIFFIN GARDENS

A beautifully presented top-floor one-bedroom, one-bathroom apartment located in the popular Griffin Gardens development in Harborne. Bright, modern and stylish

throughout, this property offers comfortable living in a highly desirable area.

The apartment features a light and airy open-plan living space, a modern fitted kitchen, a well-sized double bedroom, and a contemporary bathroom. Offered fully furnished and an allocated parking space is also included.

Perfectly positioned in a peaceful residential setting, while still being within walking distance of excellent local amenities.

Key Features:

- Griffin Gardens Development
- 1 Bedroom, 1 Bathroom Apartment
- Allocated Parking Space Included
- Stylishly Presented Throughout
- Furnished
- Excellent Location Close to Harborne High Street
- Top Floor – Nice and Bright

-Walking Distance to University of Birmingham

Area Highlights: B17

-Close to Harborne High Street – offering independent cafés, restaurants, bars, boutique shops and supermarkets.

-Fantastic Transport Links – regular bus routes into Birmingham City Centre, Queen Elizabeth Hospital, Edgbaston and surrounding areas.

-Walking Distance to University of Birmingham – ideal for students or university staff.

-Near QE Hospital & Medical School – a popular area for healthcare professionals.

-Green Spaces Nearby – close to The Vale, Harborne Walkway and local parks for walking and leisure.

Council Tax Band: A

EPC: C

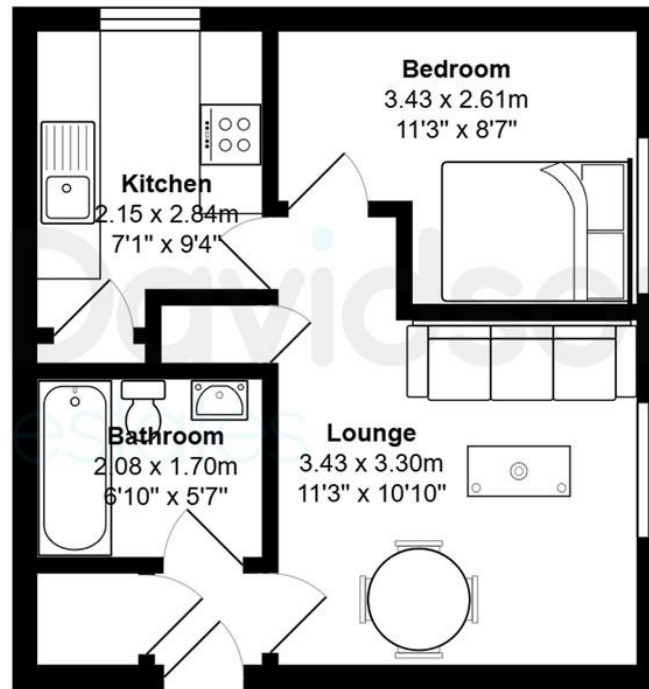
Contact Davidson Estates today to book a viewing.



Great Location to Harborne High Street | Top Floor, Nice and Bright | Walking

Distance to University of Birmingham | Available December 2025 |





Total Area: 34.9 m² ... 376 ft²

All measurements are approximate and for display purposes only

Floorplan measurements are for illustrative purpose only. Floor plan by www.sebastiano.co.uk.

%epcGraph_c_1_317%

Davidson

OFFICE
22 Harborne Road
Birmingham
West Midlands

0121 455 7727
info@davidsonstates.co.uk
www.davidsonstates.co.uk

Agents Note: Whilst every care has been taken to prepare these particulars, they are for guidance purposes only. All measurements are approximate and are for general guidance purposes only and whilst every care has been taken to ensure their accuracy, they should not be relied upon and potential buyers/tenants are advised to recheck the measurements