



ST JAMES PLACE

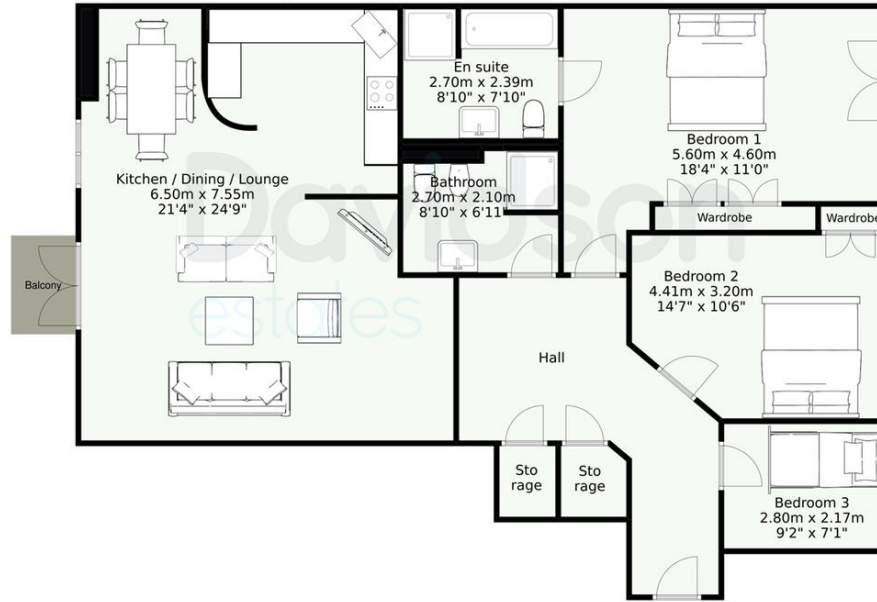
EDGBASTON, B15 1PQ

£2700 PCM

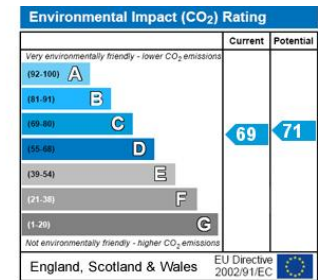
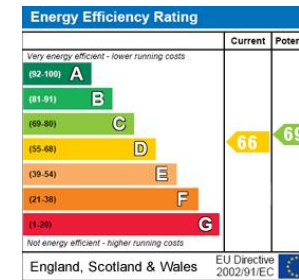
PENTHOUSE | Three Bedrooms | Two bathrooms | Residents GYM | Secure & Allocated Parking | Furnished | Balcony | Sauna | Solarium | Gated Development | Located on Calthorpe Estate | Walking distance to New Street Train Station | Easy Transport Links | Communal Gardens

Davidson

APPROXIMATE GROSS INTERNAL AREA: 1298.8 SQ.F / 120.7 SQ.M



Floorplan measurements are for illustrative purpose only. Floor plan by www.sebastiano.co.uk.



Davidson

OFFICE
102 Colmore Row

B3 3AG

0121 455 7727
info@davidsonstates.co.uk
www.davidsonstates.co.uk

Agents Note: Whilst every care has been taken to prepare these particulars, they are for guidance purposes only. All measurements are approximate and are for general guidance purposes only and whilst every care has been taken to ensure their accuracy, they should not be relied upon and potential buyers/tenants are advised to recheck the measurements