



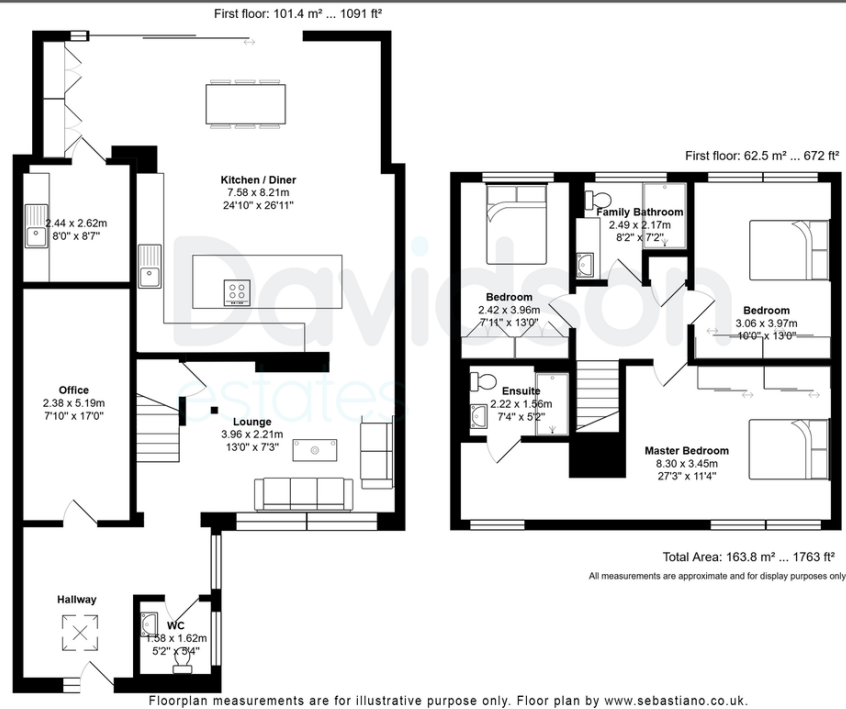
CHRISTCHURCH CLOSE

BIRMINGHAM, B15 3NE

£780,000
FREEHOLD

CHRISTCHURCH CLOSE | OPEN DAY THURSDAY 17TH APRIL 12-2PM - CALL TO REGISTER | Extended | Three Bedrooms | Two Bathrooms | Home office | Driveway Parking | No Chain

Davidson



Score	Energy rating	Current	Potential
92+	A		
81-91	B		
69-80	C		78 C
55-68	D	59 D	
39-54	E		
21-38	F		

Davidson

OFFICE
102 Colmore Row

B3 3AG

0121 455 7727
info@davidsonstates.co.uk
www.davidsonstates.co.uk

Agents Note: Whilst every care has been taken to prepare these particulars, they are for guidance purposes only. All measurements are approximate and are for general guidance purposes only and whilst every care has been taken to ensure their accuracy, they should not be relied upon and potential buyers/tenants are advised to recheck the measurements