

Davidson



- EWS1 SATISFACTORY
- No Chain
- South facing balcony
- Secure & Allocated Parking

Waterside Court, St. Vincent Street, Birmingham, B16 8EY

Guide Price £270,000

WATERSIDE COURT | Stunning Canal side Apartment | Two Bedrooms | Two Bathrooms | Furnished | Secure allocated parking space parking space | South facing balcony | EWS1 SATISFACTORY

Service Charge: £2,300.00 per annum

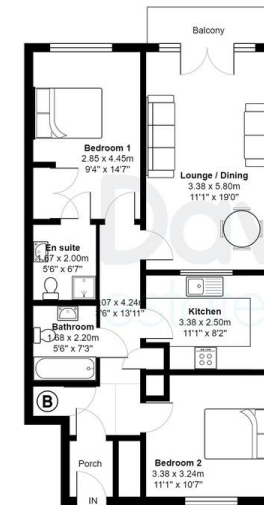
Ground Rent: £250.00 per annum

Years Remaining on Lease: 129



2x 2x

25 Waterside Court, 101 St Vincent Street, B16 8EY, Birmingham



Total Area: 73.7 m² ... 794 ft²



Floorplan measurements are for illustrative purpose only. Floor plan by www.sebastiano.co.uk.

Energy Efficiency Rating			
Score	Energy rating	Current	Potential
92+	A		
81-91	B	84 B	87 B
69-80	C		
55-68	D		
39-54	E		
21-38	F		

Unit 2 Liberty Place, 26-38
Sheepcote Street, Birmingham,
West Midlands, B16 8AE

www.davidsonstates.co.uk
0121 455 7727
info@davidsonstates.co.uk

Agents Note: Whilst every care has been taken to prepare these particulars, they are for guidance purposes only. All measurements are approximate and for general guidance purposes only and whilst every care has been taken to ensure their accuracy, they should not be relied upon and potential buyers/tenants are advised to recheck the measurements