

Davidson



- Beautiful duplex apartment
- Canal views
- Full length roof terrace
- 2 parking spaces

Edwards Wharf, 25 Sheepcote Street, Birmingham, B16 8FX

Asking Price Of £392,000

Beautiful duplex apartment with full length roof terrace overlooking the canal.

Impressive gallery room and 2 principle en-suite bedrooms.
24-hour concierge. Walking distance to Brindley Place!

Service Charge: £4,488.00 per annum

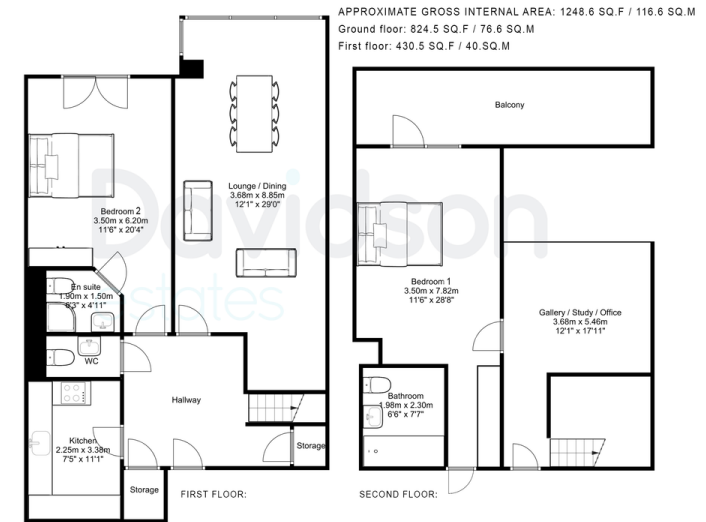
Ground Rent: £150.00 per annum

Years Remaining on Lease: 106



2x 3x 1x

King Edwards Wharf, 25 Sheepcote Street, Birmingham, B16 8FX



Floorplan measurements are for illustrative purpose only. Floor plan by www.sebastiano.co.uk.

Energy Efficiency Rating		Current	Potential
Very energy efficient - lower running costs			
(92-100)	A		
(81-91)	B		
(69-80)	C		
(55-68)	D		
(39-54)	E		
(21-38)	F		
(1-20)	G		
Not energy efficient - higher running costs			
England, Scotland & Wales		75	79
		EU Directive 2002/91/EC	

Environmental Impact (CO ₂) Rating		Current	Potential
Very environmentally friendly - lower CO ₂ emissions			
(92-100)	A		
(81-91)	B		
(69-80)	C		
(55-68)	D		
(39-54)	E		
(21-38)	F		
(1-20)	G		
Not environmentally friendly - higher CO ₂ emissions			
England, Scotland & Wales		74	78
		EU Directive 2002/91/EC	

14 Frederick Road, Edgbaston,
 Birmingham, West Midlands, B15
 1JD

www.davidsonstates.co.uk
 0121 455 7727
 info@davidsonstates.co.uk

Agents Note: Whilst every care has been taken to prepare these particulars, they are for guidance purposes only. All measurements are approximate and for general guidance purposes only and whilst every care has been taken to ensure their accuracy, they should not be relied upon and potential buyers/tenants are advised to recheck the measurements